



# Service Planning Area 8 Update

South Bay Cities Council of Governments  
Board of Directors Meeting

**Lindsey Lastra, MPH, MCHES**  
**Senior Public Health Analyst**



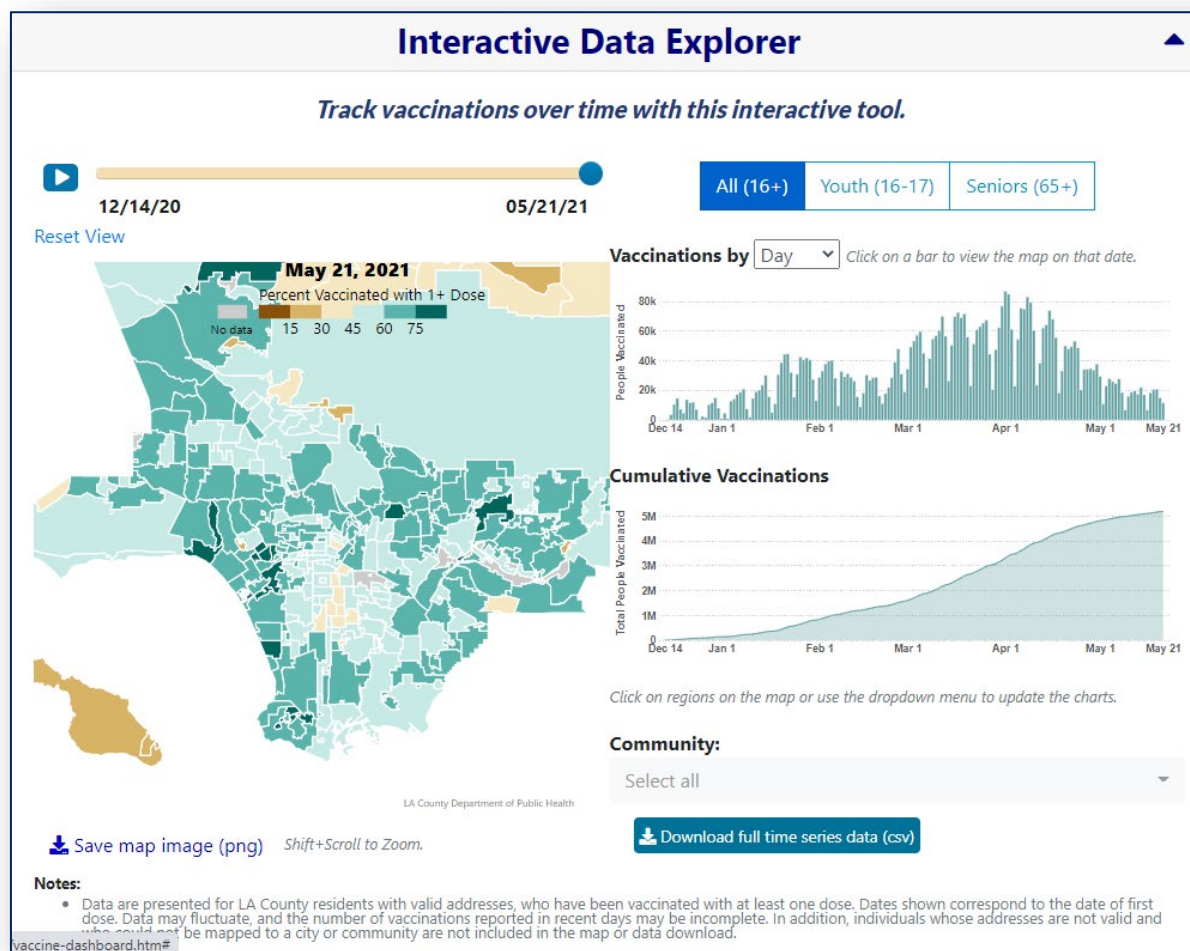


## LA County Reopening Plans

- LA County will align with the State's June 15 plans to ease capacity restrictions and distancing requirements
- Masking guidelines will also be updated to align with the CDC's recommendations for vaccinated and unvaccinated individuals
- The County will also follow the state on lifting current travel restrictions on June 15 to align with CDC travel recommendations
- Our County reopening protocols will be amended or retired on June 15 to reflect these changes



# COVID-19 Vaccination in SPA 8



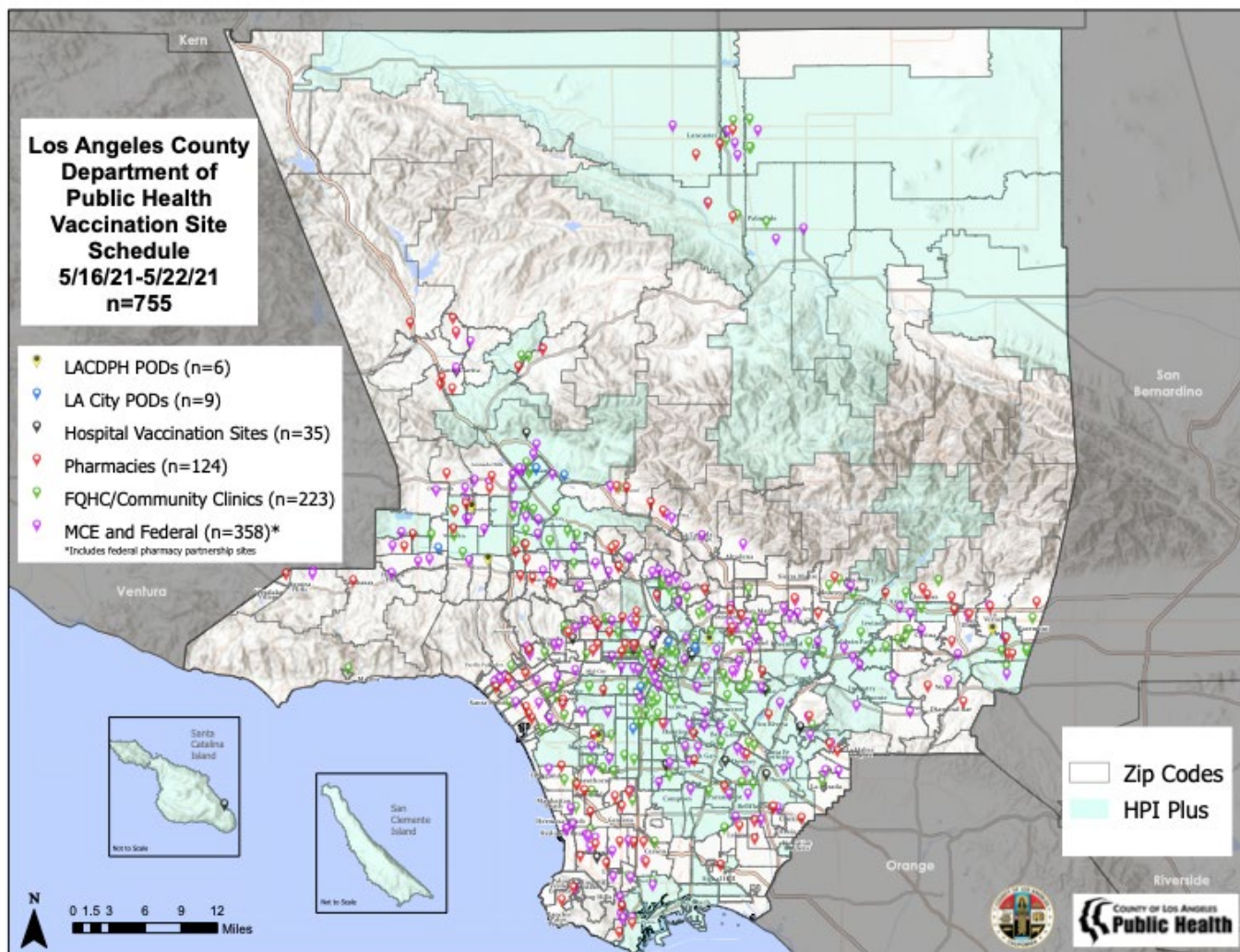


## COVID-19 Vaccination in SPA 8

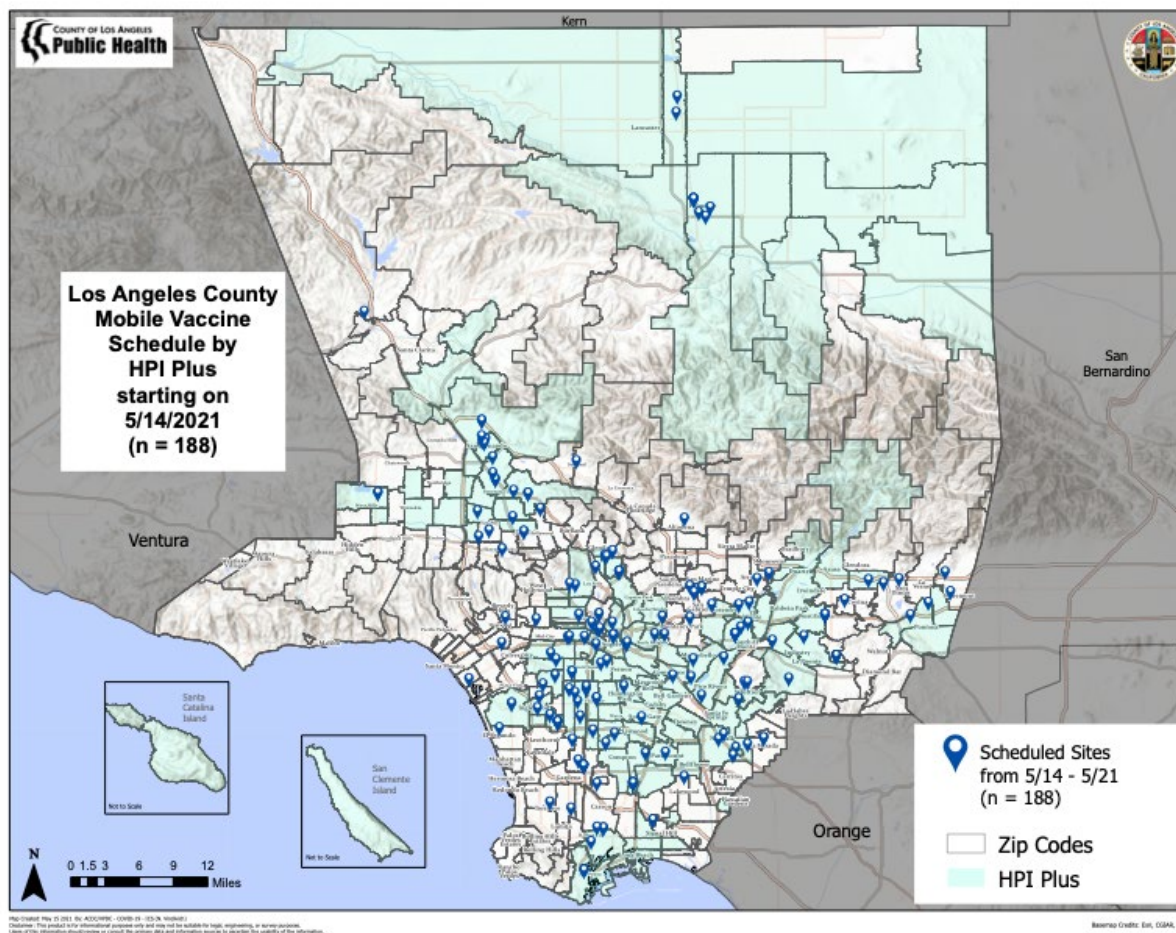
City	% Population Vaccinated
El Segundo	72%
Inglewood	53%
Lennox	54%
Westmont/West Athens	<b>44%</b>
Hawthorne	54%
Manhattan Beach	77%
Hermosa Beach	74%
Redondo Beach	73%
Lawndale	58%
Gardena	63%
Carson	65%

City	% Population Vaccinated
West Carson	69%
Lomita	61%
Torrance	71%
Palos Verdes Estates	71%
Rancho Palos Verdes	71%
Rolling Hills	64%
Rolling Hills Estates	77%
LA – Harbor Gateway	53%
LA – Harbor City	57%
LA - Wilmington	<b>49%</b>
LA – San Pedro	<b>52%</b>

# Vaccine Sites in LAC



# Mobile Vaccine Sites



To request a mobile vaccine site visit:

<http://ph.lacounty.gov/acd/ncorona2019/vaccine/providerfinder/>



# Mental Health Resources in SPA 8

## Service Area Leadership Teams (SALT)

- A part of the Stakeholder Engagement System in the Department of Mental Health functions as a local forum of consumers, families, service providers and community representatives
- The role of the SALT is to provide recommendations on:
  - The function of local service systems
  - Mental health service needs of their geographic area
  - Most effective/efficient use of available resources
  - Promote two-way communication between the DMH and various groups and geographic communities

**SPA 8 SALT meets the first Friday of each month**

Email [SALT8@dmh.lacounty.gov](mailto:SALT8@dmh.lacounty.gov) for meeting information



# Mental Health Resources in SPA 8

## Health Neighborhood

- Countywide initiative led by the Department of Mental Health to improve health equity through better coordinated care among clinical and community providers, enhance access to services, and community collaboration.
- Network of coalitions that brings together diverse stakeholders including personal, mental and public health providers, community-based agencies, social service providers, and community members to refine and improve clinical and community supports in designated neighborhoods throughout LA County

**Two Health Neighborhoods in SPA 8: Hawthorne-Lennox and Long Beach**

Email [KPhan@dmh.lacounty.gov](mailto:KPhan@dmh.lacounty.gov) for meeting information





## Future Collaboration with the SBCCOG

- Workgroup hosted by Beach Cities Health District to bring together DPH, South Bay Cities, SD4, SD2
- Workgroup will serve as a link to all other city meetings in the South Bay to improve communications about public health issues, coordinate efforts



# Questions?

Lindsey Lastra  
[lilastra@ph.lacounty.gov](mailto:lilastra@ph.lacounty.gov)

