

**SAFE
CLEAN
WATER
PROGRAM**




Water Resiliency Challenges

A circular inset image showing a concrete curb with a metal grate, with a white, foamy substance overflowing from the grate. The background is a dry, cracked landscape.

Pollution

A circular inset image showing a body of water with a red and yellow marker in the foreground. The water is dark and still, reflecting the sky. The background is a dry, cracked landscape.

Climate Change

A circular inset image showing a paved area with a concrete curb and a metal grate. The area is wet, with water reflecting the sky. The background is a dry, cracked landscape.

Fractured Jurisdiction

A circular inset image showing a dry, cracked landscape with a mountain range in the background. The sky is clear and blue.

Reliance on Imported Water

A circular inset image showing a large concrete dam with a body of water in the foreground. The dam is surrounded by trees and vegetation. The background is a dry, cracked landscape.

Limited Infrastructure



Regional Issue... Regional Approach

**CAPTURE
CLEAN
CONSERVE**

1

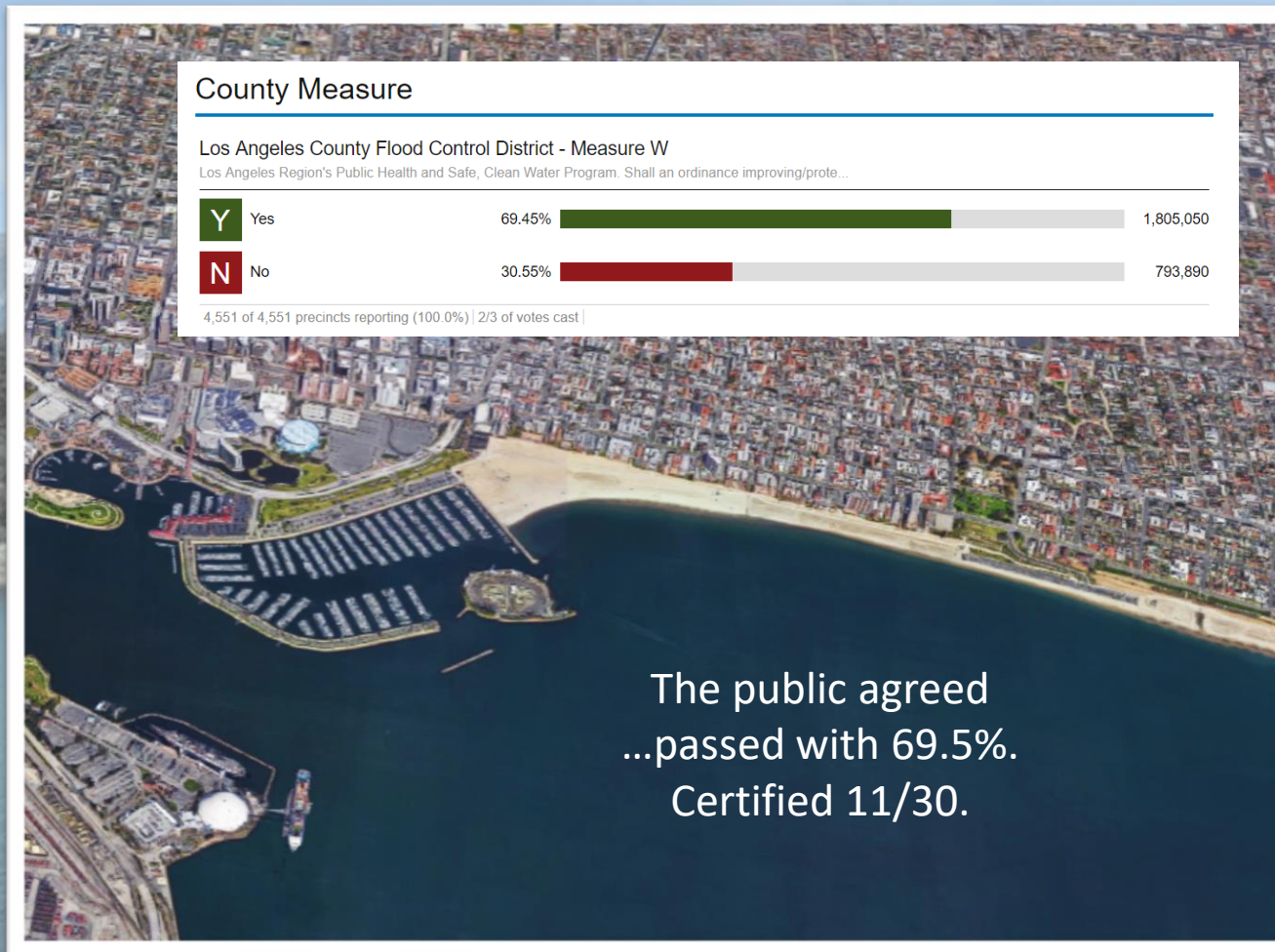
Improve Water Quality



2 Increase Local Water Supply

3

Enhance Communities

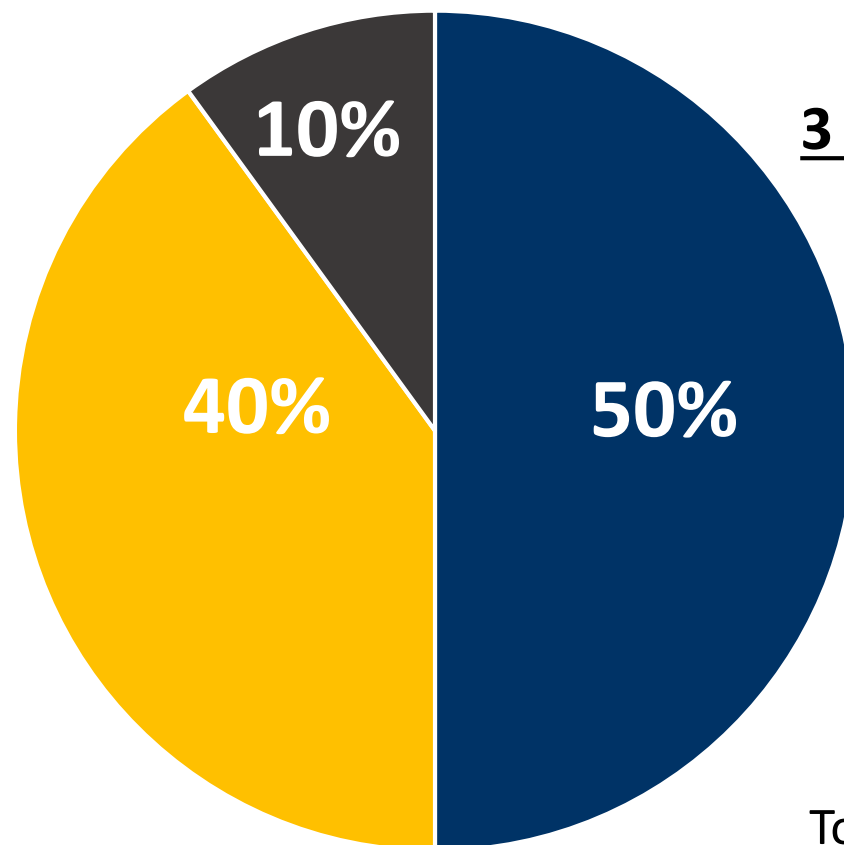




Safe, Clean Water Program Fund Allocation

Parcel tax

- 2.5 cents per square foot of impermeable area
- Watershed-based projects
- Local & Regional Projects



3 programs to be implemented:

- Regional Program
(50% = \$150M annually)
- Municipal Program
(40% = \$120M annually)
- FCD Program
(10% = \$30M annually)

Total Program: Approx. \$300M annually

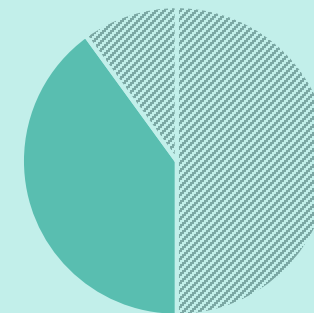


Safe, Clean Water Program & South Bay



50% of total revenue collected within each City goes to the Watershed Area (Regional Program)

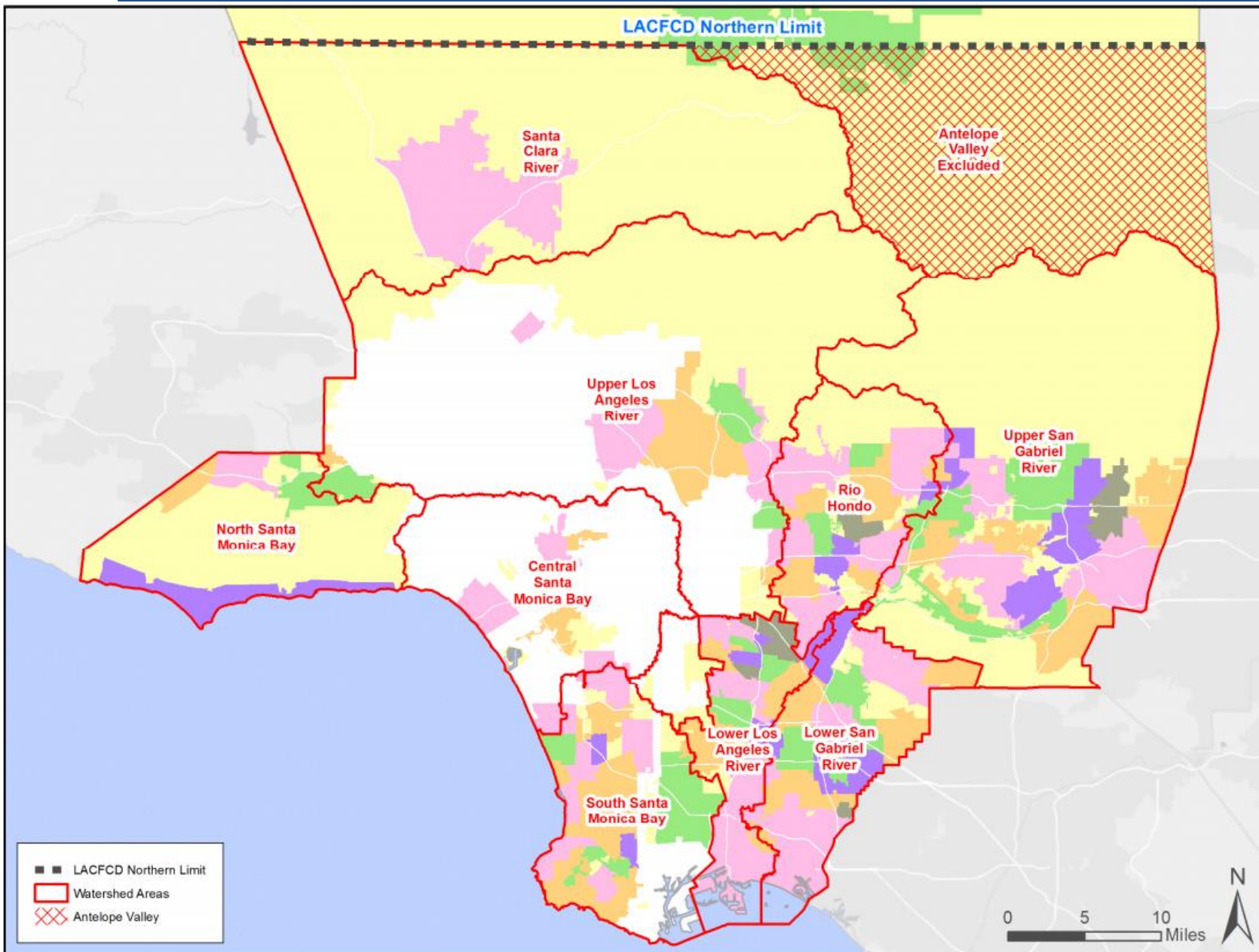
| WATERSHED AREA | PROJECTED ANNUAL RETURN |
|---------------------------------|-------------------------|
| Central Santa Monica Bay | \$18.1 Million |
| Lower Los Angeles River | \$13.9 Million |
| Lower San Gabriel River | \$17.4 Million |
| North Santa Monica Bay | \$2.2 Million |
| Rio Hondo | \$12 Million |
| Santa Clara River | \$7.1 Million |
| South Santa Monica Bay | \$19.5 Million |
| Upper Los Angeles River | \$39.9 Million |
| Upper San Gabriel River | \$20.1 Million |



40% of total revenue collected within each City goes back to the City (Municipal Program)



Watershed Areas





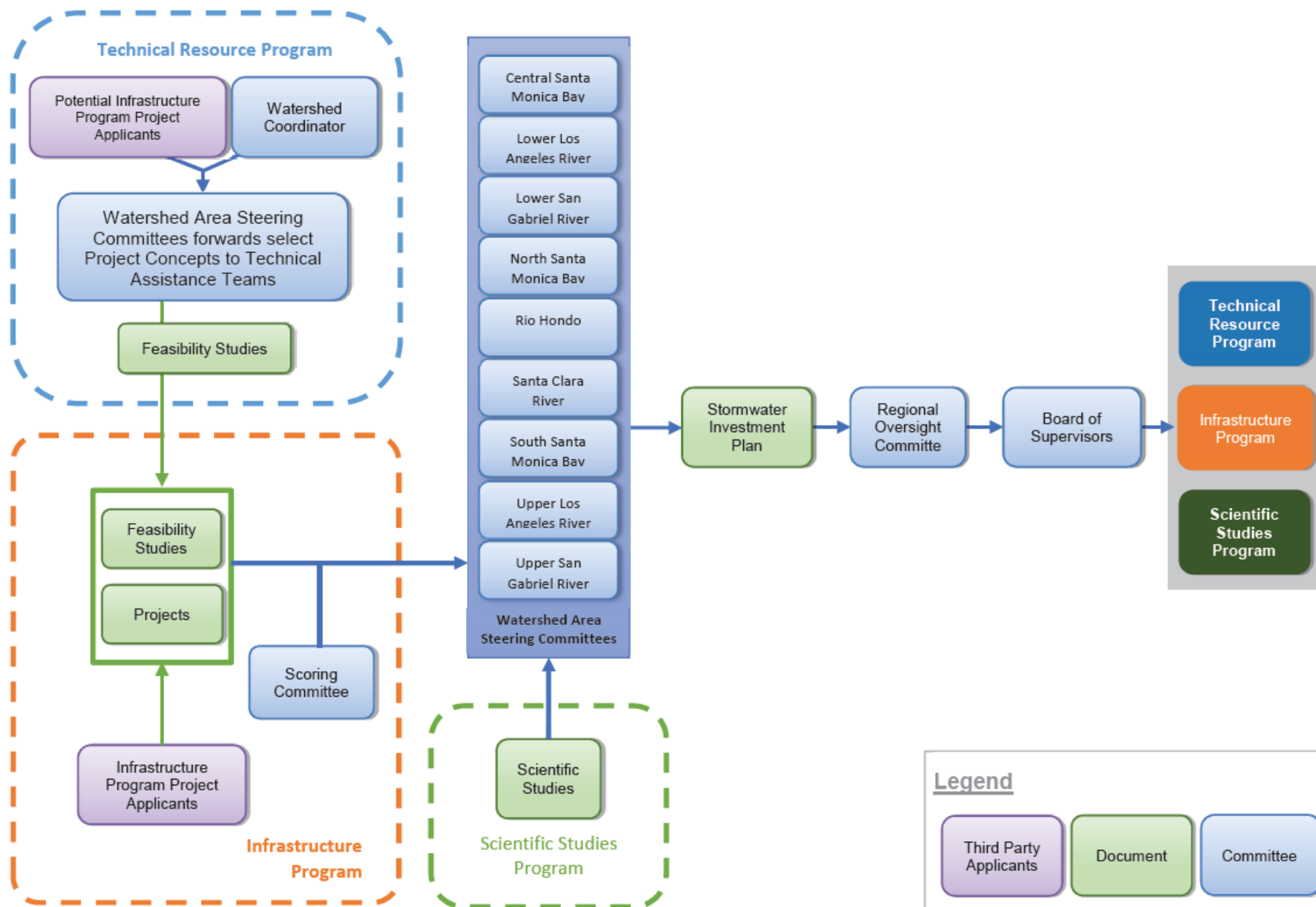
Regional Program-Watershed Area Steering Committee Membership

| WATERSHED AREA STEERING COMMITTEES | | | | | | | | | |
|---|--|---|---|---|---------------------------------------|--|------------------------------|---|-------------------------------------|
| | Central Santa Monica Bay | Lower Los Angeles River | Lower San Gabriel River | North Santa Monica Bay | Rio-Hondo | Santa Clara River | South Santa Monica Bay | Upper Los Angeles River | Upper San Gabriel River |
| Supervisory Districts within Watershed Area (with % of Tax/Impervious Area by SD) | 2nd (48%) 3rd (42%) 1st (5%) 4th (5%) | 1st (47%) 4th (33%) 2nd (20%) | 4th (95%) 1st (5%) | 3rd (100%) | 5th (60%) 1st (40%) | 5th (100%) | 4th (53%) 2nd (47%) | 3rd (49%) 5th (29%) 1st (14%) 2nd (9%) | 1st (63%) 5th (22%) 4th (15%) |
| Municipal Representation (Self-selecting process to occur in January/February 2019) | | | | | | | | | |
| Municipal Representation (7 seats) | Los Angeles (ALL) | 77% | 3 | | | | | | |
| | Santa Monica (3) | 6% | 1 | | | | | | |
| | El Segundo (4) | 4% | | | | | | | |
| | Culver City (2) | 4% | 1 | | | | | | |
| | Beverly Hills (3) | 4% | 1 | | | | | | |
| | Inglewood (2) | 2% | | | | | | | |
| | Unincorporated (ALL) | 2% | 1 | | | | | | |
| | West Hollywood (3) | 2% | | | | | | | |
| | Long Beach (4) | 22% | 1 | | | | | | |
| | Commercer (1) | 11% | 1 | | | | | | |
| | Compton (2) | 11% | | Long Beach (4) | 17% | 1 | | | |
| | Vernon (1) | 10% | 1 | Santa Fe Springs (4) | 11% | 1 | | | |
| | South Gate (1) | 9% | 1 | Whittier (4) | 9% | 1 | | | |
| | Downey (4) | 8% | 1 | Norwalk (4) | 8% | 1 | | | |
| | Lynwood (2) | 5% | 1 | Lakewood (4) | 8% | 1 | | | |
| Huntington Park (1) | 4% | | Unincorporated | 7% | | | | | |
| Paramount (4) | 4% | | Cerritos (4) | 7% | 1 | | | | |
| Unincorporated | 4% | | La Mirada (4) | 7% | | | | | |
| Bell Gardens (1) | 3% | | Downey (4) | 6% | 1 | | | | |
| Bell (1) | 3% | | Bellflower (4) | 6% | | | | | |
| Pico Rivera (1) | 2% | | Pico Rivera (1) | 5% | | | | | |
| Cudahy (1) | 2% | | Paramount (4) | 2% | | | | | |
| Maywood (1) | 2% | | Artesia (4) | 2% | | | | | |
| Signal Hill (4) | 1% | 1 | La Habra Heights (4) | 1% | | | | | |
| Carson (2) | 0% | | Signal Hill (4) | 1% | | | | | |
| Lakewood (4) | 0% | | Hawaiian Gardens (4) | 1% | | | | | |
| Pasadena (5) | 14% | 1 | | | | | | | |
| Unincorporated (ALL) | 11% | 1 | | | | | | | |
| Arcadia (5) | 10% | 1 | | | | | | | |
| Montebello (1) | 10% | | | | | | | | |
| El Monte (1) | 9% | | | | | | | | |
| Monterey Park (1) | 7% | 1 | | | | | | | |
| Rosemead (1) | 6% | | | | | | | | |
| Alhambra (5) | 6% | 1 | | | | | | | |
| Monrovia (5) | 6% | 1 | | | | | | | |
| San Gabriel (5) | 6% | | | | | | | | |
| Temple City (5) | 6% | | | | | | | | |
| South El Monte (1) | 4% | | | | | | | | |
| Malibu (3) | 25% | 1 | Unincorporated (ALL) | 29% | 2 | | | | |
| San Marino (5) | 3% | | | | | | | | |
| Agoura Hills (3) | 21% | 1 | | | | | | | |
| Westlake Village (3) | 14% | 1 | | | | | | | |
| Duarte (5) | 2% | | | | | | | | |
| Irwindale (1) | 1% | | | | | | | | |
| Bradbury (5) | 0% | | | | | | | | |
| South Pasadena (5) | 0% | | | | | | | | |
| Santa Clarita (5) | 84% | 4 | | | | | | | |
| Unincorporated (ALL) | 36% | 3 | | | | | | | |
| Los Angeles (ALL) | 19% | 1 | | | | | | | |
| Pomona (1) | 13% | 1 | | | | | | | |
| Industry (1) | 11% | 1 | | | | | | | |
| West Covina (1) | 9% | | | | | | | | |
| Glendora (5) | 8% | 1 | | | | | | | |
| Diamond Bar (4) | 8% | | | | | | | | |
| Covina (5) | 5% | | | | | | | | |
| Baldwin Park (1) | 5% | 1 | | | | | | | |
| Hawthorne (2) | 5% | 1 | Los Angeles (ALL) | 75% | 3 | | | | |
| Redondo Beach (4) | 5% | 1 | Unincorporated (ALL) | 8% | 1 | | | | |
| Inglewood | 5% | | Glendale (5) | 5% | 1 | | | | |
| Rancho Palos Verdes | 5% | | Burbank (5) | 5% | | | | | |
| Manhattan Beach (4) | 3% | 1 | La Canada Flintridge (5) | 1% | 1 | | | | |
| El Segundo (4) | 2% | | Pasadena (5) | 1% | 1 | | | | |
| Palos Verdes Estates | 2% | 1 | Calabasas (3) | 1% | | | | | |
| Lomita (4) | 2% | | Alhambra (5) | 1% | | | | | |
| Lawndale (2) | 1% | | San Fernando (3) | 1% | | | | | |
| Rolling Hills Estates | 1% | | South Pasadena (5) | 1% | | | | | |
| Hermosa Beach (4) | 1% | | Monterey Park (1) | 0% | | | | | |
| Rolling Hills (4) | 1% | | Hidden Hills (3) | 0% | | | | | |
| Compton (2) | 0% | | Santa Clarita (5) | 0% | | | | | |
| Unincorporated (ALL) | 0% | | Monrovia (5) | 0% | | | | | |
| LACFCO | FCD | FCD | FCD | FCD | FCD | FCD | FCD | FCD | FCD |
| Water Agency | LA-DWP | Central Basin | Central Basin | Las Virgenes | Upper San Gabriel District | Santa Clarita Valley Water Agency | West Basin | LA-DWP | Upper San Gabriel District |
| Ground Water / Water Agency 2 | West Basin | Water Replenishment District | Water Replenishment District | County-Waterworks District | Main San Gabriel Basin | GSA for the Santa Clara River Valley | Water Replenishment District | LA-DWP | Main San Gabriel Basin |
| Sanitation | LA-SAN | San Districts | San Districts | Las Virgenes | San Districts | San Districts | San Districts | LA-SAN | San Districts |
| Municipal Parks / Open Space | LA Rec & Parks | City of Long Beach Parks and Recreation | City of Long Beach Parks and Recreation | Mountains Recreation and Conservation Authority | City of Pasadena Parks and Recreation | City of Santa Clarita Parks and Recreation | LA Rec & Parks | LA Rec & Parks | County Parks and Rec |
| Business | Appointed by BoS | Appointed by BoS | Appointed by BoS | Appointed by BoS | Appointed by BoS | Appointed by BoS | Appointed by BoS | Appointed by BoS | Appointed by BoS |
| Environmental Justice | Appointed by BoS | Appointed by BoS | Appointed by BoS | Appointed by BoS | Appointed by BoS | Appointed by BoS | Appointed by BoS | Appointed by BoS | Appointed by BoS |
| Environment | Appointed by BoS | Appointed by BoS | Appointed by BoS | Appointed by BoS | Appointed by BoS | Appointed by BoS | Appointed by BoS | Appointed by BoS | Appointed by BoS |
| At Large | Appointed by BoS | Appointed by BoS | Appointed by BoS | Appointed by BoS | Appointed by BoS | Appointed by BoS | Appointed by BoS | Appointed by BoS | Appointed by BoS |
| At Large | Appointed by BoS | Appointed by BoS | Appointed by BoS | Appointed by BoS | Appointed by BoS | Appointed by BoS | Appointed by BoS | Appointed by BoS | Appointed by BoS |

Pre-determined Municipal membership seats determined by impermeable area in the Watershed area (100% Watershed land area ÷ 7 seats = ~14%)

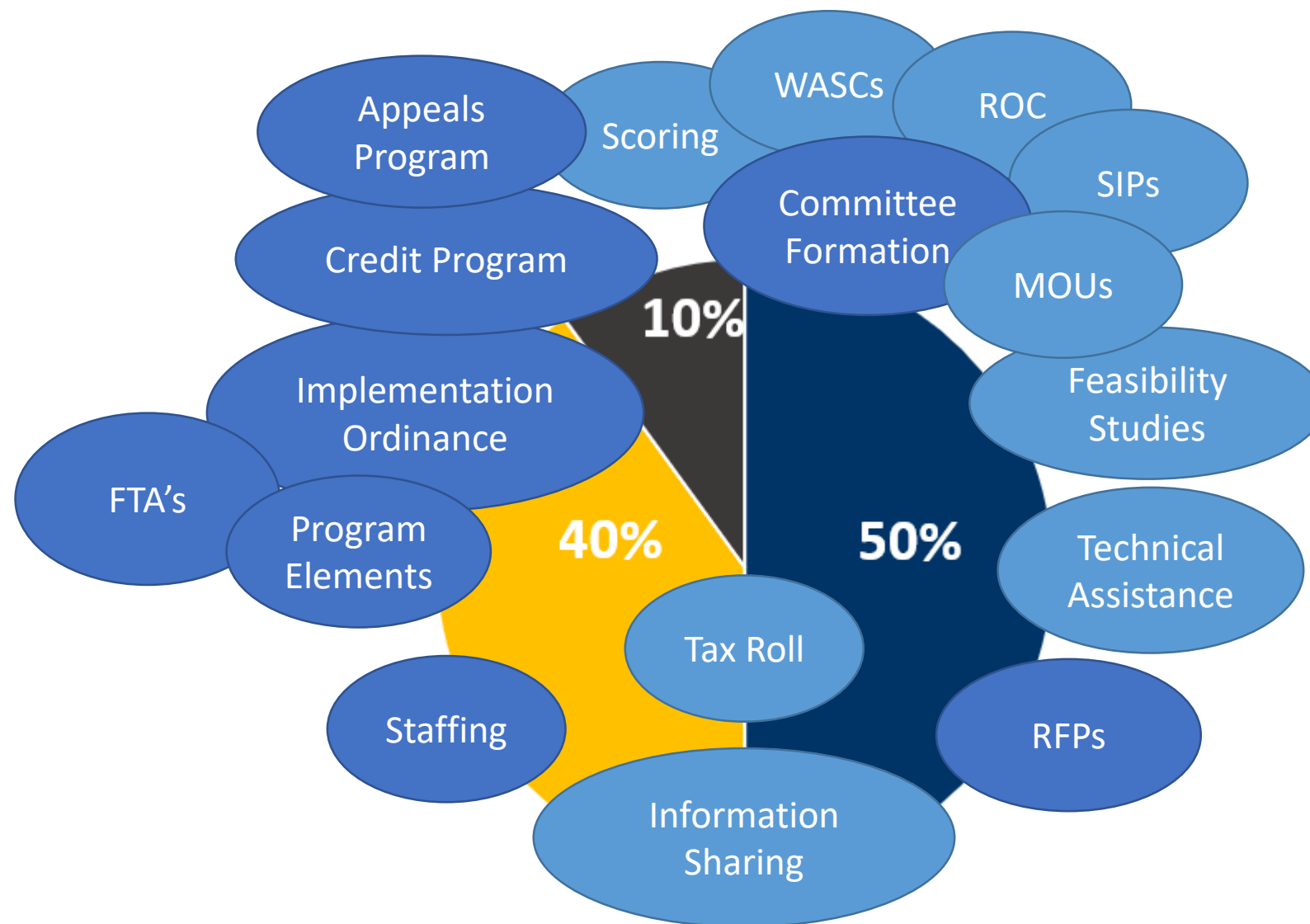
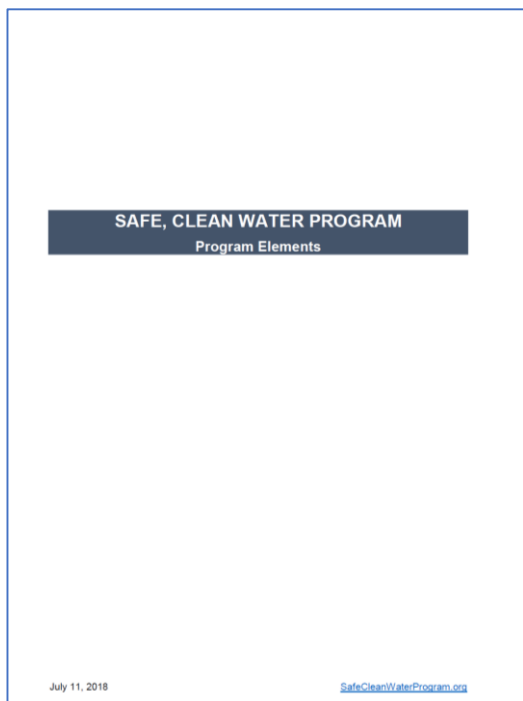


Regional Program Flow Chart



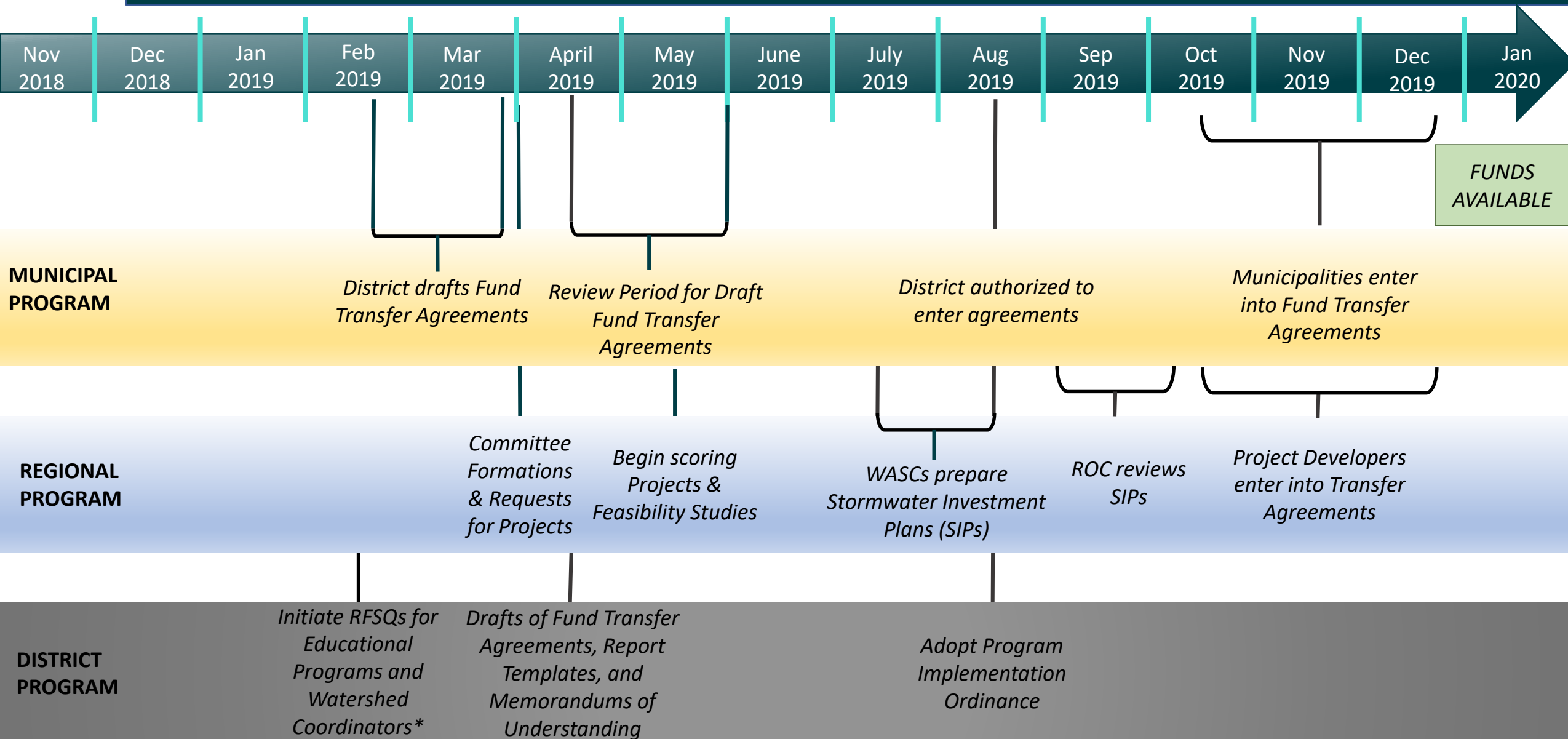


Safe, Clean Water Program Components





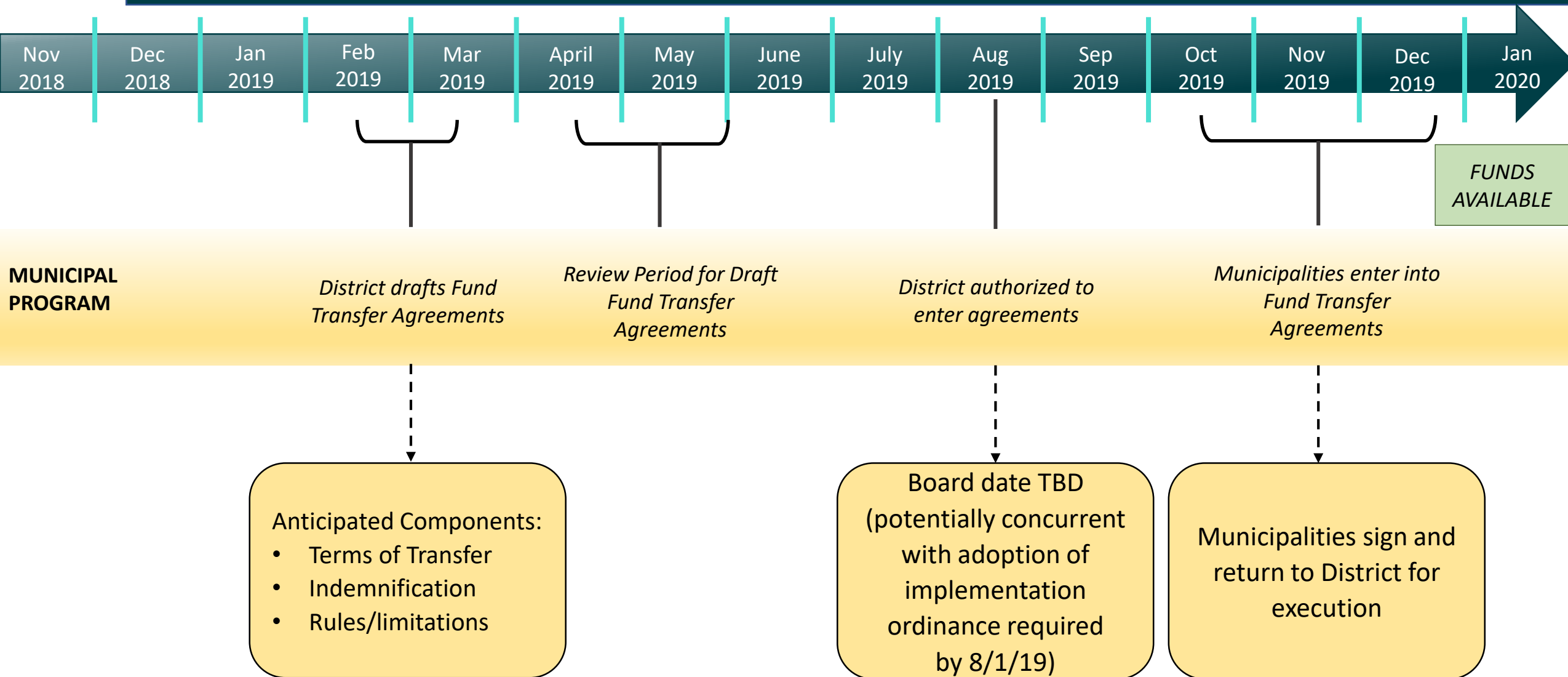
Anticipated Overall Timeline for Implementation



*Funded by Regional Program

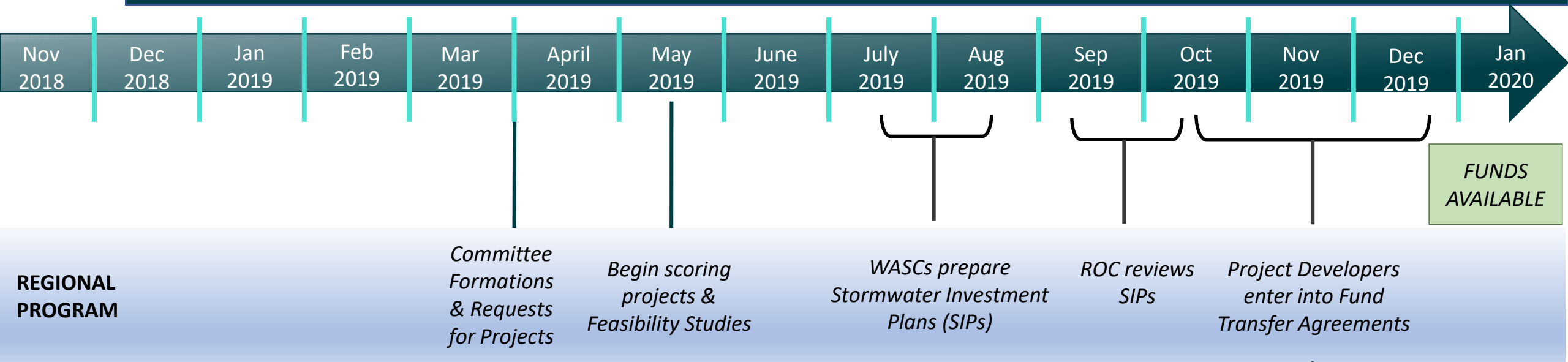


Anticipated Timeline for Implementation





Anticipated Timeline for Implementation



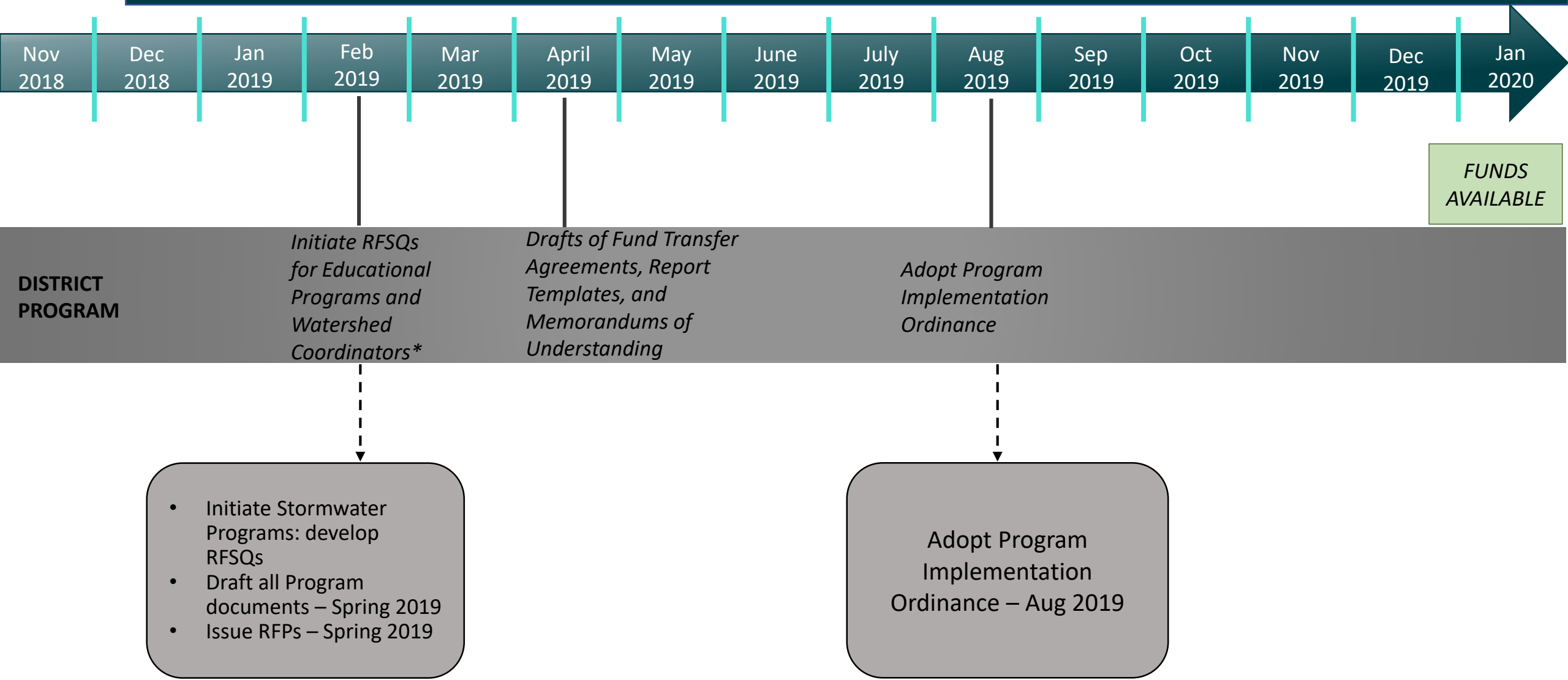
- Validate Municipal self-selection
- Seek Board appointments for WASC, Regional Oversight Committee, and Scoring Committee
- District to draft MOUs for committees, RFPs for Watershed Coordinators, and FTAs

- Commence WASC meetings Mar 2019
- Begin scoring projects & Feasibility Studies – May 2019
- Prepare Stormwater Investment Plans – Jul to Aug 2019

- Project Developers enter into Agreements with the District for Transfer of Funds – Winter 2019



Anticipated Timeline for Implementation



*Funded by Regional Program



Safe, Clean Water Program

Questions?

For additional information, please contact:

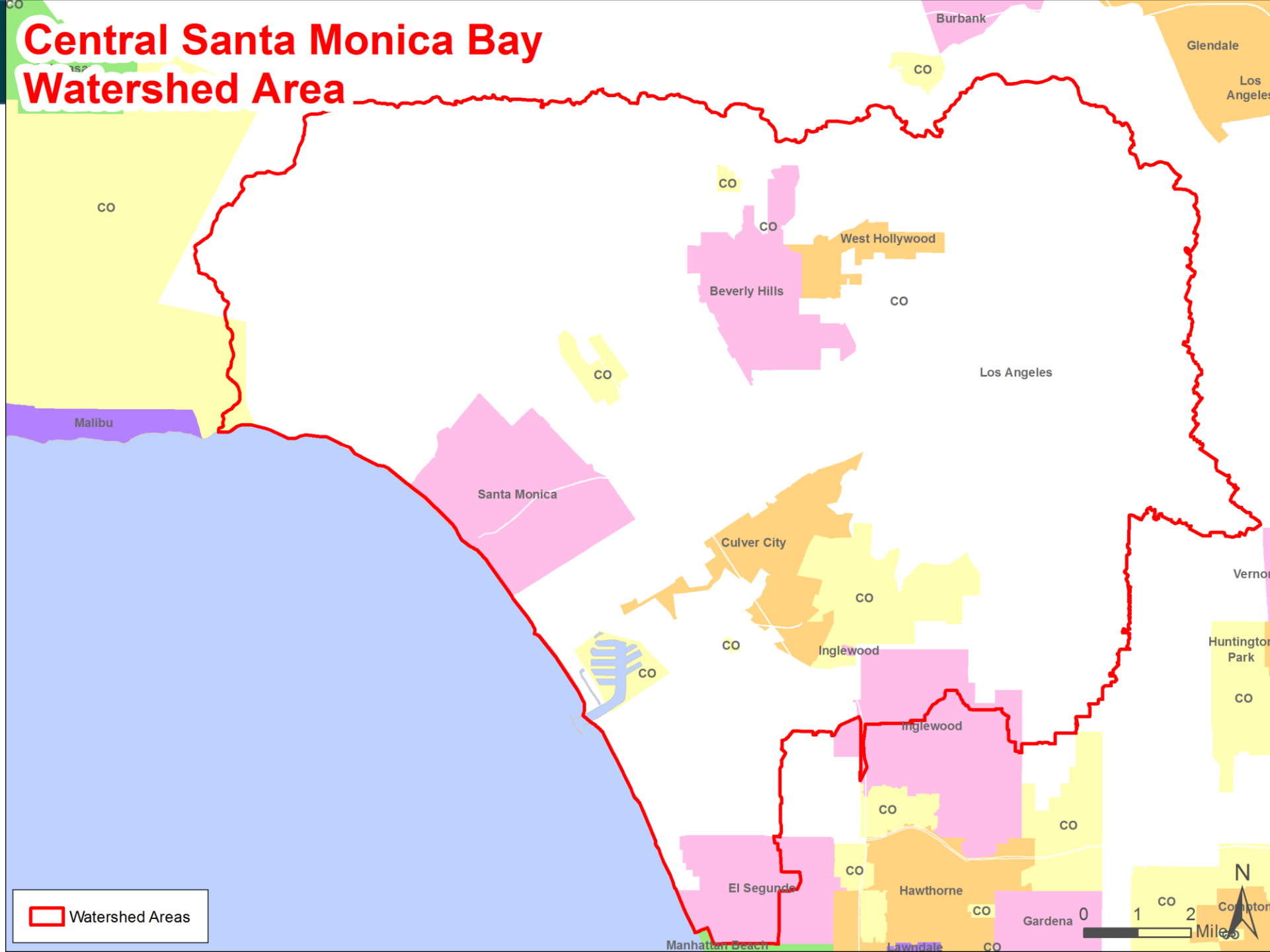
Melissa Turcotte

mturcotte@dpw.lacounty.gov

www safecleanwaterla.com



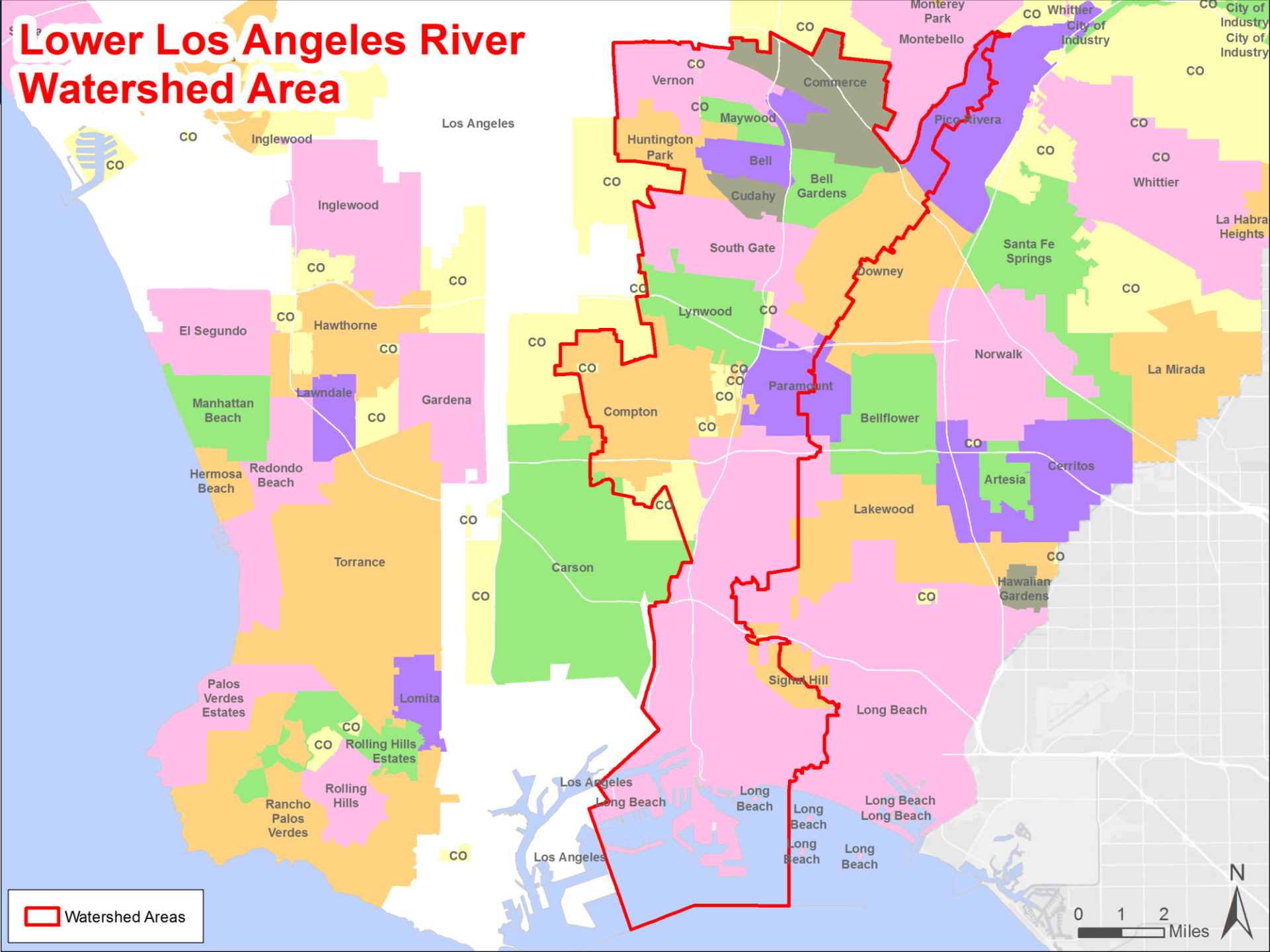
Central Santa Monica Bay Watershed Area



Watershed Areas



Lower Los Angeles River Watershed Area



Watershed Areas





Exemptions, Credits, and Appeals

Exemptions

- Government owned parcels
- Parcels already exempt from Ad Valorem taxes (including qualifying non-profits and other)
- Antelope Valley Watershed Area
- Low-income senior-owned parcels (*under development*)

Credits (*under development*)

- Tax reduction for qualifying stormwater improvements (SUSMP, IGP, LID, and equivalent)
- Up to 100% credit for qualifying additional activities

Appeals (*under development*)

- If parcel owners feel their tax is wrong, appeals will be available
- Web tool being developed to help expedite appeals process





Taxing Impermeable Area

LA County Landcover Survey



Identifies



VEGETATION



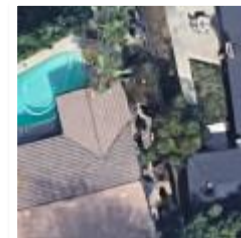
SOIL



STRUCTURES



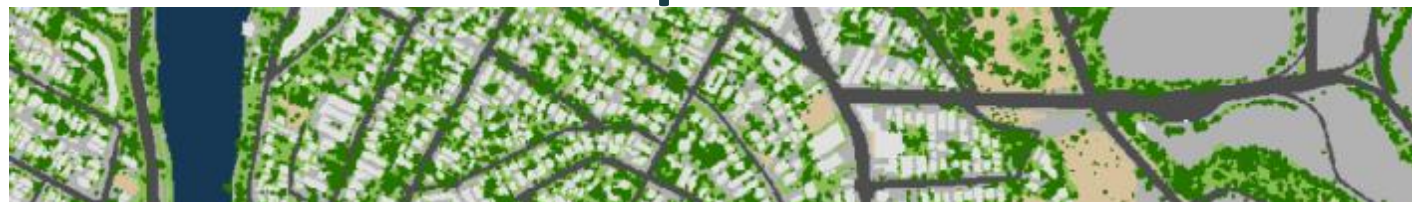
PAVEMENT



OTHER



Calculate Impermeable Area





Sample Projects

ELMER AVE GREEN STREET

BASSETT HIGH SCHOOL

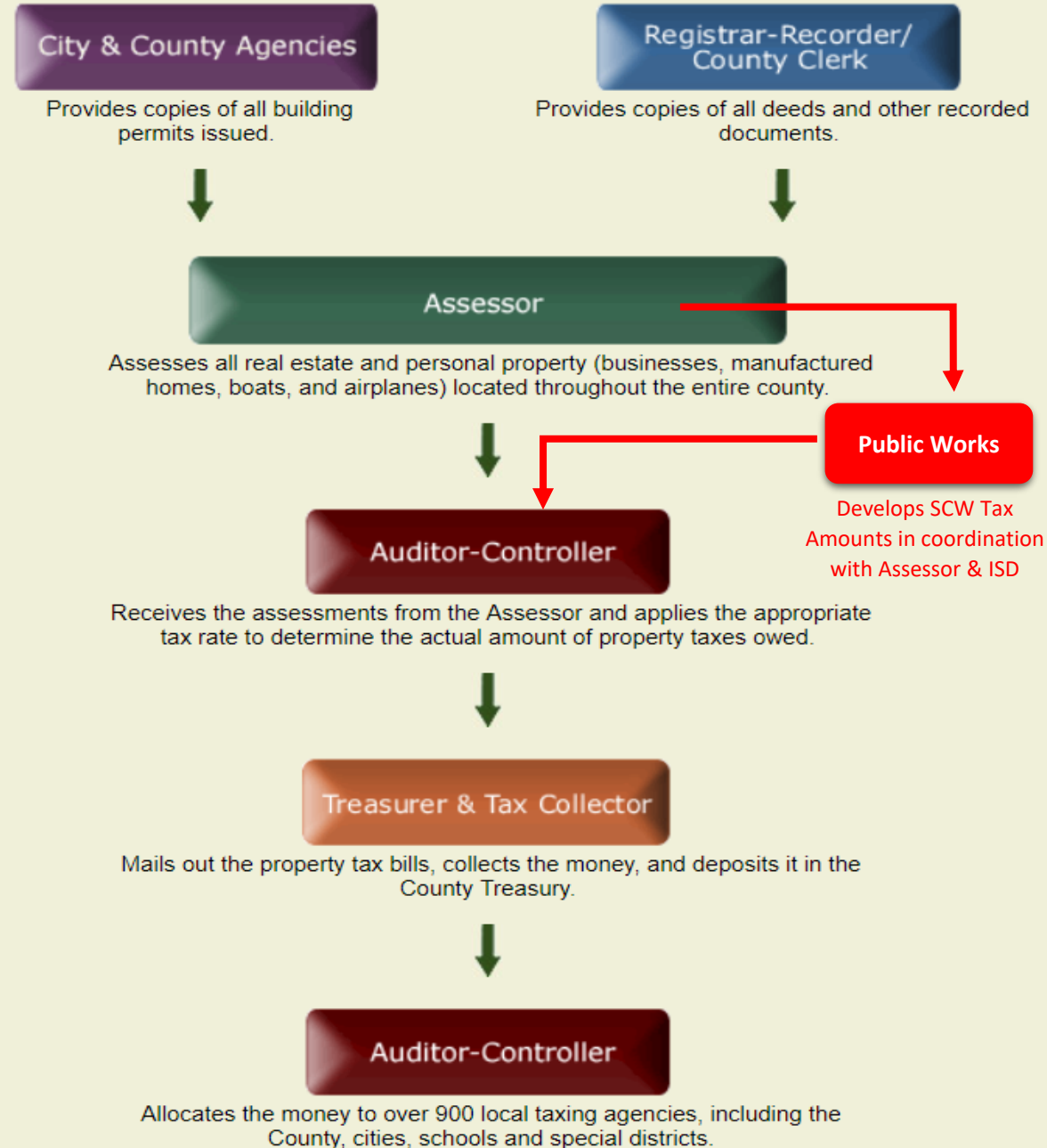
Los Angeles

DOMINGUEZ GAP WETLANDS

20



How the Property Tax System Works





Tax Timeline Flowchart

