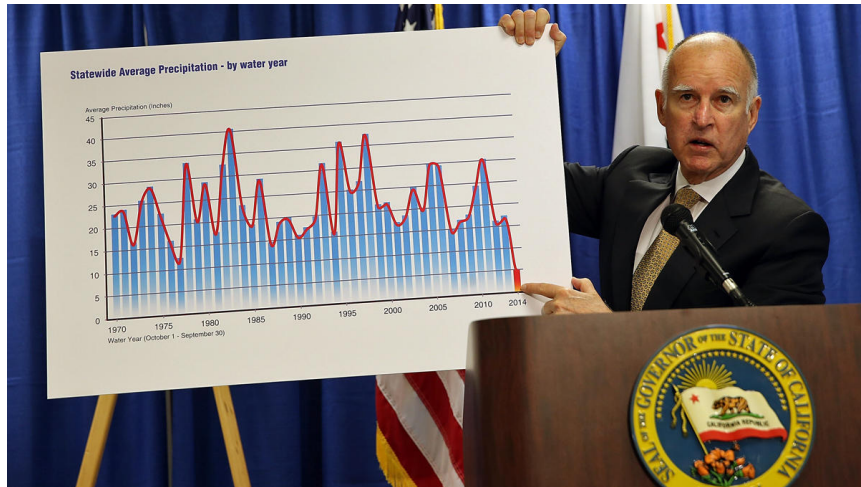


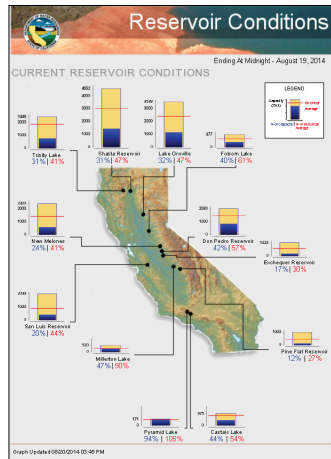
# South Bay Cities Council of Governments August 28<sup>th</sup>, 2014

Frances Spivy-Weber  
[frances.spivy-weber@waterboards.ca.gov](mailto:frances.spivy-weber@waterboards.ca.gov)  
310-874-5224

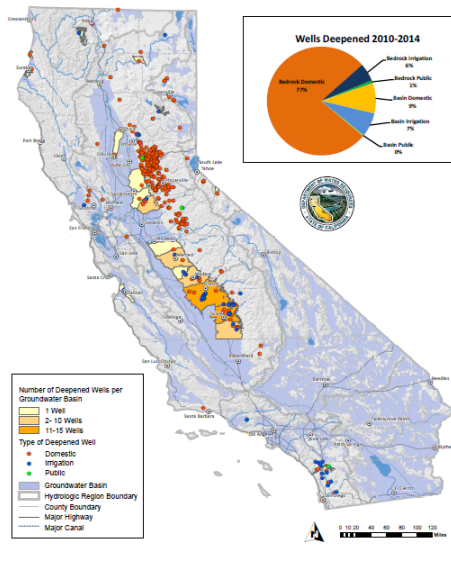
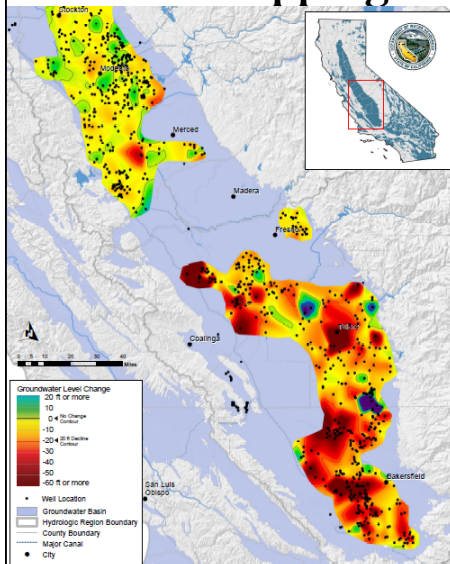
## 3<sup>rd</sup> Straight Year of Drought



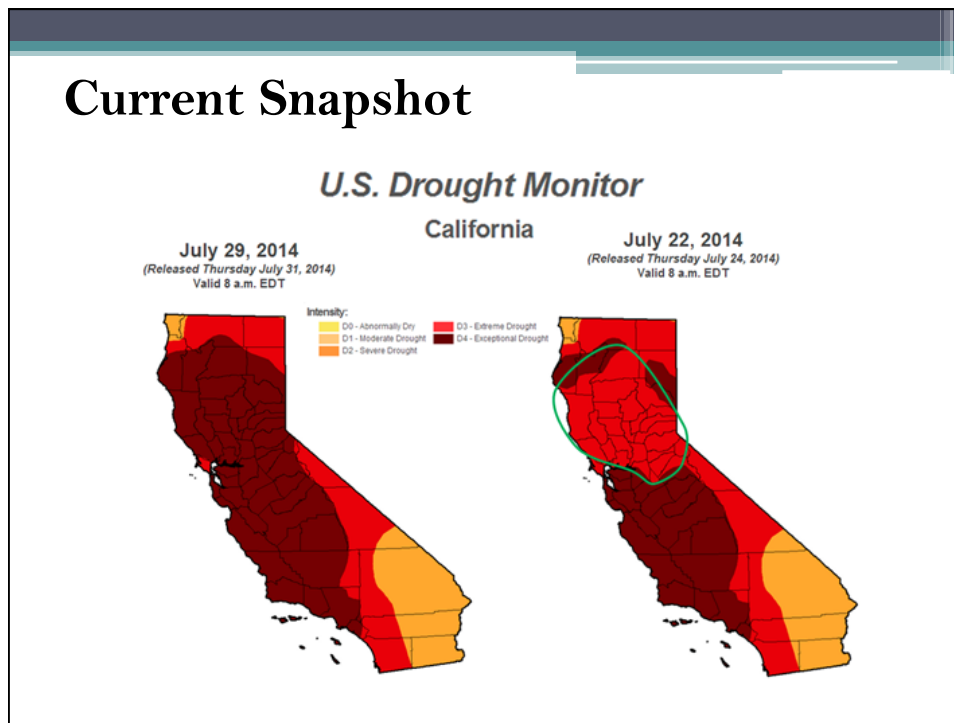
# Reservoir Conditions: Half of Normal



# Groundwater Levels Dropping



## Current Snapshot



## State Water Board Emergency Conservation Measures (7/29) and CPUC (8/14)

- Prohibitions on irrigation run-off, potable water use in decorative fountains and for washing vehicles without a hose cut off valve and washing sidewalks and driveways.
- Water Suppliers required to adopt mandatory water shortage plans and report monthly on water use.

## **Californians Must Conserve Water**

- **The Drought is likely to continue into 2015, regardless of El Nino.**
- **Visit [SaveOurWater.com](http://SaveOurWater.com) for ideas about how to conserve: landscape tips; reduced water use per person.**
- **Visit [drought.ca.gov](http://drought.ca.gov) for information on how California is dealing with the effects of the drought.**