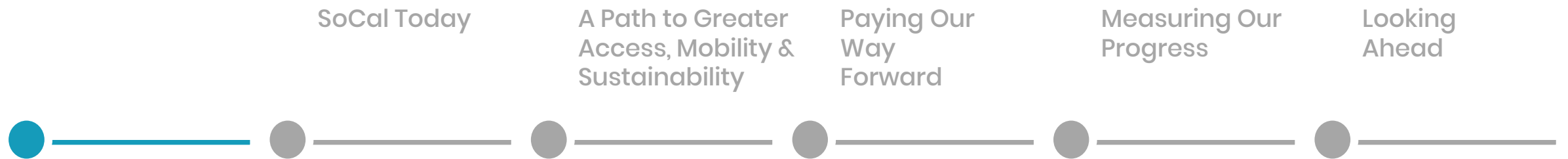


THE 2020-2045 REGIONAL TRANSPORTATION PLAN/
SUSTAINABLE COMMUNITIES STRATEGY OF THE
SOUTHERN CALIFORNIA ASSOCIATION OF GOVERNMENTS



About the Plan





Laws That Guide the Plan



DEVELOPING A REGIONAL TRANSPORTATION PLAN

Required by federal law to prepare and update a long-range transportation plan

KEEPING UP WITH CLEAN AIR ACT REQUIREMENTS

Meet federal transportation conformity requirements

MONITORING SYSTEM PERFORMANCE

Required by federal law to conduct transportation system performance planning/monitoring

DEVELOPING A SUSTAINABLE COMMUNITIES STRATEGY

State law requires the integration of land use and transportation strategies

HITTING SPECIFIC TARGETS FOR GREENHOUSE GAS EMISSIONS

California Air Resources Board sets emission reduction targets for the region



How We Got Here – Local Engagement



One-on-One Engagements
With Local Jurisdictions and
County Transportation
Commissions



Regional Planning Working
Groups and Community Based
Organizations



Public Workshops, Street
Teams, Tele-Town Hall,
Advertisements and Survey

Planning Process



Fall 2017 to
Spring 2019

Update Data
(through 2045, the new horizon year)

Summer
2019

Transportation Financial Analysis

Issues Exploration

Update Planning Assumptions

Land Use/Transportation Scenarios
Development

Fall
2019

Compile/Analyze Draft Connect SoCal

Develop Program Environmental Impact
Report (PEIR)

Winter
2019–2020

Release Draft Connect SoCal & PEIR

Public Outreach & Comment Period

April
2020

Approve Draft Connect SoCal & PEIR





SoCal Today

About the Plan

A Path to Greater
Access, Mobility &
Sustainability

Paying Our
Way
Forward

Measuring Our
Progress

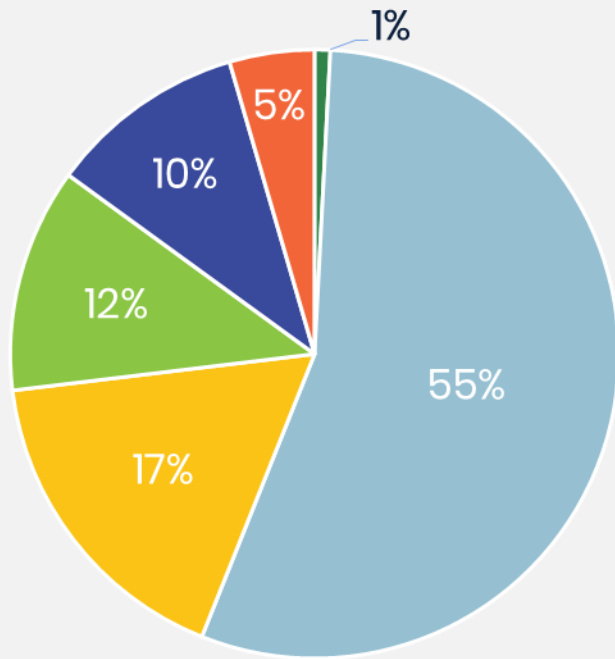
Looking
Ahead



Where We Live

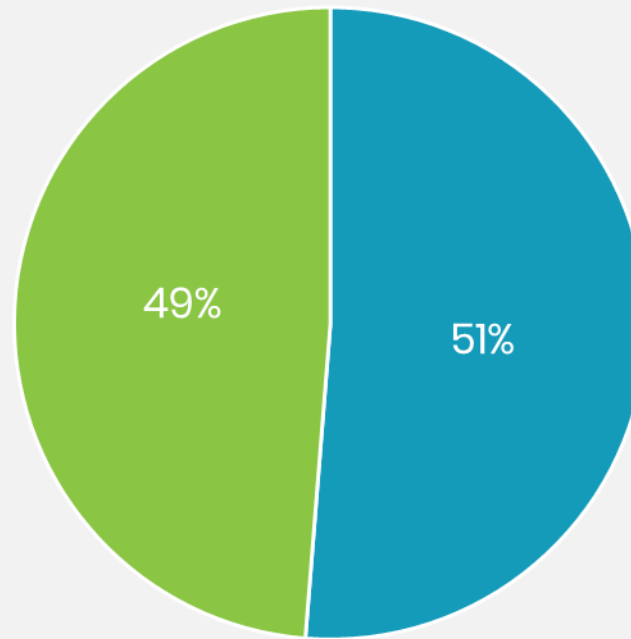


Households by County, 2016



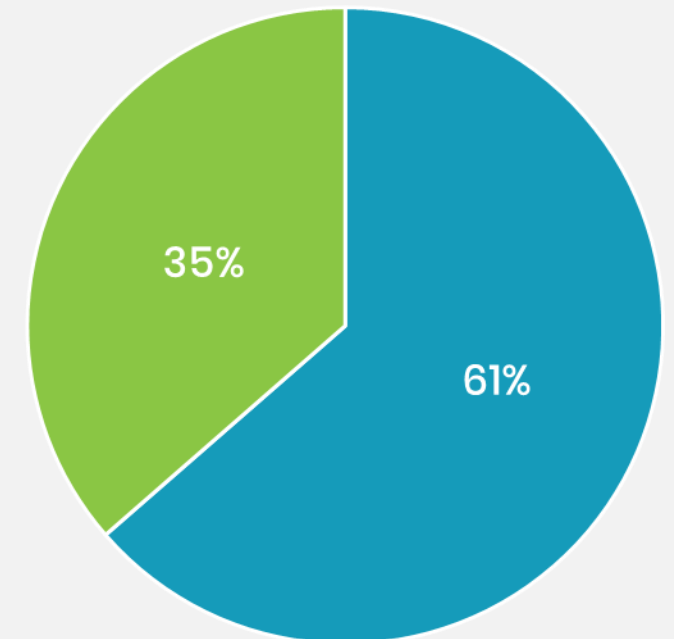
- Imperial
- Los Angeles
- Orange
- Riverside
- San Bernardino
- Ventura

Housing Tenure in SCAG Region, 2016



- Owner
- Renter

Housing by Type in SCAG Region, 2016

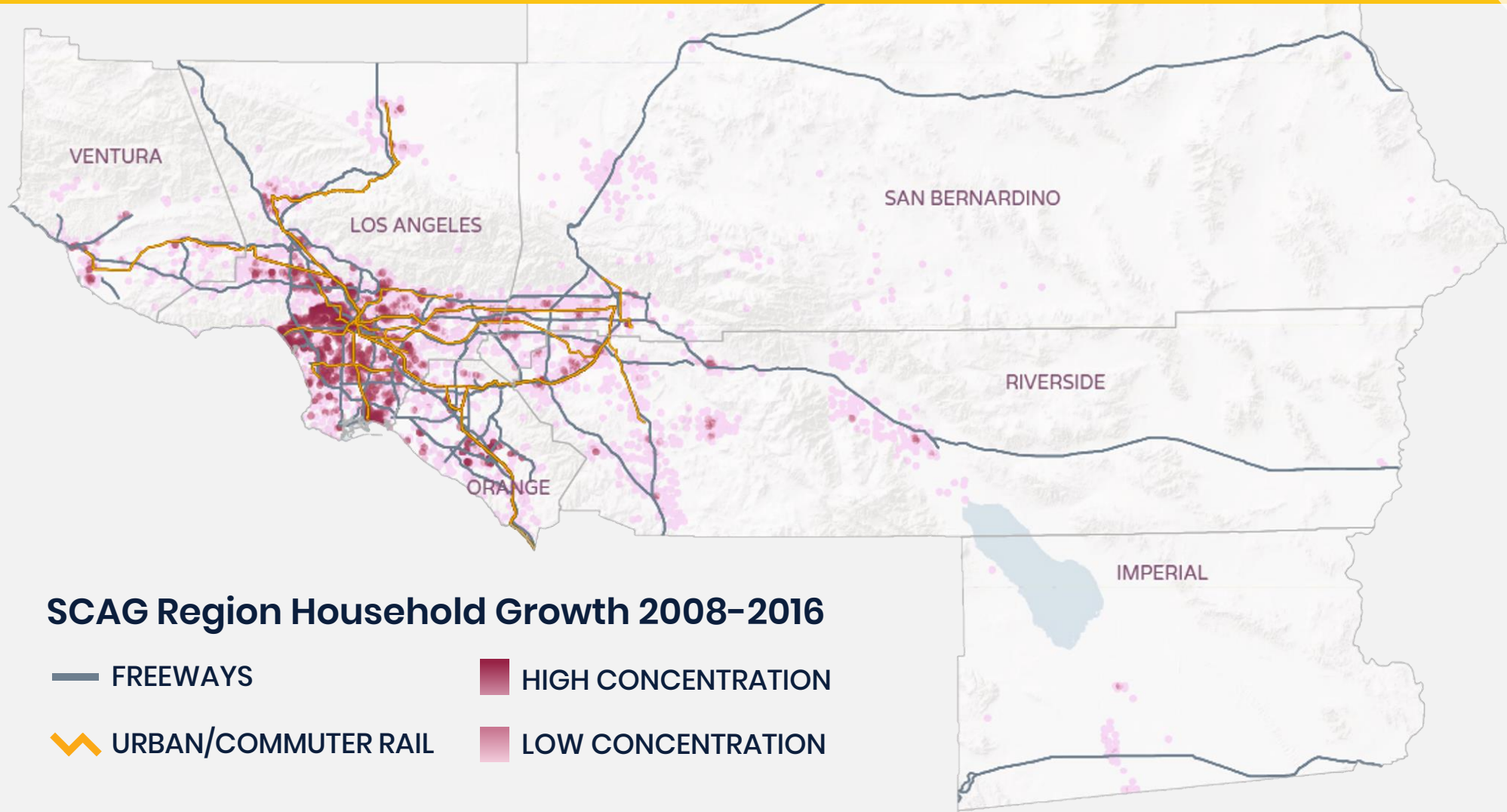


- Single-Family
- Multi-Family

57% of renters are paying more than 30 percent of their income on housing



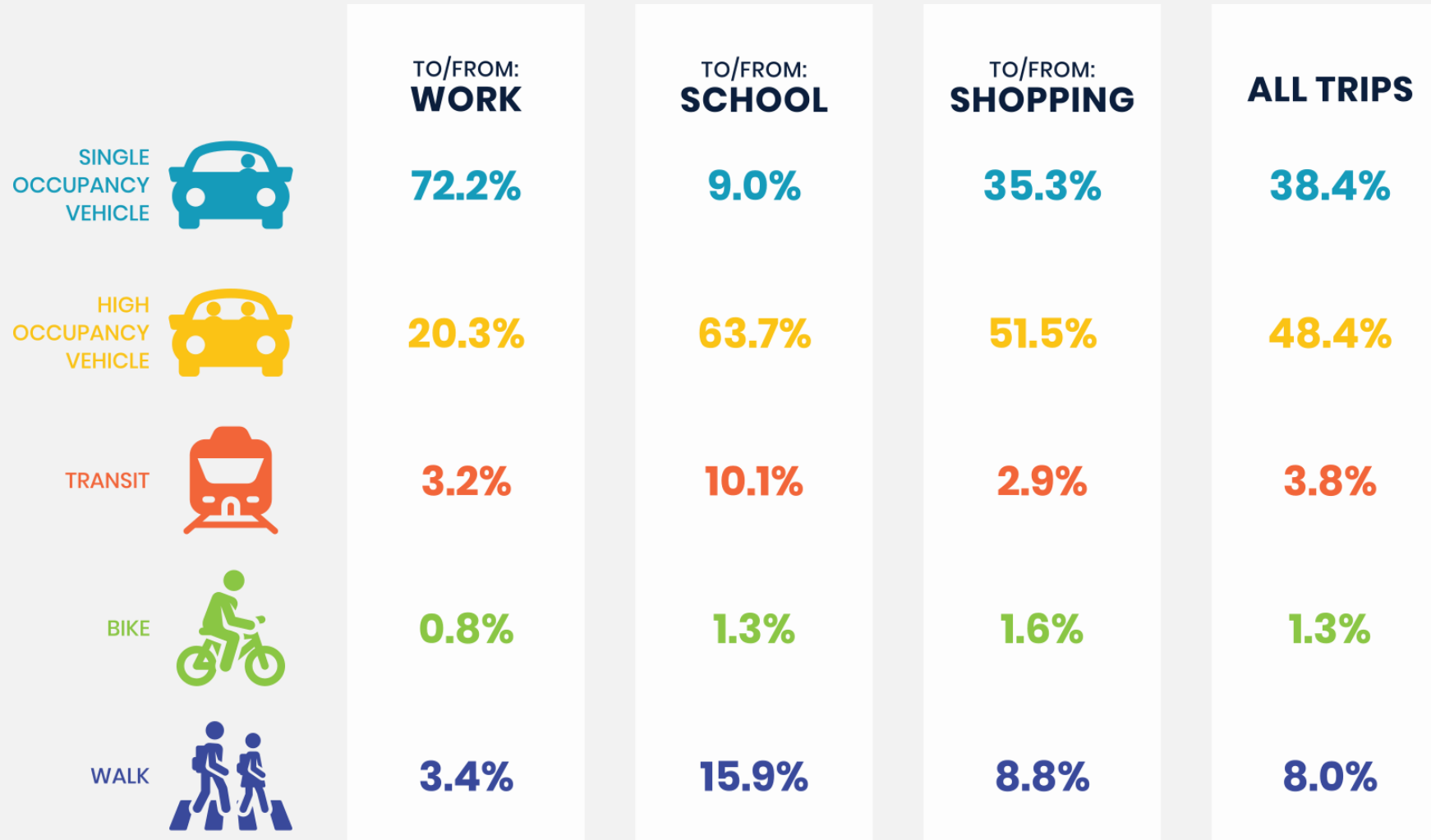
Where We Have Grown



SCAG Region Household Growth 2008-2016

- FREEWAYS
- URBAN/COMMUTER RAIL
- HIGH CONCENTRATION
- LOW CONCENTRATION

How We Travel Today



Source: SCAG Activity Based Model



Our Challenges



100
HOURS **STUCK IN TRAFFIC**



\$21.4B
ANNUAL COST OF **TREATING CHRONIC DISEASE**



~15%
OF BRIDGES ON THE NHS
ARE IN **POOR CONDITION**



1,500
ANNUAL **TRAFFIC FATALITIES**



21%
FARMLANDS **LOST SINCE 1984**



78%
OF THE POPULATION LIVING IN **FLOOD HAZARD AREAS** ARE MINORITIES

Planning for 2045 – Growth Forecast



JOBS



HOUSEHOLDS



POPULATION

2015

8.4M

6M

18.9M

+1.6
MILLION

+1.6
MILLION

+3.6
MILLION

2045

10M

7.6M

22.5M

SoCal Today

Planning for 2045 – Our Changing Age Structure



**UNDER
15**



15-64



65+

2015

3.7M

12.6M

2.4M

2045

3.9M

14M

4.6M

BY 2045

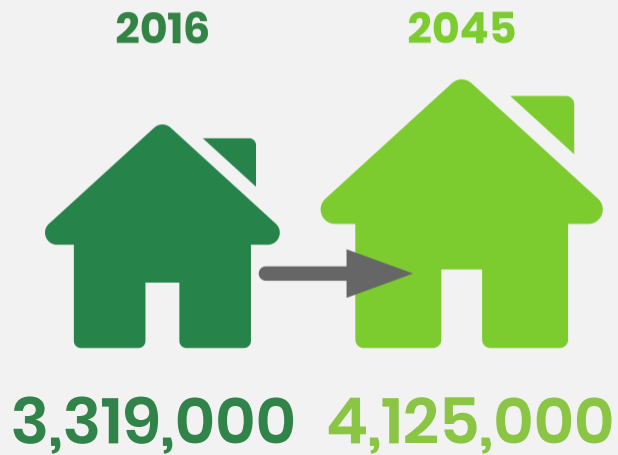
1 IN 5

PEOPLE WILL BE AGE 65+

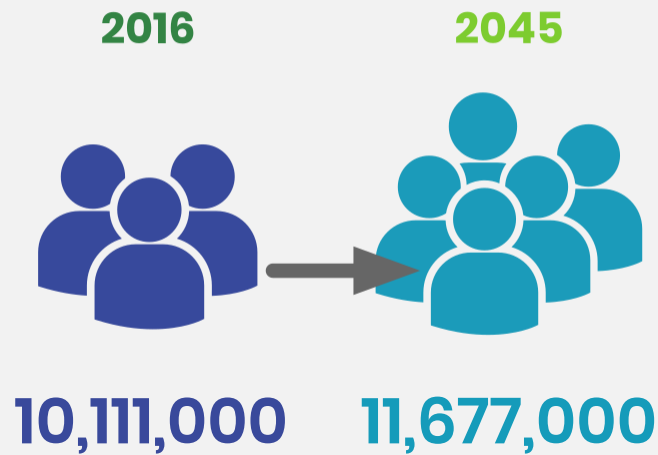
How Los Angeles County Will Grow



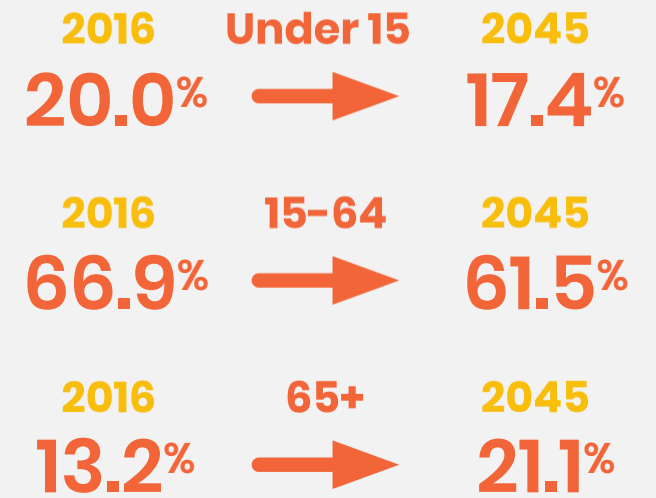
HOUSEHOLD GROWTH



POPULATION GROWTH



CHANGING DEMOGRAPHICS



A Path to Greater Access, Mobility & Sustainability

About the Plan

SoCal Today

Paying Our
Way
Forward

Measuring Our
Progress

Looking
Ahead



Core Vision & Key Connections



ROOTED IN THE 2008 AND 2012 PLANS, CONNECT SOCAL'S **CORE VISION** CENTERS ON:

- **Maintaining** and better managing the transportation network we have for moving people and goods.
- **Expanding** mobility choices by locating housing, jobs, and transit closer together.
- **Increasing** investment in transit and complete streets.

KEY CONNECTIONS AUGMENT THE CORE VISION OF THE PLAN TO:

- **Leverage and align new technologies** with land use and transportation strategies.
- **“Close the gap”** to meet increasingly aggressive greenhouse gas reduction goals.

A Path to Greater Access,
Mobility & Sustainability



Core Vision



**COMPLETE
STREETS**



**SUSTAINABLE
DEVELOPMENT**

A Path to Greater Access,
Mobility & Sustainability



**DEMAND & SYSTEM
MANAGEMENT**

Core Vision



**TRANSIT
BACKBONE**



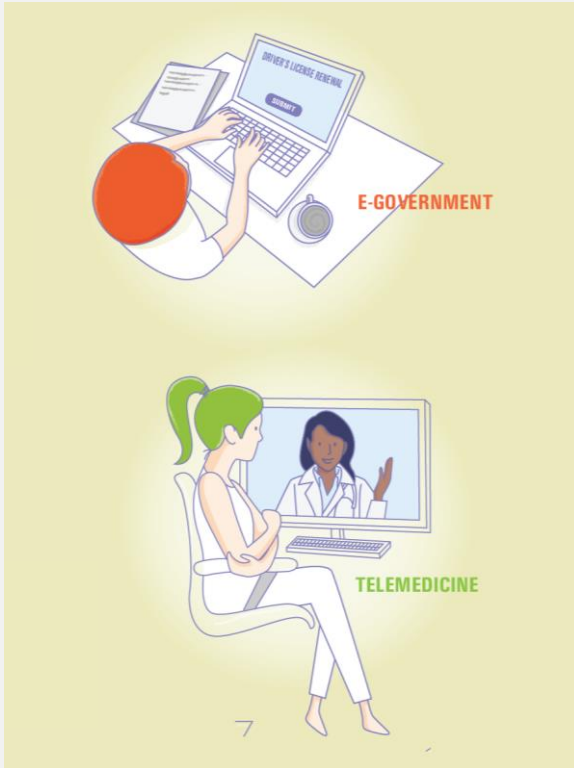
**SYSTEM PRESERVATION
& RESILIENCE**



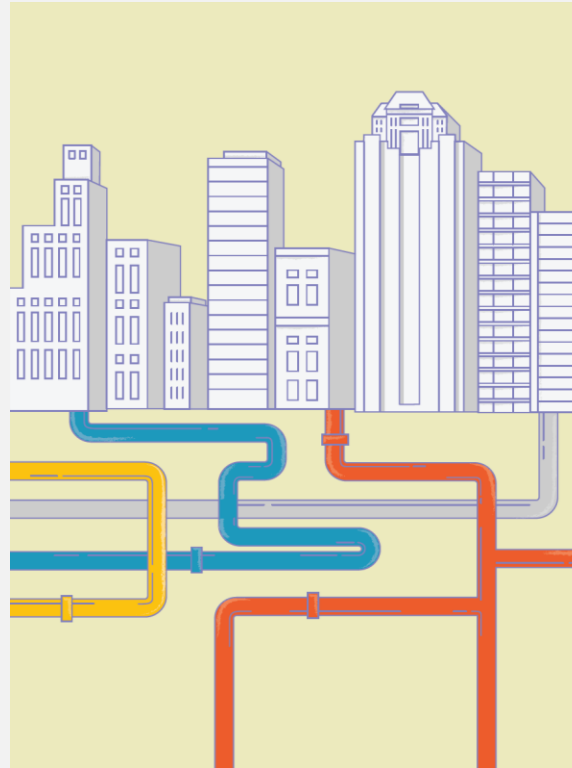
**GOODS
MOVEMENT**

A Path to Greater Access,
Mobility & Sustainability

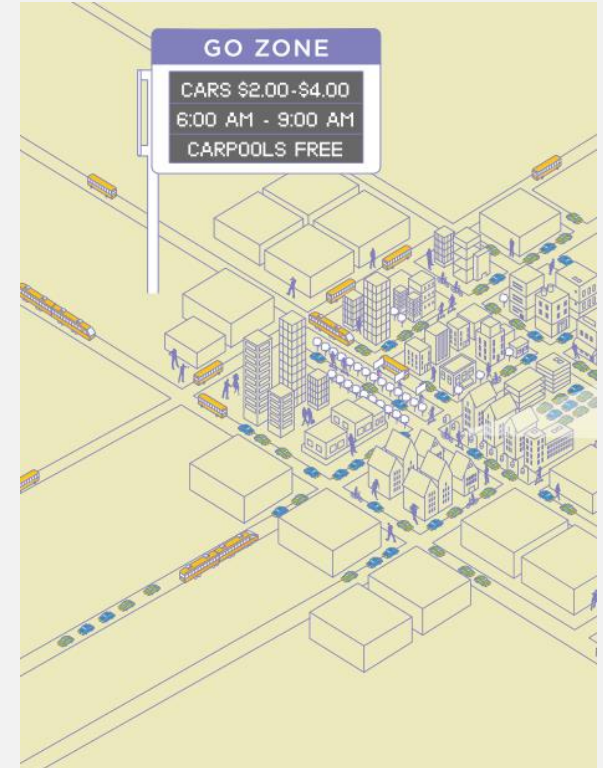
Key Connections



**SMART CITIES &
JOB CENTERS**

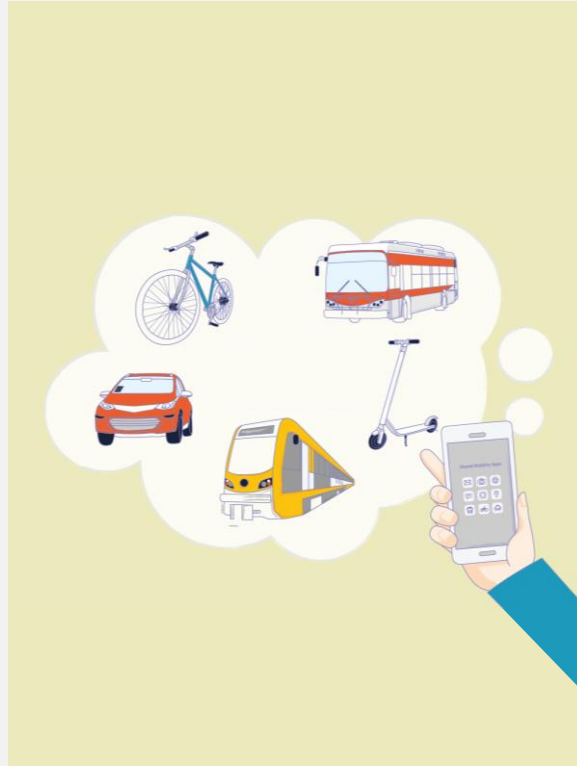


**HOUSING SUPPORTIVE
INFRASTRUCTURE**

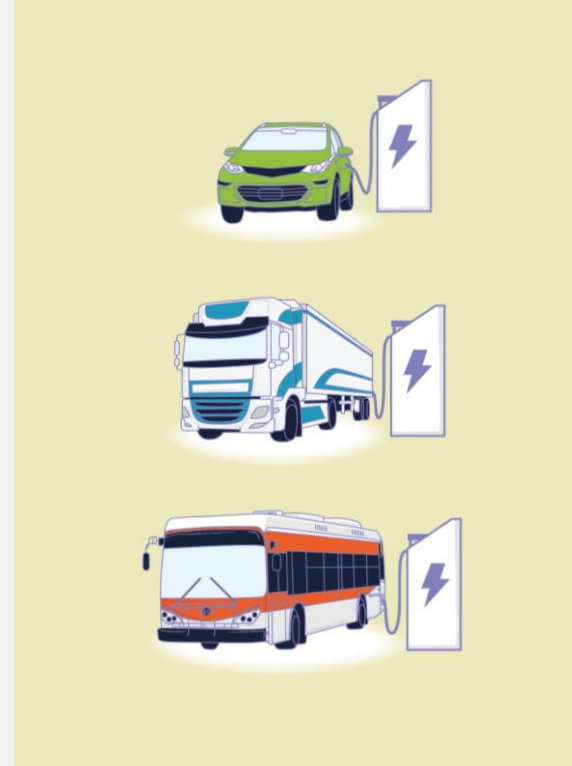


**GO
ZONES**

A Path to Greater Access,
Mobility & Sustainability



**SHARED MOBILITY &
MOBILITY AS A SERVICE**



**ACCELERATED
ELECTRIFICATION**

A Path to Greater Access,
Mobility & Sustainability

Paying Our Way Forward

About the Plan

SoCal Today

A Path to Greater
Access, Mobility &
Sustainability

Measuring Our
Progress

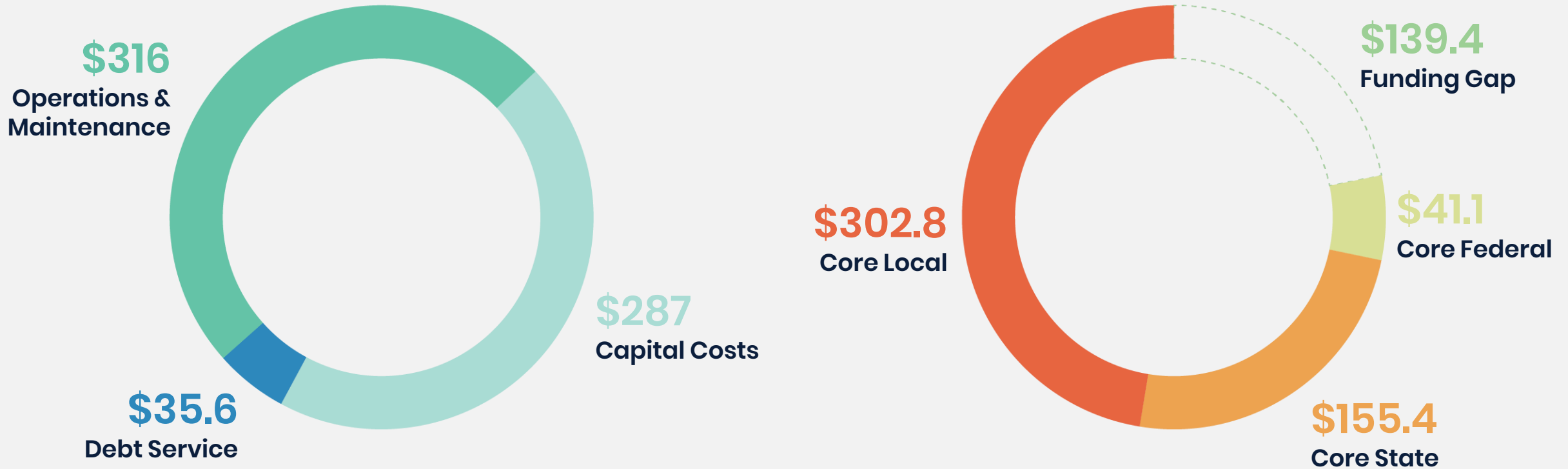
Looking
Ahead



Insufficient Core Revenues to Meet System Needs



**Draft Total SCAG Region System Needs:
\$638.6 billion (in nominal dollars)**



Paying Our Way Forward

New Revenue Sources



Revenue Source	Amount (billions, in nominal dollars)
Federal Gas Excise Tax Adjustment to Maintain Historical Purchasing Power	\$2.7
Mileage-Based User Fee (Replacement)	\$42.7 (est. increment only)
Federal Credit Assistance; Bond Proceeds	\$2.2
Private Equity Participation	\$6.3
Local Road Charge Program	\$77.8
Value Capture Strategies	\$3.0
Transportation Network Company (TNC) Mileage- Based Fee	\$4.7
	\$139.4 billion

Measuring Our Progress

About the Plan

SoCal Today

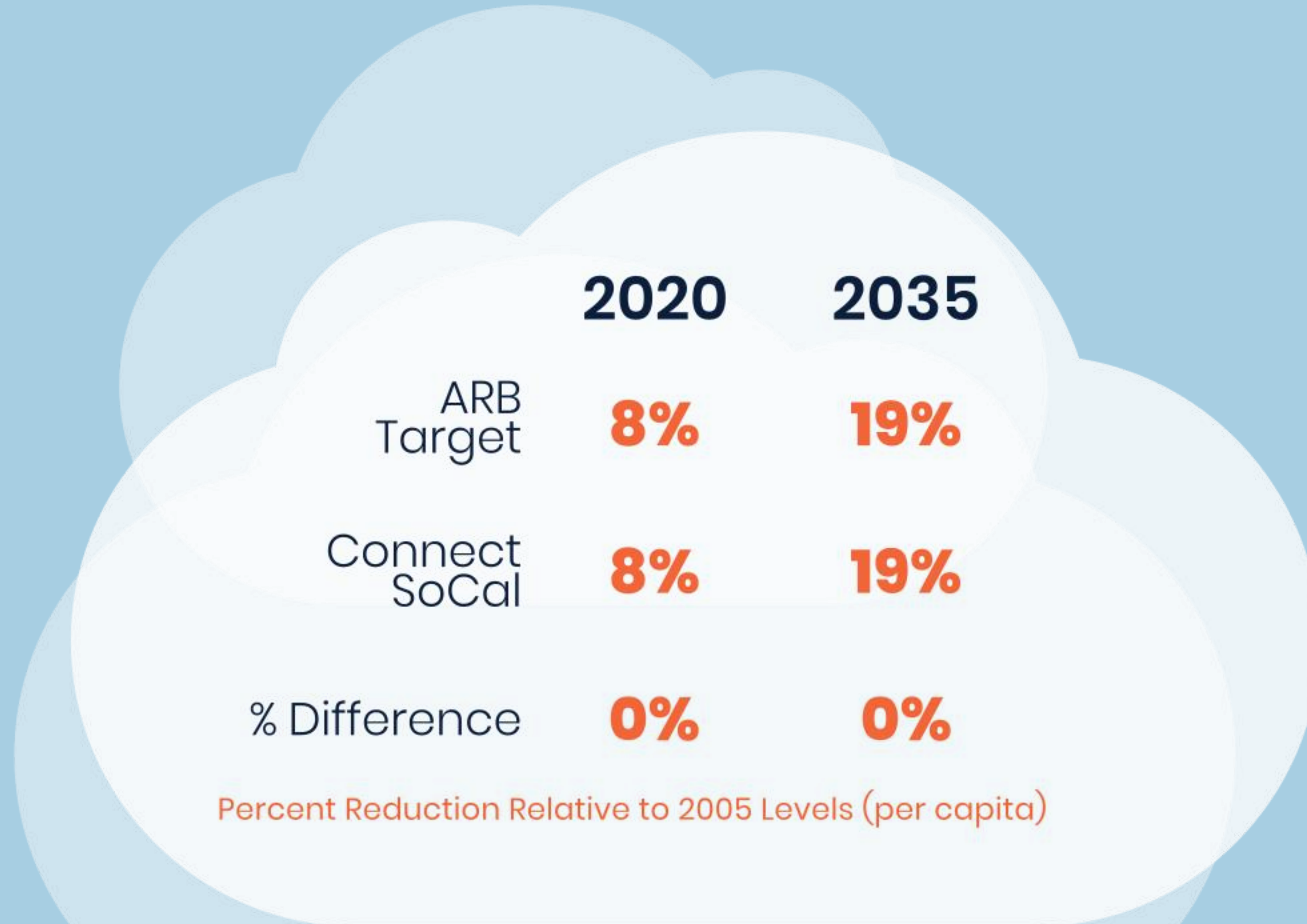
A Path to Greater
Access, Mobility &
Sustainability

Paying Our
Way
Forward

Looking
Ahead



Benefits of Plan Implementation



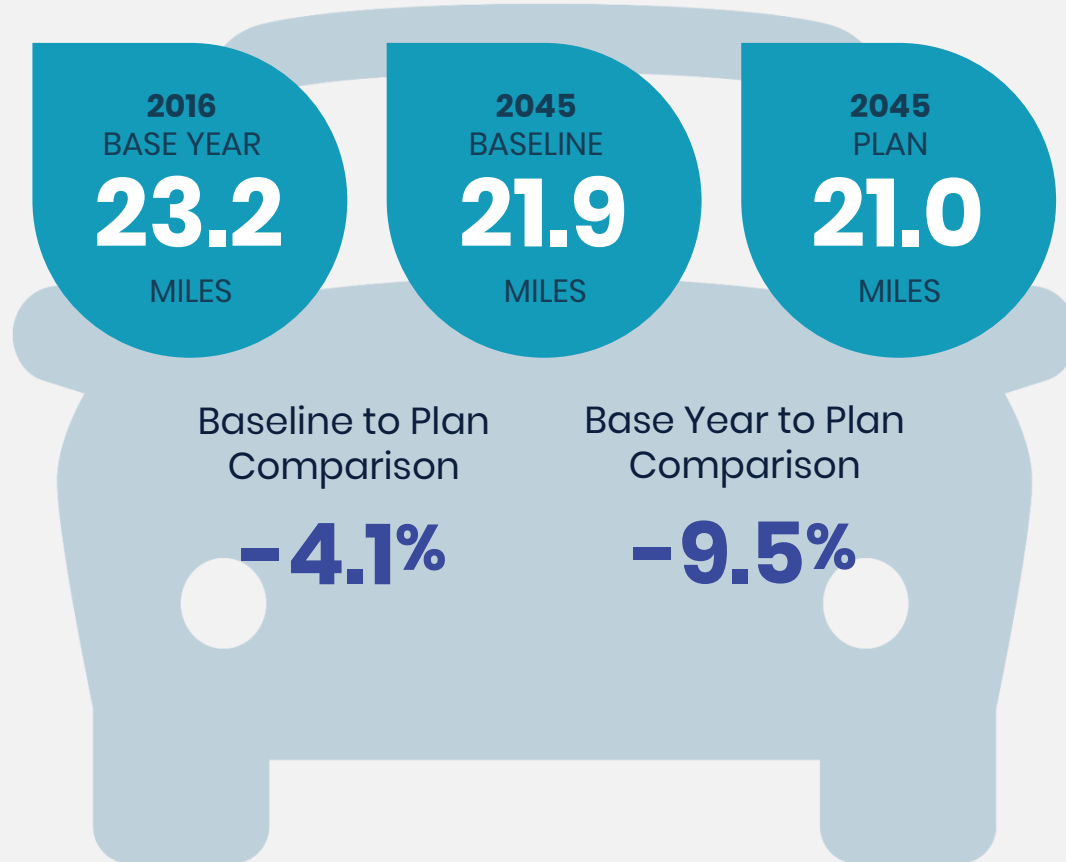
Percent Reduction Relative to 2005 Levels (per capita)

Measuring Our Progress

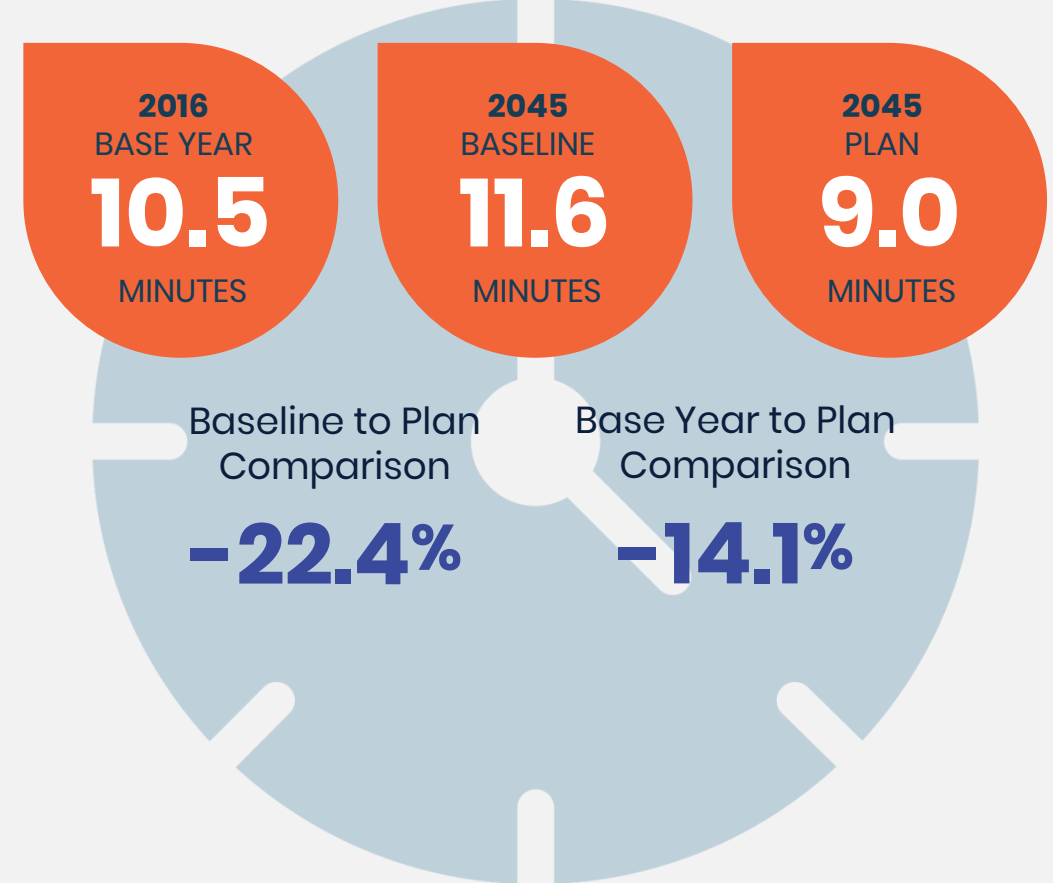


Benefits of Plan Implementation

Reduced Daily Vehicle Miles Traveled (per capita)



Reduced Daily Minutes of Delay (per capita)





167,100
Average Annual Jobs
Over Life of Plan

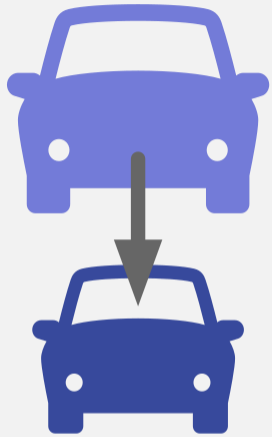


195,500
Average Annual Jobs
Over Life of Plan

Plan Benefits for Los Angeles County



REDUCES VEHICLE MILES TRAVELED



4.4%

Decrease when plan compared to baseline

EMPLOYMENT IMPACT



195,100

Average jobs generated per year

HOUSEHOLD COST SAVINGS (TRANSPORTATION, WATER, ENERGY)



LAND CONSUMED



Reduction in greenfield area of preserved land compared to trend

PROJECTED DAILY DELAY IMPROVEMENTS (PER CAPITA)



2016 Delay



2045 Delay without plan



2045 Delay with plan

Measuring Our Progress

Looking Ahead

About the Plan

SoCal Today

A Path to Greater
Access, Mobility &
Sustainability

Paying Our
Way
Forward

Measuring Our
Progress



- Is a **transportation infrastructure investment strategy** that will impact Southern California, and beyond.
- Will invest over **\$638 billion on transportation improvement projects**.
- Will locate housing, jobs and transit closer together in **priority growth areas** while preserving natural lands and open spaces.
- Will **link the built environment and transportation system** with policies, projects and programs that strengthen and enhance each other beyond what each would accomplish in isolation.
- Will **deliver significant benefits to the region** with respect to mobility, safety, health outcomes, travel time reliability, air quality, economic productivity, environmental justice, and transportation assets.
- Will **generate approximately 362,700 jobs annually**.



COMPASS

NOT A ROADMAP



VISION

NOT A GUARANTEE



PLATFORM

FOR REGIONAL COLLABORATION
AND PARTNERSHIPS

What's Next?



Draft Connect SoCal & PEIR Release	Nov. 2019
Connect SoCal Public Comment Period	Nov. 2019 – Jan. 2020
Connect SoCal PEIR Public Comment Period	Dec. 2019 – Jan. 2020
Elected Official Workshops	Nov. 2019 – Jan. 2020
Public Hearings	Dec. 2019
Final Adoption of Connect SoCal & PEIR	April 2020





VIEW THE DRAFT CONNECT SOCIAL PLAN

www.connectsocial.org/draft

SHARE YOUR FEEDBACK

www.connectsocial.org/feedback



Thank You!

Learn more by visiting
www.connectsocial.org