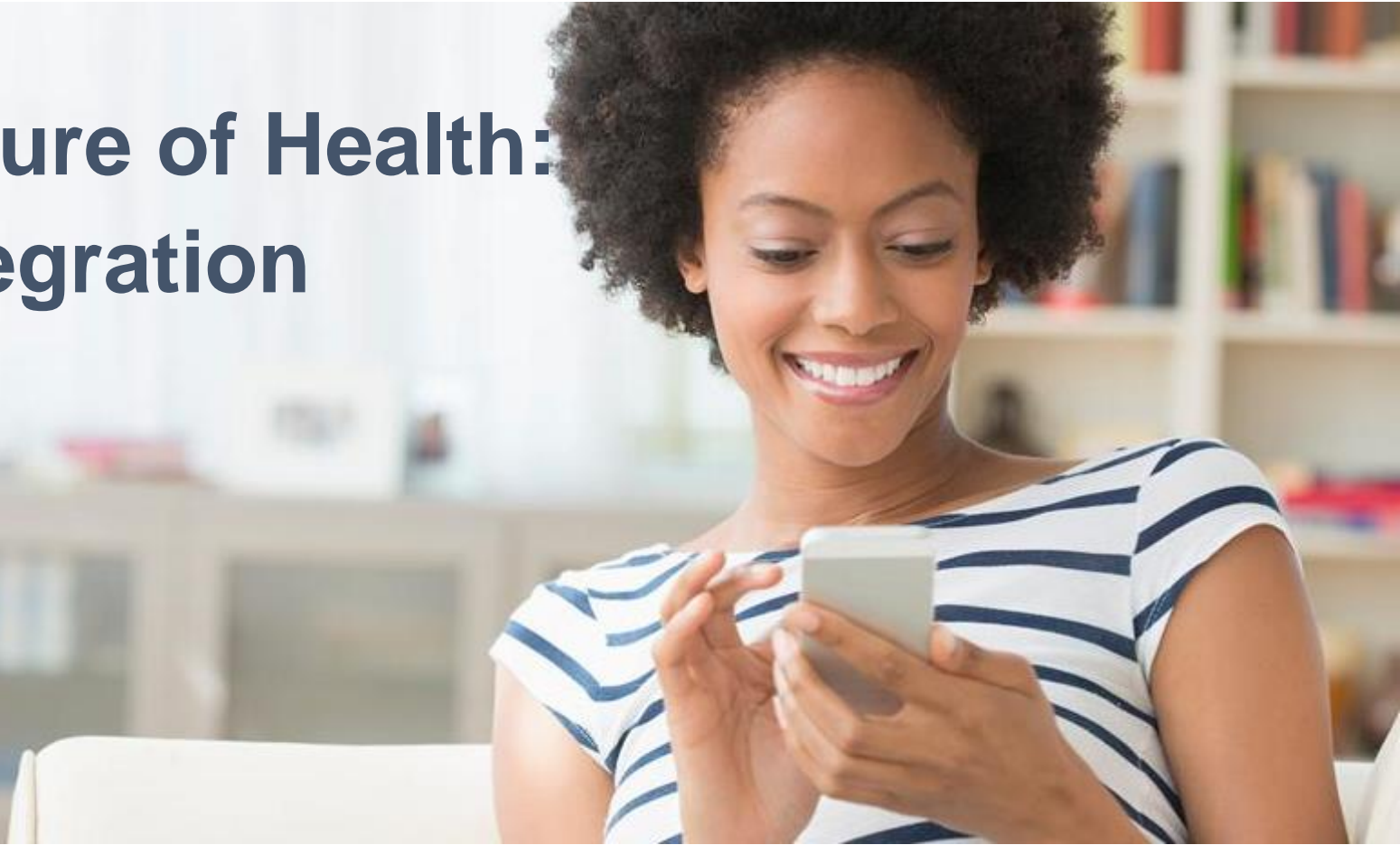


The Future of Health: Life Integration



Ozzie Martinez, MPH

Chief Administrative Officer

Kaiser Permanente South Bay Medical Center

A black and white photograph of a doctor in a white lab coat with a stethoscope around their neck. The doctor is holding a bright red, realistic-looking heart in their right hand. A semi-transparent dark grey horizontal bar is overlaid across the middle of the image, containing the text "WHAT DO YOU WANT FROM HEALTHCARE?".

WHAT DO YOU WANT FROM HEALTHCARE?

What
Do You
REALLY

Want?





WHO WE ARE



240,000+ MEMBERS. 460 PHYSICIANS. 3,384 EMPLOYEES. 235 LICENSED BEDS.

About Kaiser Permanente

70 years
KAISER PERMANENTE.



More than **17,000** physicians and **175,000** employees (including **49,000** nurses)

38 hospitals



618 medical offices and other outpatient facilities



\$62B
in assets

\$56B
in revenue

Over **1,100** clinical trials

10 million +
members



93,675
BABIES
DELIVERED



6,003
NEUROSURGERIES



3,292
OPEN HEART
SURGERIES

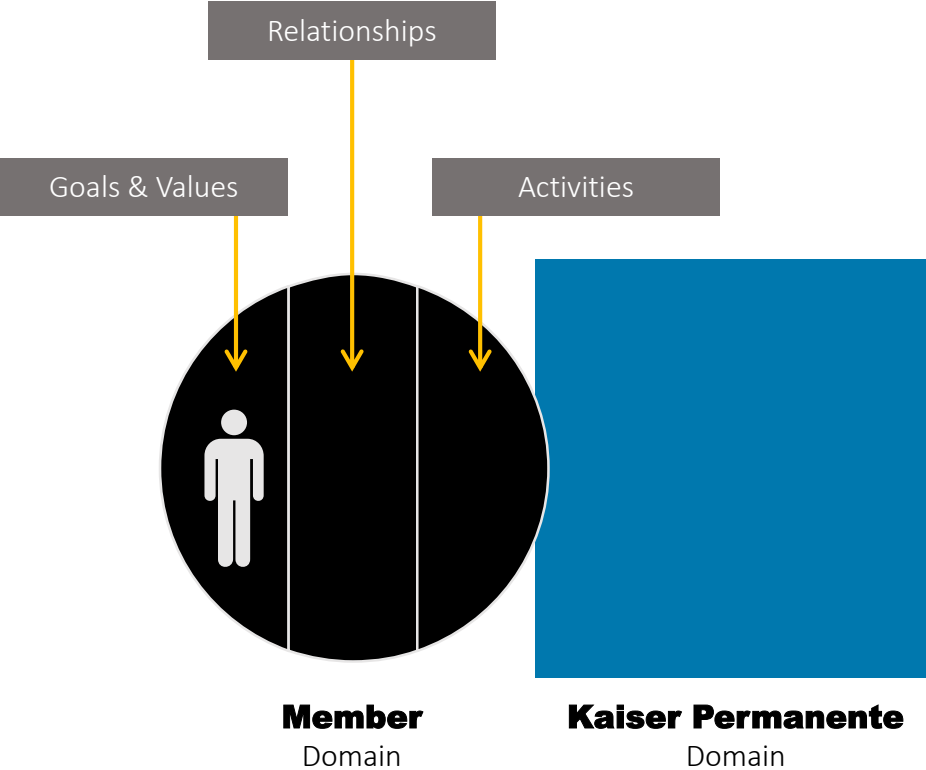


500,665
DIABETICS

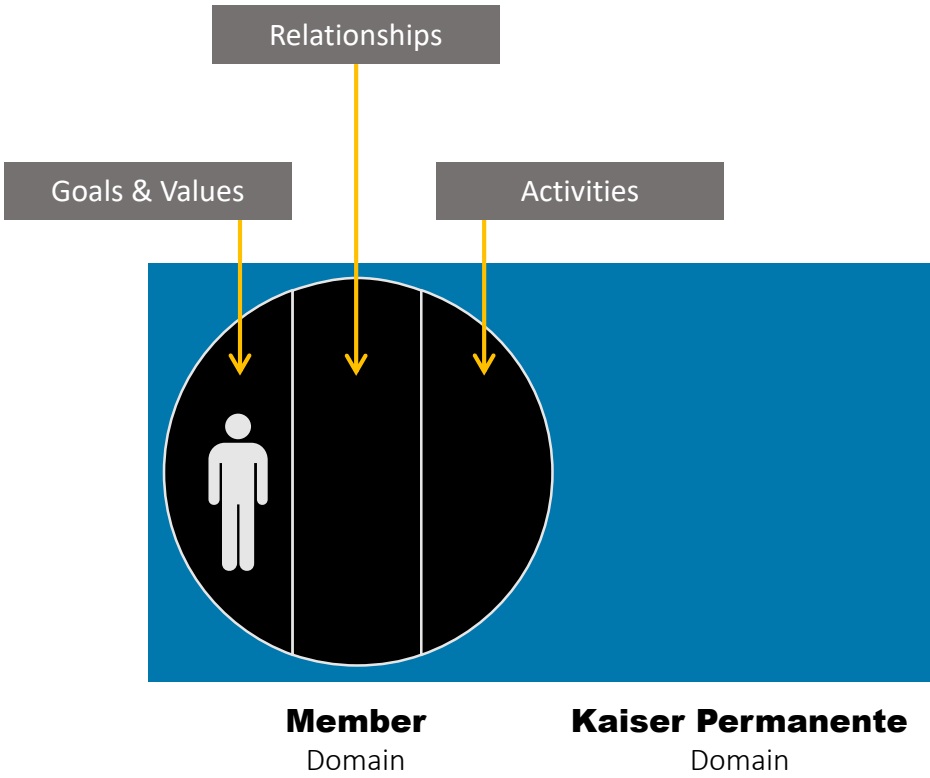


26,000
JOINT
REPLACEMENTS

Today



Future – Life Integration

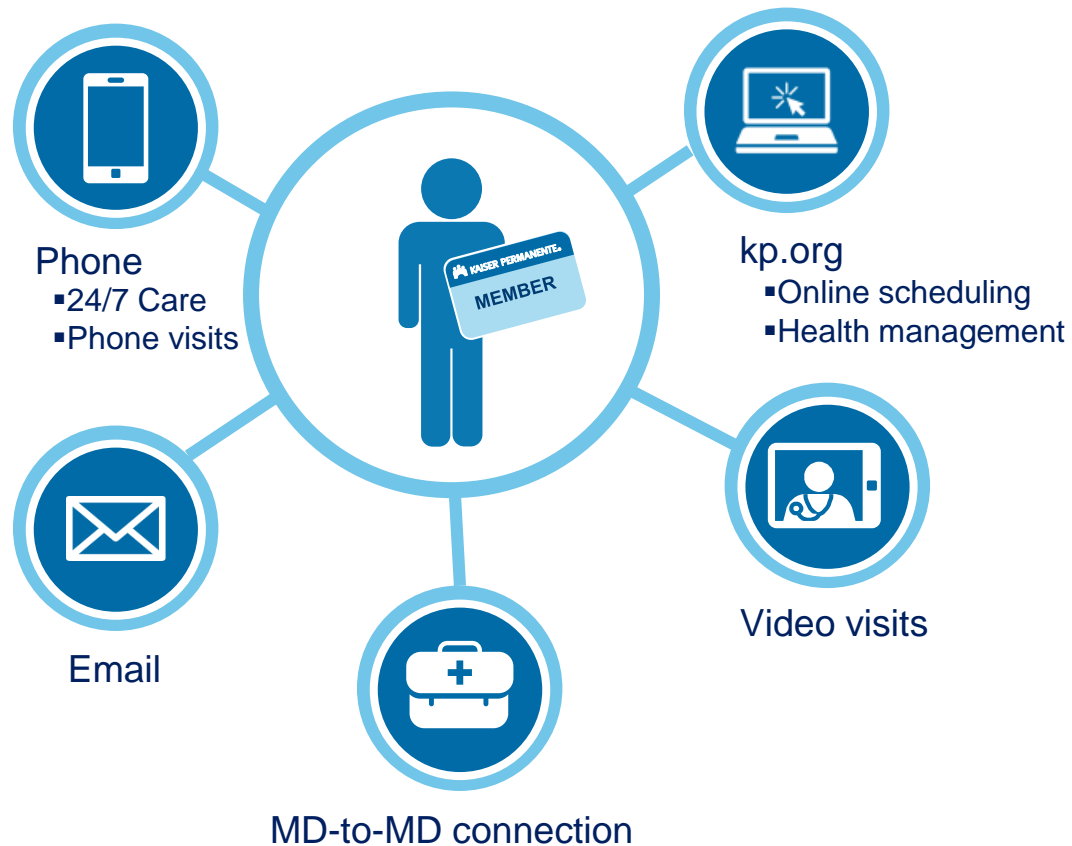


A network that comes to our patients



What is Telehealth?

Communication technology to help members resolve health issues.



Proactive Care



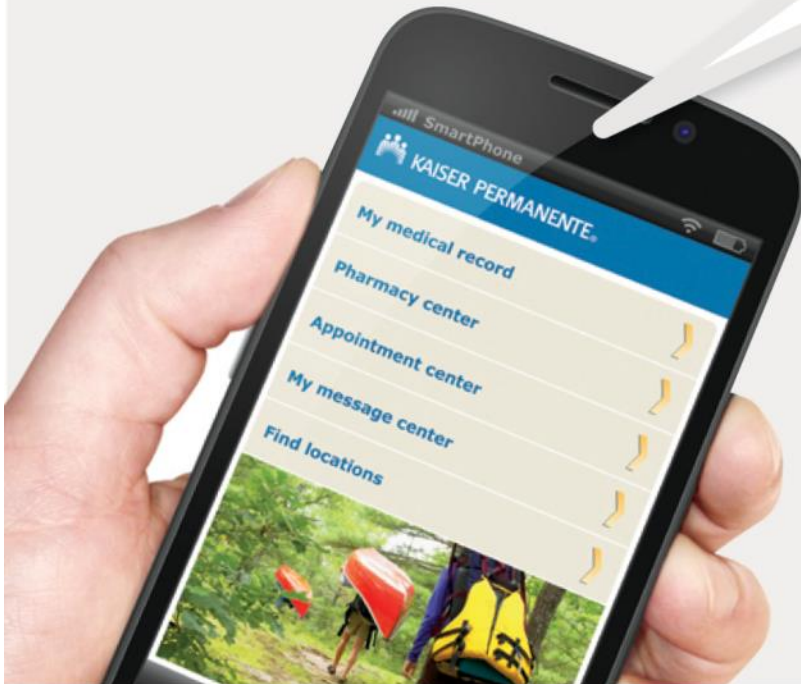
Integration and Innovation

Better care, more services, and better value.

> Best Mobile Communications

– eHealthcare

- ✓ **131.6 million** visits to kp.org
- ✓ **34.5 million** lab test results viewed online
- ✓ **14.8 million** emails to doctors' offices
- ✓ **14.8 million** prescriptions filled online
- ✓ **3.7 million** appointments scheduled on kp.org



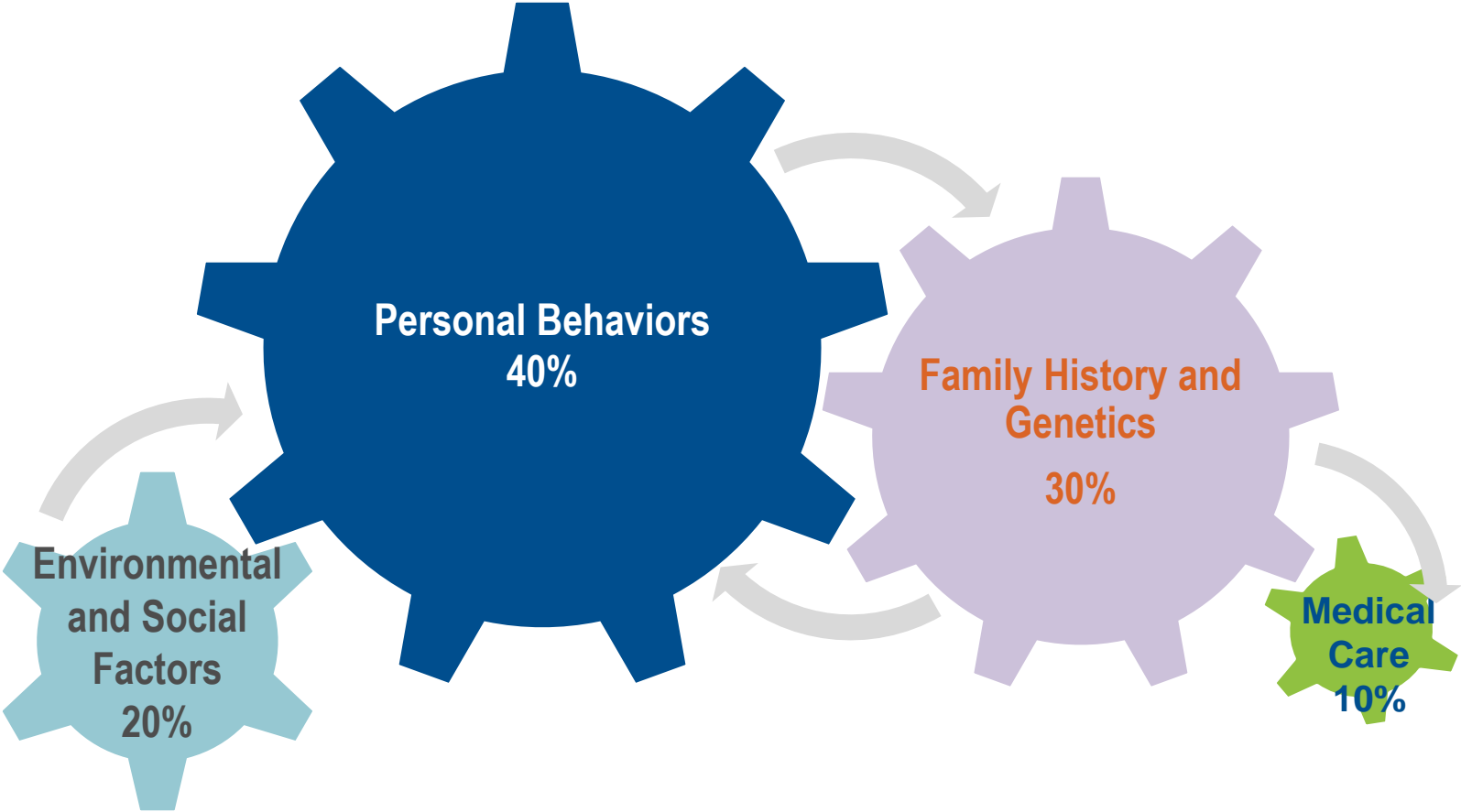
Changing Demographics



State of the Art Medical Facilities



Social and economic determinants of health



Source: McGinnis et al, Health Affairs, 2002

common purpose with the community





go upstream

create shared value





activate locally



collective impact





unleash your potential

Thank you!



kp.org/thrive