



**SOUTH BAY CITIES**  
COUNCIL OF GOVERNMENTS

---

# **Legislative Briefing**

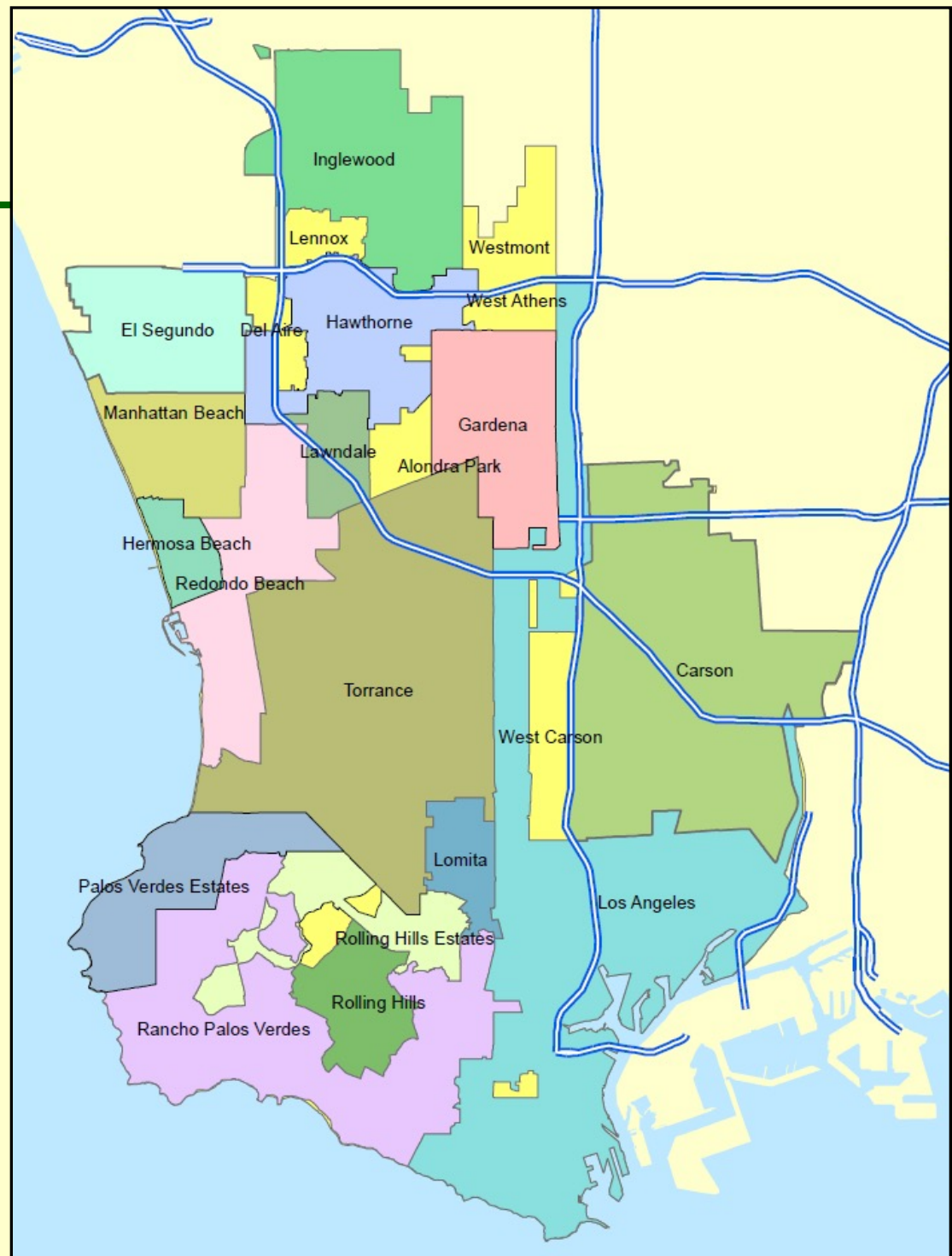
**January 13, 2022**

**Zoom!**



# Update of South Bay Initiatives:

- Highlights since  
October 2021





# **SBCCOG Update**

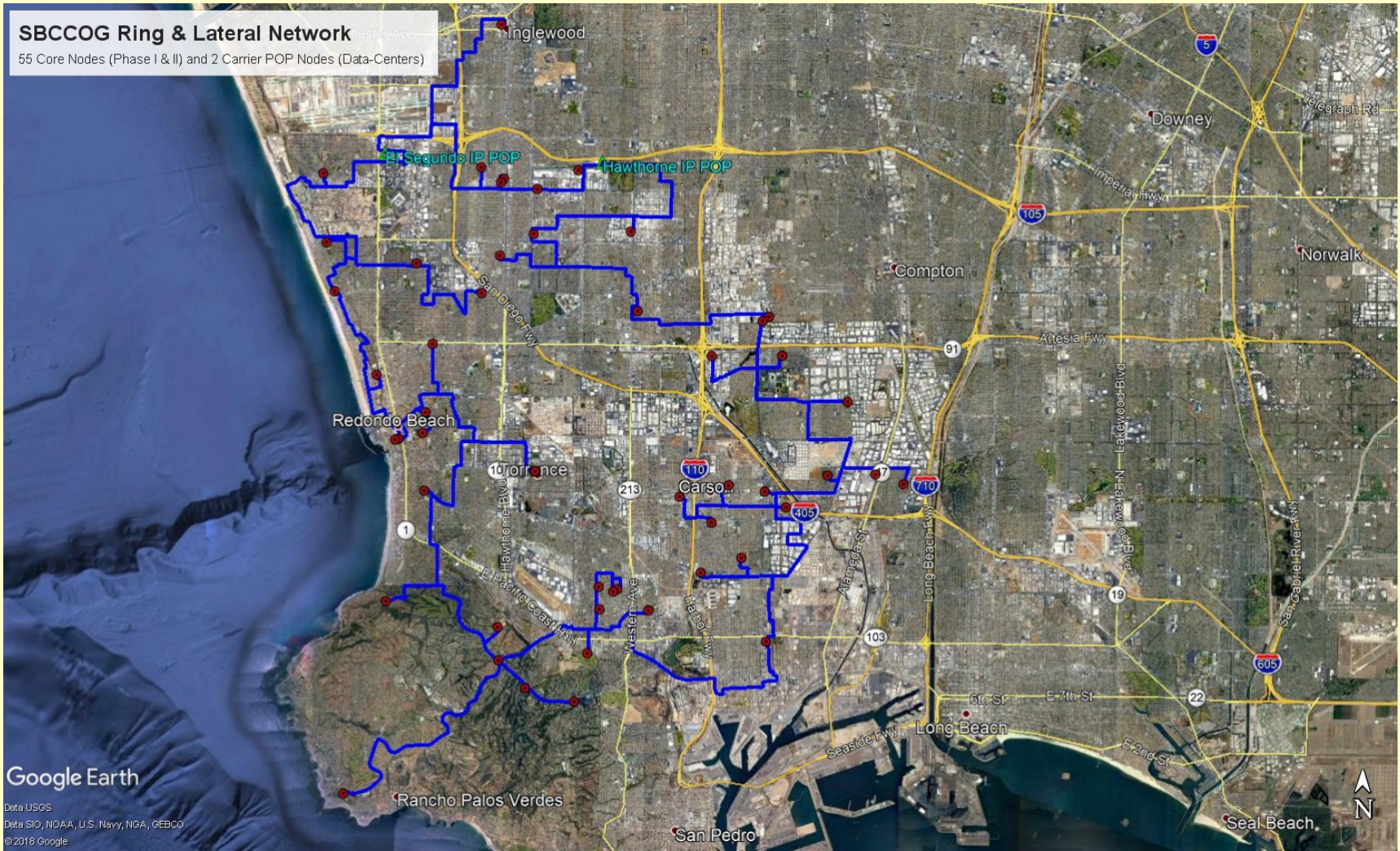
---

- South Bay Fiber Network
- Local Travel Network
- Transportation Projects
- Homeless Services
- Environmental Programs – SBESC



# South Bay Fiber Network

**SBCCOG Ring & Lateral Network**  
55 Core Nodes (Phase I & II) and 2 Carrier POP Nodes (Data-Centers)



Google Earth

Data USGS  
Data SIO, NOAA, U.S. Navy, NGA, GEBCO  
© 2018 Google





# South Bay Fiber Network

---

- 37 sites now billing for service using the SBFN
- Winding down the site selection and construction process:
  - 3 New sites to "turn-up" service by mid-January:
    - Communications Center (Hawthorne) and 2 sites in Lomita
  - Redondo Beach & Torrance Transit Centers exploring their interest
- SBFN Working Group meets every other month – January 31 next:
  - Exploring Sub-Regional and Multi-Jurisdictional applications including:
    - Neighborhood Tech and Access Centers
    - Development of secondary/tertiary connection to the SBFN
      - Wireless and/or microtrenching into underserved areas





# Local Travel Network

- Projects:
  - Wayfinding/Signage Planning
  - Beach Corridor Implementation
  - Inland Corridor Implementation
  - Legislative Proposals
    - NEV designation
    - Rebates for ALL zero emission slow speed powered vehicles

## Using the Local Travel Network

### Explore how your neighborhood streets connect to the Local Travel Network

Neighborhood streets (green) form an informal network of connections to the LTN (purple).

Click on the crosshairs symbol to locate your neighborhood, or click on the magnifying glass and type your address

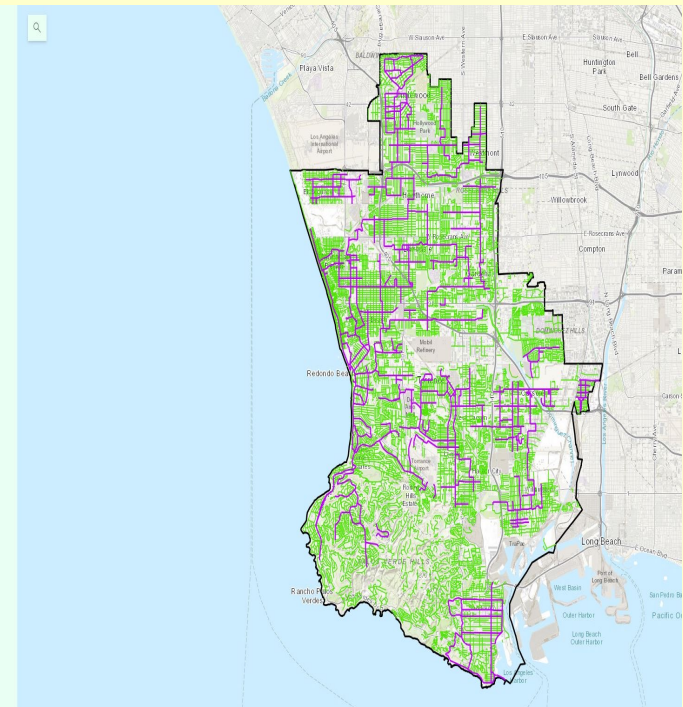
Click the boxes below to see destinations included on the Local Travel Network

Supermarkets and Shopping Centers

Employment Centers

Schools

Parks and Recreation



Visit our story map and take our survey

<https://www.southbaycities.org/featured-content/local-travel-network-south-bay>



# South Bay Transportation Projects

---

- SBCCOG is monitoring Metro's implementation of:
  - Fareless System Initiative pilot, Low Income Fare improvement, service recovery and the impacts on South Bay municipal operators
  - Traffic Reduction/Congestion Fee policies
  - EIR for C Line (Green Line) extension to Torrance, Crenshaw Northern Extension, Inglewood Transit Connector, LAX/Metro Connector, Centinela Grade Separation
  - I-405 ExpressLanes Study & Sepulveda Corridor Transit Project
  - I-405 Comprehensive Multimodal Corridor Plan



# South Bay Transportation Projects

---

Projects funded from Measure R (2008) and Measure M (2016) since each program started

- Measure R (Highway + Transit): \$831.75 million
- For Measure M (Highway): \$211.4 million
- SBCCOG, Metro, and city staff will kick off the FY 23/24 Measure R & M program cycle in Fall 2022





# Homeless Services for the South Bay - Highlights

---

- SBCCOG is working with LA County and Century Housing on a 20 unit Project Homekey site in Redondo Beach
  - Additional sites: - 136 unit site in Carson; and 46 units in Inglewood
- 2 motels identified (Gardena and San Pedro) – less than 20 units
  - Too small for Project Homekey and developers are looking for alternatives to convert to shelter or housing
- Caltrans has offered 2 large empty sites for potential development in the West Athens unincorporated area (near Hawthorne, Inglewood, and Gardena), but they are superfund sites and need clean up
- Home Share South Bay matches home providers with compatible housemates - [www.silvernest.com/SouthBay](http://www.silvernest.com/SouthBay)
- Issue with AB 1482 5% rent cap not applicable to mobile homes
  - New owner of Skyline Senior Mobile Home Park is passing on property tax assessment in a form of an 18% rent increase on fixed income seniors



# Environmental Programs - SBESC

---

## ■ **Climate Action Plans/Adaptation**

- Updating city and sub-region greenhouse gas inventories. Cities can use these updates to assess efforts towards 2020 greenhouse gas reduction goals.

## ■ **Water Programs** - SBESC is helping to provide water saving devices, rebates, and information to residents & businesses. Partnering with West Basin, the SBCCOG helps implement:

- High-efficiency clothes washer rebates (focus on DAC communities)
- Cash for Kitchen water audits for South Bay businesses
- Rain barrel give-a-ways January 29, 2022 – Edward C. Little Water Recycling Facility (El Segundo) 8-11AM & February 5, 2022 – West Basin Municipal Water District Headquarters (Carson) 8- 11AM



# Environmental Programs

## SBESC

---

- **Energy Efficiency & Waste Programs** – Partnering with Southern California Regional Energy Network and Sanitation Districts of Los Angeles, the SBCCOG helps provide comprehensive city facility assessments/project identification and information on food waste. Program promotion is through virtual forums, tours and how-to videos.
- **Two SBESC Newsletters** – South Bay Environmental Services Center and South Bay Green Business Assist Program Newsletter – to get information on rebates, best practices, and achievements on environmental action. These are in addition to our quarterly SBCCOG Bay Watch newsletter. Subscribe @ <https://bit.ly/3tj4SFC>.



# **22<sup>th</sup> Annual General Assembly**

---

**Thursday, March 24, 2022 –  
8:30 am to 1:30 pm**

**Back? to the Future:  
Imagining the South Bay**



**Thank you!**

**Questions?**