



# South Bay Cities Council of Governments

Ana Abril-Urias  
Courtney Reed  
Haley Fuselier

# PATH in the South Bay

---

- Intensive Street Case Management
- Screenings and CES
- Housing Location Services
- Ongoing Supportive Services
- Interim Housing referrals
- Housing Voucher assistance



# Outreach Schedule

“Divide and conquer!”

## Gillian Stucki

- **Monday:** Redondo Beach & Gardena
- **Tuesday:** LA HOP Requests & Wilmington
- **Wednesday:** Carson & Redondo Beach
- **Thursday:** West Athens & Redondo Beach
- **Friday:** Follow Up / Retention / Case Conference/ Documentation

## Stephanie Valencia

- **Monday:** Wilmington & Gardena
- **Tuesday:** LA HOP Requests & Harbor City/ Lomita
- **Wednesday:** Hawthorne/Lawndale & Torrance
- **Thursday:** El Segundo/Lennox & West Athens
- **Friday:** Follow Up / Retention / Case Conference/ Documentation

**\* The schedule is based on case management appointments and is adjusted to best serve participants.**



# LA-HOP (la-hop.org)



- County-wide, web-based portal
- Constituents can submit requests for outreach services
- Requests are routed to the appropriate regional coordinator
- The Region's Outreach Coordinator triages the request to the most appropriate outreach team
- The outreach team accepts the requests, deploys outreach services

**1** Enter address of person/people in need

**i** Acceptable address formats:

- 811 Wilshire Blvd, Los Angeles 90017
- Wilshire Blvd and Figueroa St, Los Angeles
- Wilshire Blvd at Figueroa St, Los Angeles
- Wilshire Blvd & Figueroa St, Los Angeles

Enter address or place

**2** Tell us more about the person/people in need

**i** The more detail you can provide, the better!

\* Required fields

Description of location

Date last seen \*

Number of people \*

Name of person/people requiring outreach

Physical description of person/people \*

Description of person/people's needs \*

**3** Tell us more about you



SBCCOG LA-HOP Requests:  
November- December: 19  
Grand Total: 88 since July 2020

City by city breakdown

City:

- Carson 3
- Gardena 1
- Wilmington 2
- El Segundo 5
- Torrance 3
- Harbor Gateway 1
- Redondo Beach 3
- Lawndale 1





# Community Connections

Our team continues to foster relationships within the community.

- **Joint Outreach**
  - Lomita & McCoy Encampment
  - Gardena Encampment
  - Lawndale Encampment
  - Tiny Home Village
- **Redondo Beach Meal Programs**
  - St. Andrew's
  - St. James
  - Shared Bread at First United Methodist
- **Police Department**
  - Gardena
  - Redondo Beach
  - El Segundo
- **Local Shelters**
  - Doors of Hope
  - Beacon Light





# Community Referrals

- **Pastor Jefferson Referrals:**
  - Since August, Pastor Jefferson from **City of Hawthorne** has referred individuals in need. Individuals have been assisted by continuing working with our Outreach team, referred to adequate agency, or provided resource needed at the moment
  - **Total referrals obtained & assisted: 15**
- **Community Referrals:**
  - **City of Gardena Office Members** reached out directly to our team to assist with a direct referral for an individual in need
  - **El Segundo PD** has directly made referrals to our team for individuals in need encountered while patrolling the city
  - **City of Torrance Office Members** have reached out directly to our team for collaborations with Torrance Outreach Team and/or assistance with Outreach referrals



# South Bay COG 21-22 Outcomes

September 2021- August 2022

<b>SD 4</b>	<b>YTD%</b>
<u>Goal</u>	
Mental Health	2.6%
Primary Care	11%
Substance Dependency	2.6%
Increase Income	8%
Permanent Housing	8%

<b>SD 2</b>	<b>YTD%</b>
<u>Goal</u>	
Mental Health	7.14%
Primary Care	50%
Substance Dependency	7.14%
Increase Income	7.14%
Permanent Housing	15%





# Current Efforts

Year to Date (Since Sept. 2021)



## New Enrollments:

12 New participants



## Referrals:

Rapid/Recovery Rehousing:8

Tiny Home/ Pallet Shelters: 6

Interim Housing: 6

- Current Caseload: 52

-Seniors: 18 active



## Housing Vouchers:

Vouchers Submitted: 49

Vouchers matched:18

Vouchers received:2



# Success Story

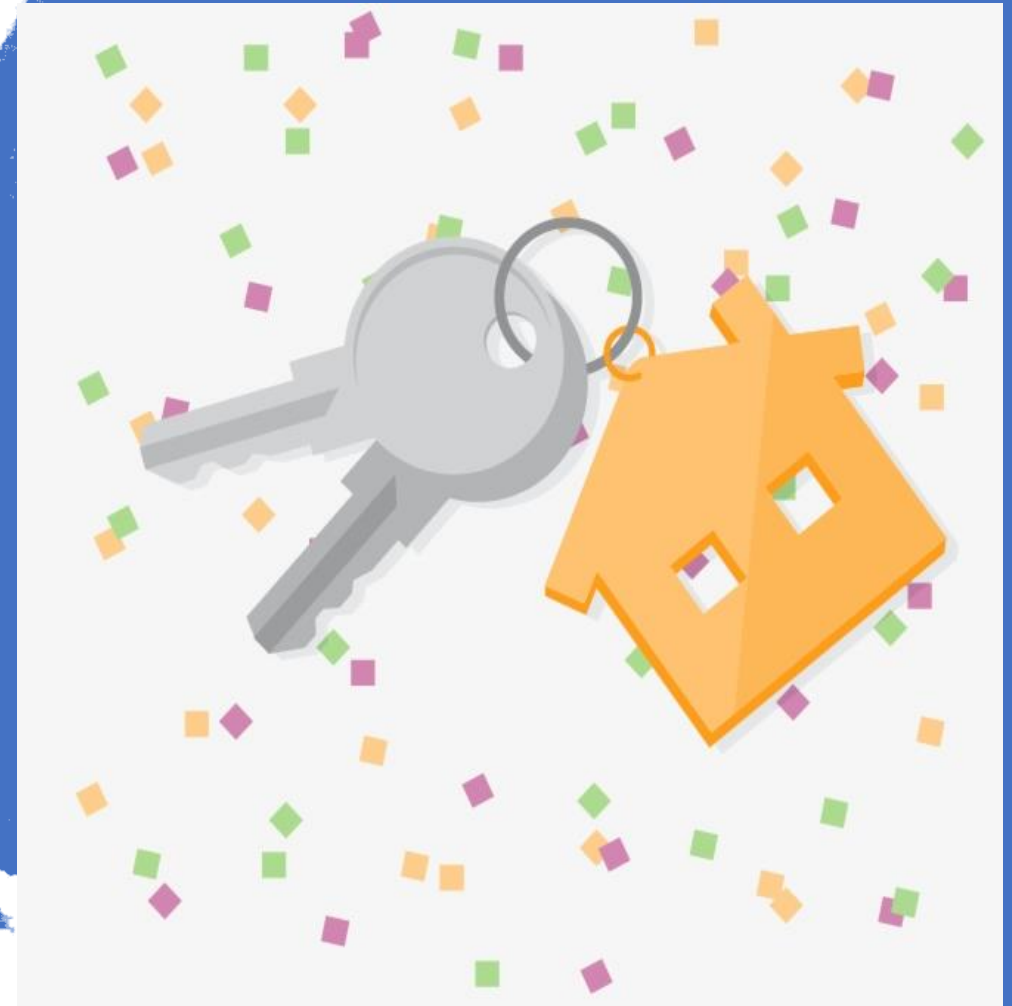
Heidi D. was previously experiencing homelessness and sleeping in her car when PATH encountered her from a referral by Mental Health America. In collaboration with MHA team and PATH outreach team, Heidi was able to obtain housing through PATH Villas in South Gate. Heidi was extremely thankful to everyone who assisted her with her housing process. Now she has a comfortable place to live in with a “fancy key that’s out of this world!”





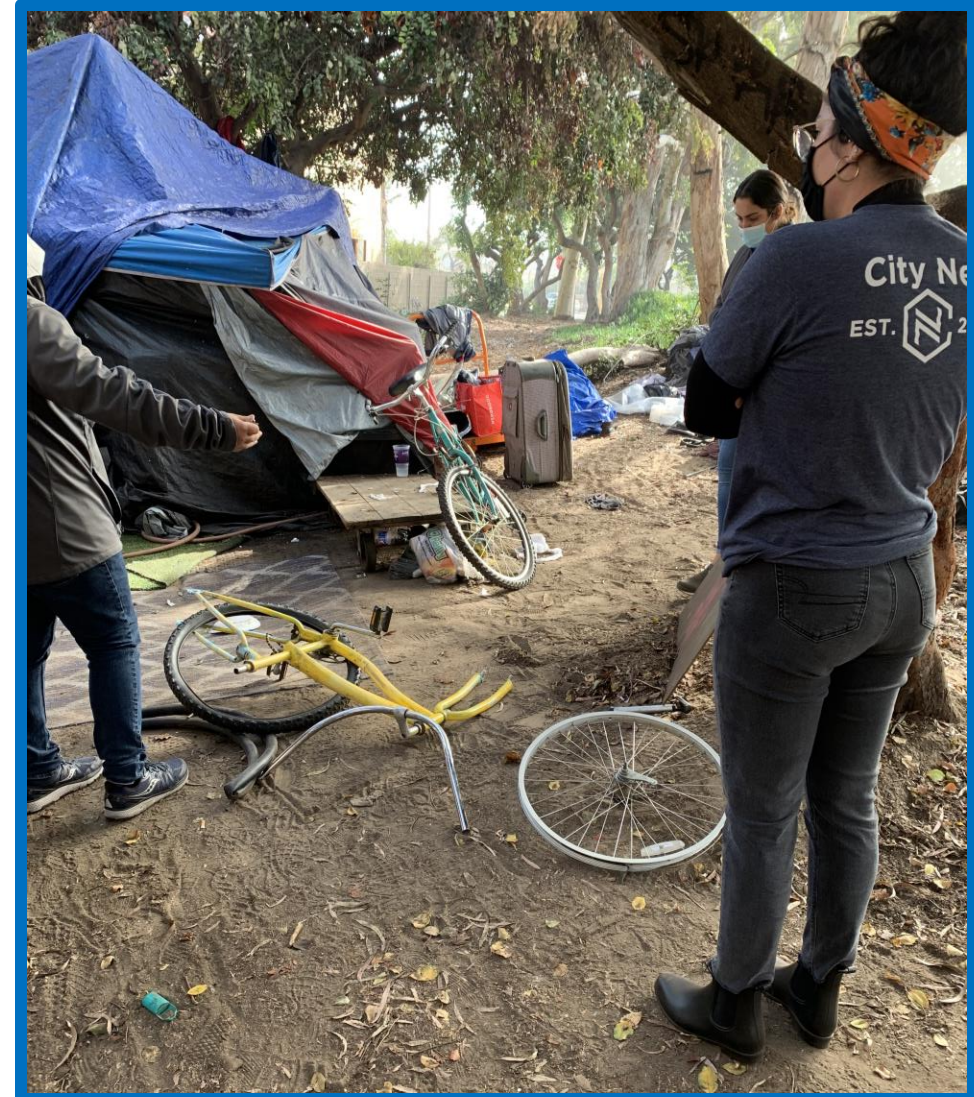
# Success Story

Tonya had been experiencing homelessness for almost 2 years when she was connected with PATH's Outreach Team through the Redondo Beach Homeless Court system. Even with full-time employment, rising rental costs and a history with two evictions caused her to be denied during her own housing search. PATH's team was able to find a landlord with flexibility and connect her with Rapid Re-Housing for continued services to insure support and stability through the remainder of her journey.





# Team-work makes the dream work





# Future Considerations

- **More promotion of usage of LA-HOP to community members and City staff**
  - Helps locate potential hotspots or even identify non-common locations
- **Consideration of utilizing COG Funds for interim housing solutions**
  - Tiny Home Village
  - A Bridge Home
  - Shelters (longer term)
  - Meal programs within each cities



# Stay Connected!



[www.ePath.org](http://www.ePath.org)



PATH – Making It Home



@PATHPartners



@PATHPartners



/PATHPartners

## CONTACT:

Courtney Reed  
Associate Director South Bay  
[CourtneyR@ePath.org](mailto:CourtneyR@ePath.org)

Ana Abril-Urias  
Program Manager SPA 8 Outreach  
[AnaAU@ePath.org](mailto:AnaAU@ePath.org)



**Thank You!**