

WPV PROGRAM UPDATE



Marcia Salvary, Executive Director
Carol Kitabayashi, Board Member

Village Model and Movement

Grassroots, self-governing, volunteer-driven, community-based, non-profit membership organizations

Assist older adults to remain active, independent, engaged, and age successfully in the places they call “home”

Fill gaps in service and are a cost-effective way to provide intergenerational communities of support



Village-to-Village Network - National
Village Movement California - State



VILLAGES ARE . . .

- Intentional, caring **communities** led by older adults
- Provide **connections**, **supports** and **expertise** to help members maintain independence as they age

AGING. BETTER.



VOLUNTEER BASED SUPPORTS

- **Social determinants of health**
 - **Social connection**
 - Transportation
 - Technology Support
 - Fall Risk Reduction
 - Grocery Shopping
 - And more!
- **Independent Activities of Daily Living**

PRO-SOCIAL PROGRAMMING

- Members lead
- Educate, socialize, create
- Build friendship and connection



Village Movement California envisions a society where all stages of life offer meaningful opportunities for growth, connection, and joy; where people of all backgrounds and economic means can age with dignity, purpose, and self-determination.

WPV Service Area...

- Westchester, Playa Del Rey
- Marina Del Rey, Playa Vista, Venice
- Culver City, Del Rey, Mar Vista, Palms
- Ladera Heights, Inglewood
- El Segundo, Manhattan Beach
.... other adjacent communities

Expanding into Inglewood and Hawthorne



WPV Pre- Pandemic

- In person activities and programs
- Friendly Visits/Walking Buddies
- Monthly Call A Neighbor (CAN)
- Technology Training
- Light Chores/Handywork
- Errands

\$700 Annual Fee

Transportation Services:

- Grocery/Other Shopping
- Medical Appointments
- Hair/Nail Salon
- Fitness/Wellness
- Social Outings



COVID-19 Impact

March 2020 Safer at Home Orders

Older adults 65+ most vulnerable

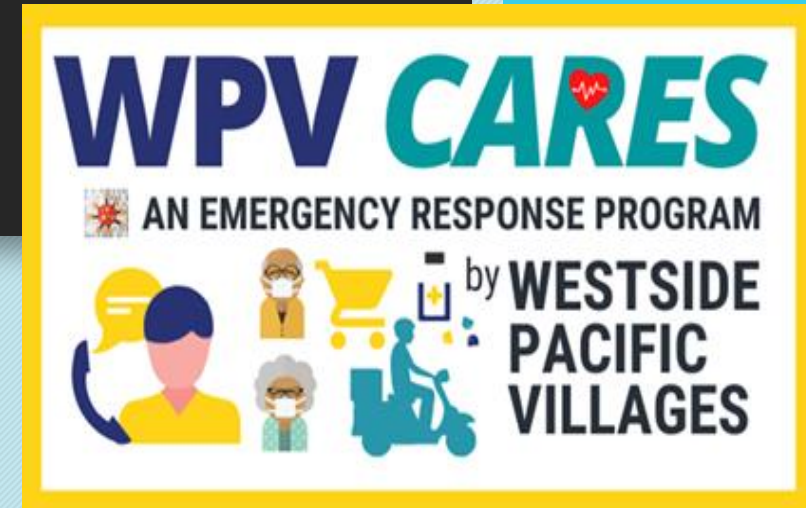
WPV received an outpouring of support

Quickly adjusted to help and reach more seniors

WPV CARES (COVID-19 Action Response for Eder Support)

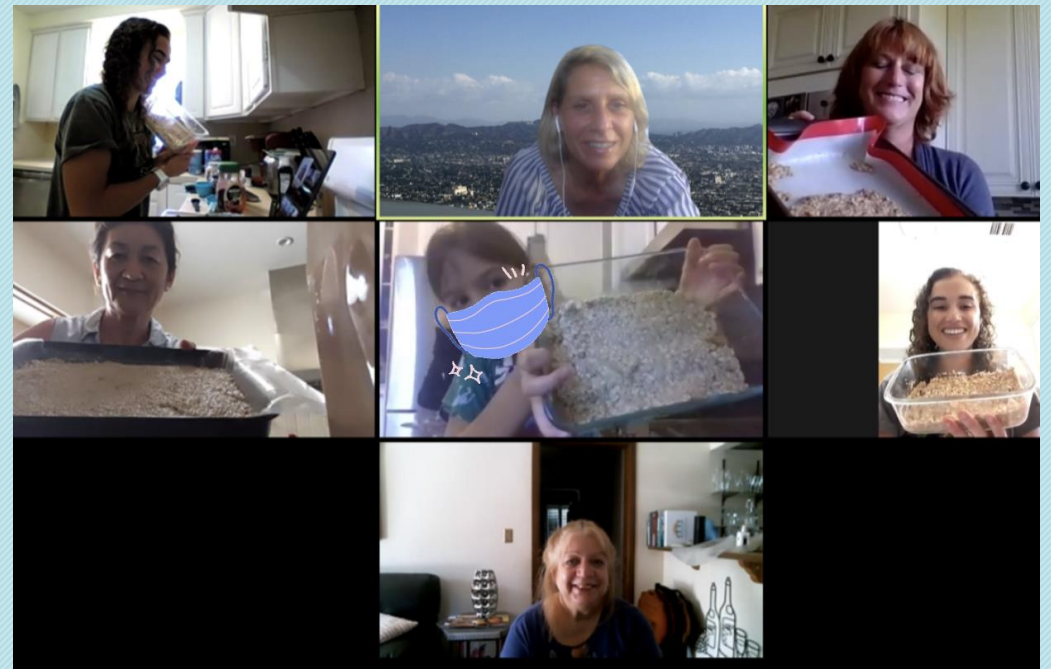
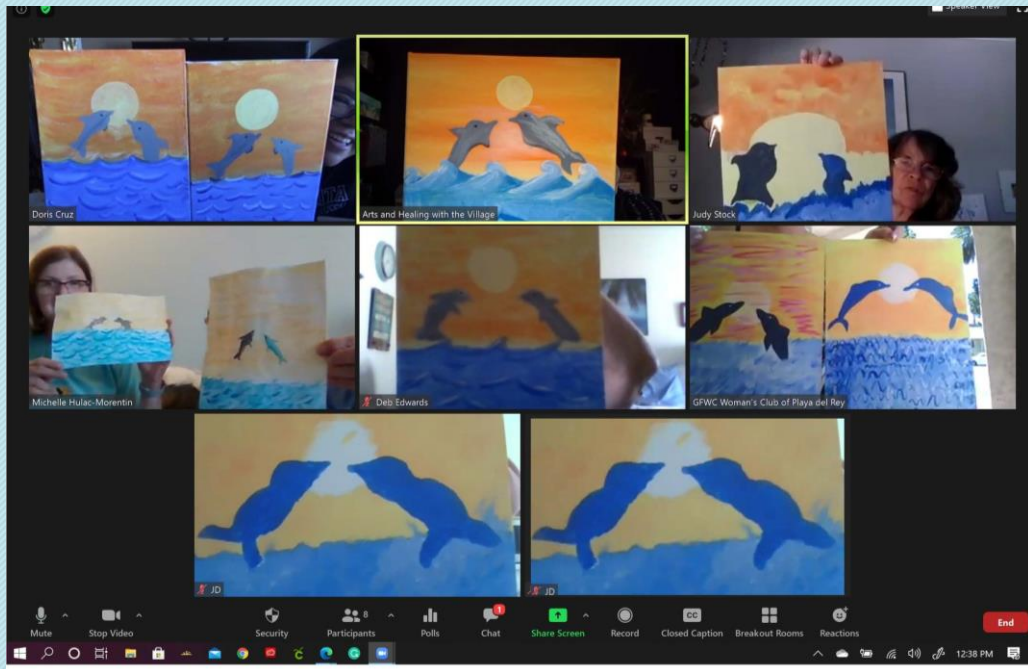
- Free program - Ran for 18 months

Shown a light on the needs of seniors



WPV Virtual Activities

Painting, Cooking, Tea & Chat,
Meditation, Senior Fitness, and more....



Special Care Package Deliveries

During WPV CARES Program, special care packages were delivered to seniors every week. Transitioned to monthly deliveries.

- Meals, fresh produce, flowers, PPE, baked goods, cards made by neighborhood children, other fun gifts
- Delivered to every client member as part of membership
- Donations and Sponsorship opportunities



Social Isolation and Loneliness

*Post- Pandemic will Remain
an Ongoing Issue for
Older Adults – Epidemic*



Health Impact

- 45% greater risk of death
- 59% greater risk of functional decline
- = smoking 15 cigarettes a day
- Increased stress and blood pressure
- Higher rates of depression and cognitive decline
- Increased vulnerability to financial fraud and exploitation

WPV's New Membership Fee Structure Effective 10-1-2021



**Volunteer opportunities
Flexible scheduling
Pick and choose
when/how to help**

WPV BASIC MEMBERSHIP SUPPORT AT HOME	+ EXTRA SERVICE ADD-ONS
For less than a dollar a day, WPV Membership provides access for adults 65 and older to social activities, limited support in/around the home and to help stay connected.	Some additional services outside the home can be provided at a low-cost, affordable, fee-for-service basis.
<ul style="list-style-type: none"> - Social Support Calls - Friendly Visits - Special Monthly/ Holiday Deliveries - Social Activities - Community Programs/Events - Light Chores - Technology Support - Service Referrals 	<ul style="list-style-type: none"> - Pickup & Delivery Services: \$5.00/ Errand* - Transportation: \$5.00/ One-Way Local Ride* (\$10.00 Local Roundtrip Ride) - + Extra Service Add-Ons and Longer-Distance Rides See attached guidelines for details.
<p>\$25.00/ Month or \$250.00/ Year when paid in one annual payment</p>	
<p><u>New WPV Cares Program</u></p> <p>WPV's COVID-19 emergency response (WPV CARES) program will transition to a new sliding-scale program to offer subsidized memberships to qualified low-income seniors</p>	

Questions??



It Takes A Village!



thewpv.org

info@thewpv.org | 310-695-7030

Like us www.facebook.com/westsidepacificvillages