



STATE OF CALIFORNIA Baldwin Hills  
Urban Watersheds Conservancy

## THE CONSERVANCIES AND WCB BRING DISTINCT VALUE TO OUR WORK.

### WHAT WE DO BEST...

- Protect and steward land in perpetuity
- Make it easier for all Californians to access and enjoy outdoor spaces
- Facilitate regional climate adaptation
- Deliver innovative projects with minimal green tape
- Make it easier for all Californians to access State funding and assistance
- Regionally integrate multiple state priorities
- Promote environmental awareness and education
- Help statewide legislators communicate with communities, cities, and counties
- Serve as an Employer of Choice with a diverse workforce

### OUR WORK RESULTS IN...

- Thriving people and communities
- Resilient landscapes
- Healthy wildlife and biodiversity
- Robust community and government relations

### WE ACCOMPLISH THIS THROUGH...

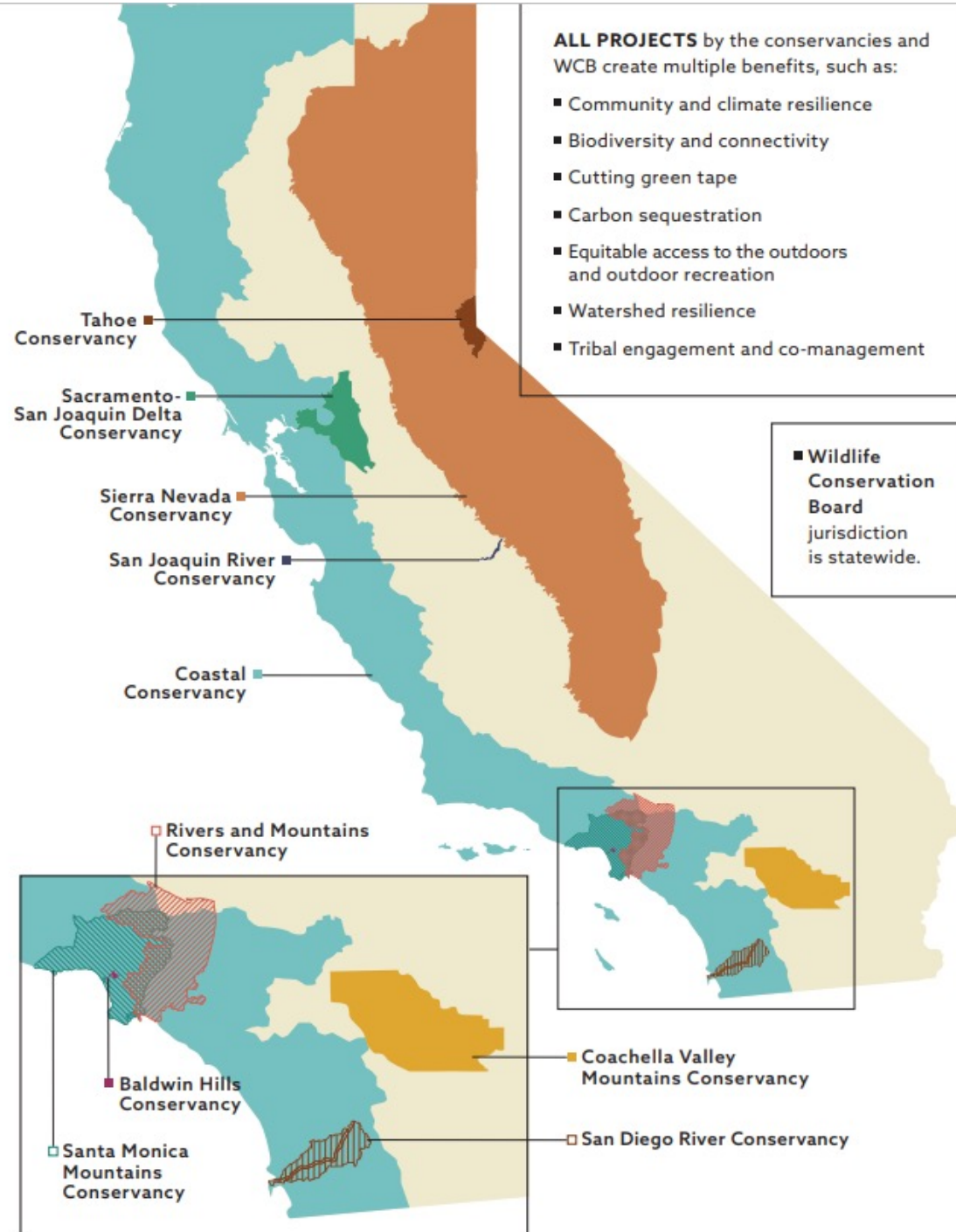
- Local knowledge and credibility
- Community engagement and collaboration
- Quick, nimble, and effective responses
- Capacity building, technical expertise, and innovation
- Boards that combine local and state representatives
- Partnerships and joint powers authorities, and innovative agreements

## OUR WORK



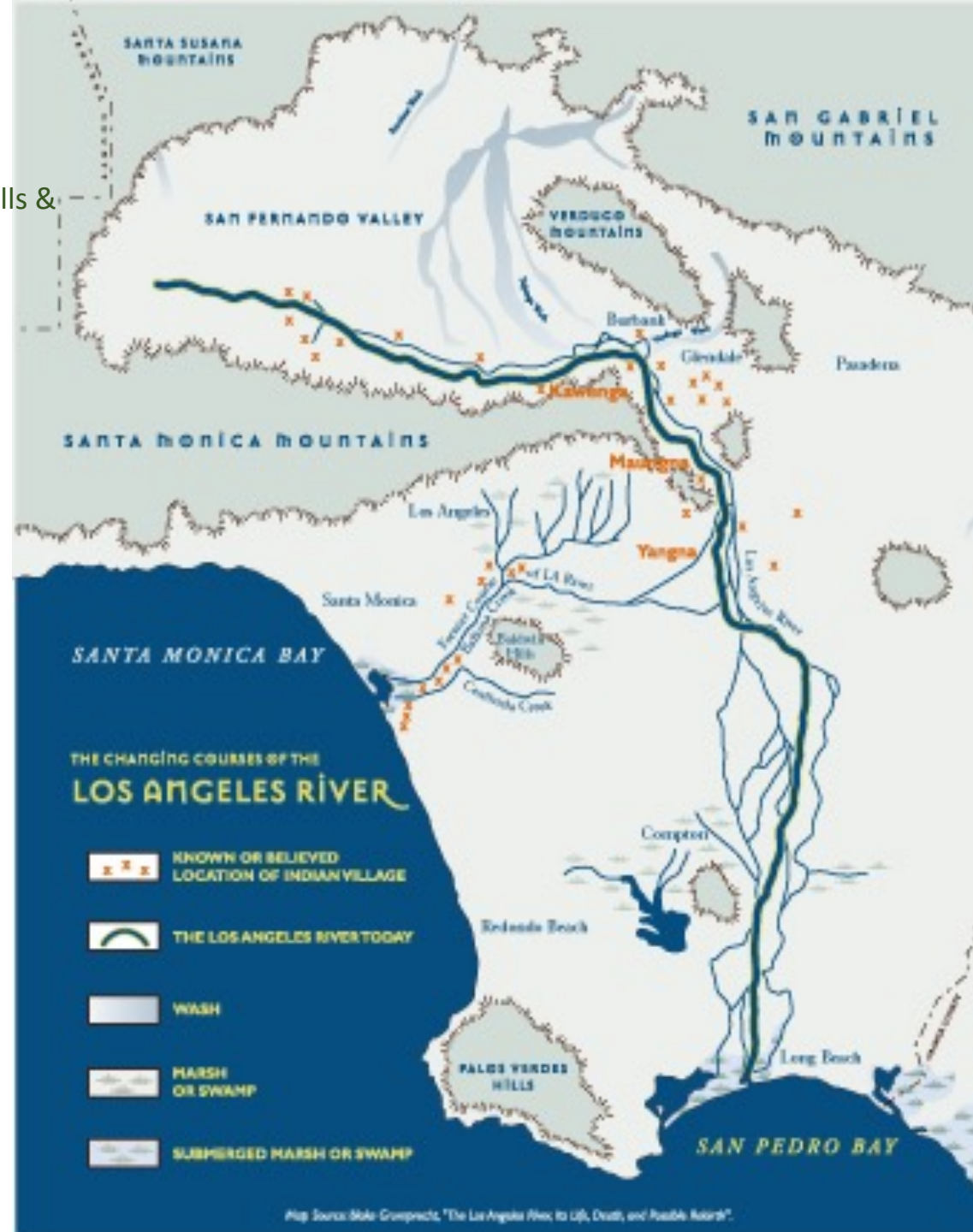


STATE OF CALIFORNIA Baldwin Hills  
Urban Watersheds Conservancy





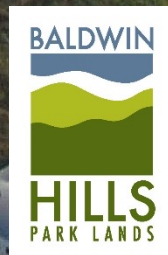
STATE OF CALIFORNIA Baldwin Hills & Urban Watersheds Conservancy



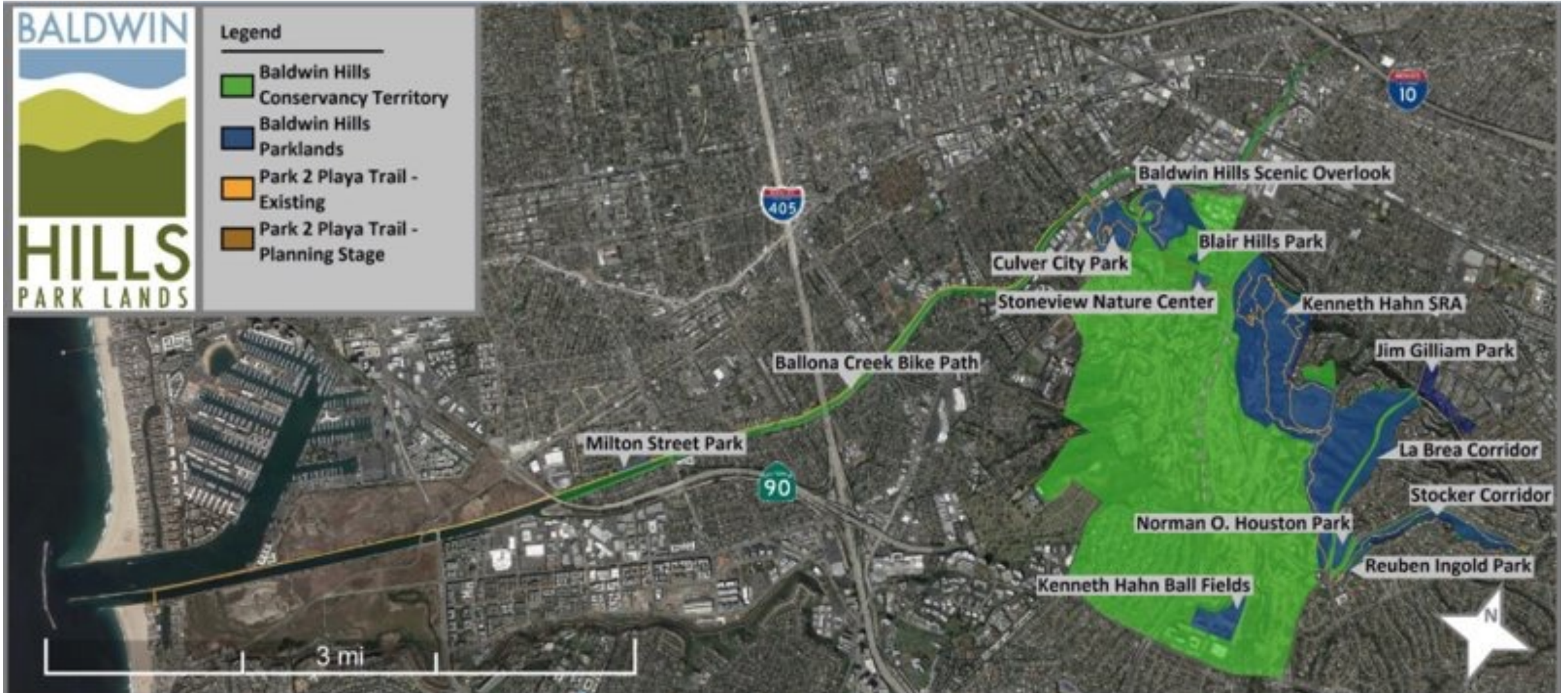
# Brownfields



# Transformation of Land



# PARKLANDS TERRITORY



# ONE BIG PARK VISION



MIA LEHRER  
- ASSOCIATES  
landscape architecture

Concept Illustrative  
Baldwin Hills Park Los Angeles, CA



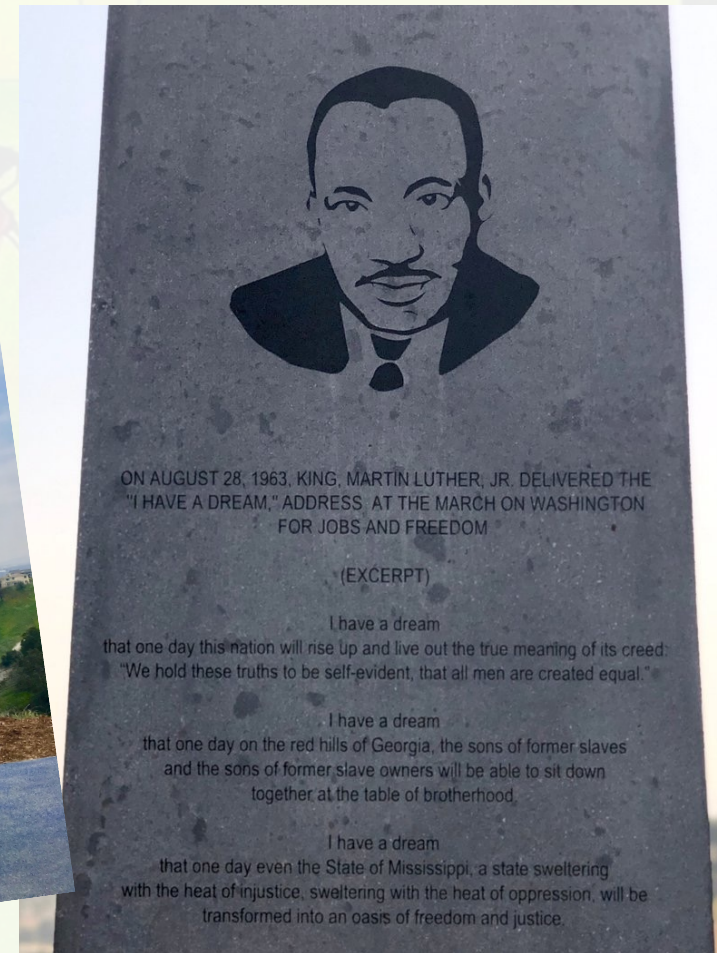
# Baldwin Hills Scenic Overlook and Stairs

[hikespeak.com](http://hikespeak.com)





# Martin Luther King Jr. Memorial



ON AUGUST 28, 1963, KING, MARTIN LUTHER, JR. DELIVERED THE "I HAVE A DREAM," ADDRESS. AT THE MARCH ON WASHINGTON FOR JOBS AND FREEDOM

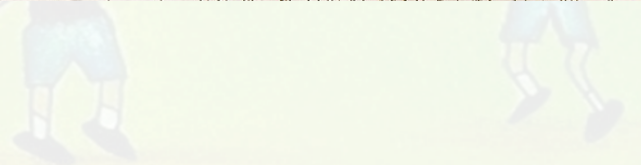
(EXCERPT)

I have a dream  
that one day this nation will rise up and live out the true meaning of its creed:  
"We hold these truths to be self-evident, that all men are created equal."

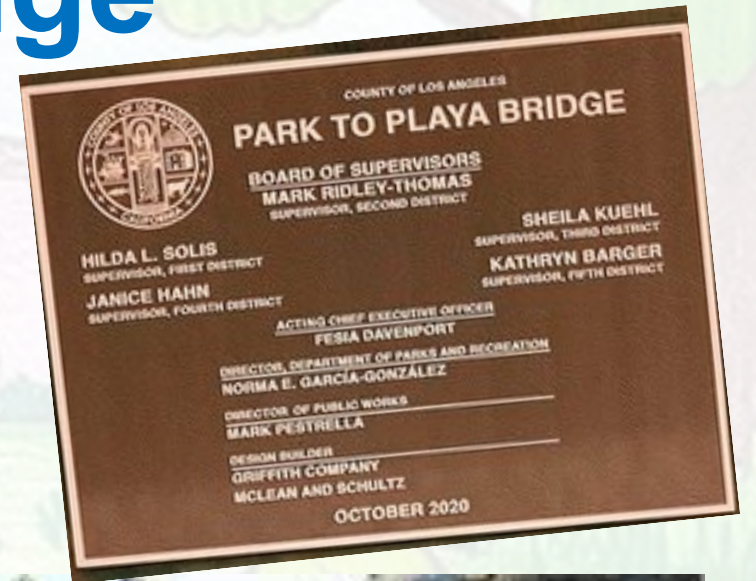
I have a dream  
that one day on the red hills of Georgia, the sons of former slaves  
and the sons of former slave owners will be able to sit down  
together at the table of brotherhood.

I have a dream  
that one day even the State of Mississippi, a state sweltering  
with the heat of injustice, sweltering with the heat of oppression, will be  
transformed into an oasis of freedom and justice.

# Stoneview Nature Center



# Park to Play Bridge



# Park to Playa Trail



# Milton Green Street





# CONSERVATION STUDIES

**Class Number:**  
**27520 AND 27522**



Earn our Conservation Studies Certificate of Completion:

- Gain experience in conservation, social advocacy, environmental education, and more!
- Be eligible to apply for paid seasonal positions with Los Angeles Audubon Society

**Courses Include:** (Both courses will be held online)

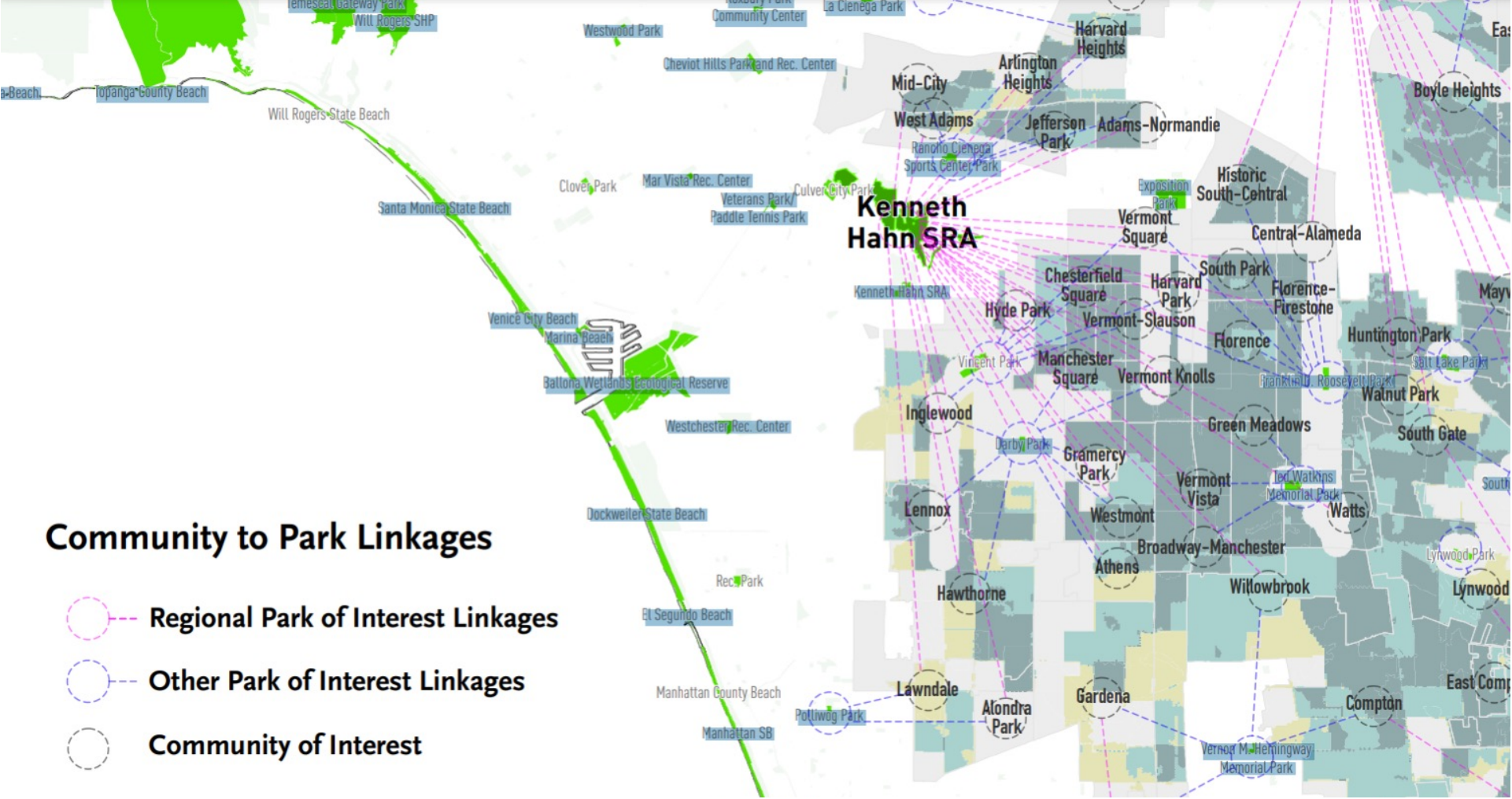
- VOC ED 222CE: Conservation Instruction (Spring 2021)
- VOC ED 223CE: Conservation Service Learning (TBD)



**Spring 2021 Schedule:**  
**VOC ED 222CE- 02/25-06/03; 9am-10:30am (THURSDAYS- SYNCHRONOUS) AND asynchronous lab**  
**To LEARN MORE and ENROLL, join us on:**  
**Thursdays, January 21st or 28th at 9am**  
<https://laccd.zoom.us/j/98299074743>  
**Meeting ID: 982 9907 4743**



This **FREE**, non-credit course is open to WLAC students AND community members!  
Contact the Course Instructor for details:  
cobarev@laccd.edu • (323) 632-0441  
@wlacccpd &  
@wlac\_conservation



Lack of transportation access is routinely listed as the number 1 or 2 barrier to getting to public parks and open space in the LA region.

# MEET LA



## RAIL TO RAIL/RIVER ACTIVE TRANSPORTATION CORRIDOR



### Project Overview

- >> 10.6 miles from Inglewood to LA River
- >> Convert an existing, underutilized railroad right-of-way (ROW) into a multi-purpose active transportation corridor

### The Project will facilitate:

- >> New east-west pedestrian and bicycle linkages
- >> Connection to multiple Metro and muni bus lines and three major north-south Metro transit lines:
  - Blue Line
  - Silver Line (BRT)
  - Crenshaw/LAX Transit Line (under construction)
- >> Community investment



# DESIGN CONCEPT

## What We've Heard from Community

Community Recommendations	Team Response
Wider walking path	7' path accommodates groups of travelers of different abilities, and those with pets
Consistent location	Walk path consistently on south side in between Opportunity Sites
Shaded path	Sun/shade study confirmed trees can shade walk path for most of day
Comfort	Light colored walk path reduces heat; more places to sit
Separate pedestrians and bicyclists	Painted buffer or planted bioswale will separate the two paths
Minimize conflicts	Signage, striping and mixing zone design will clearly direct flow

## Mid-block Design

- Asphalt paved walkway and 2 way bike path with painted markings and buffers
- Regularly spaced lighting along entire path
- Fencing at ROW edge where needed (36" non-standard panels)
- Furnishings & signage
- Benches for stormwater runoff treatment
- Shade trees
- Diversity of tree/plant species
- Benches and low, drought tolerant landscape in street buffer



Existing photo of Slauson street in San Pedro. (Note: 36" non-standard panels 10' from building face in ballast area)



Example of bioswale used to pedestrian path (Shelburne Ave in Van Nuys, CA) | Painted paths with buffers along Expo Bike Path



View looking West | Note: 2' painted buffers will be provided between walk and bike path and adjacent uses

## Mixing Zone Design



Existing photo of Slauson/Compton intersection



**MIXING ZONES ALONG SLAUSON CORRIDOR - 30' RIGHT OF WAY**  
 - continental crosswalk on Slauson Corridor  
 - 50' mixing zone at non-bus stop corner  
 - 100' mixing zone at bus stop corner  
 - shade trees & furnishings at bus stop corner



**MIXING ZONES ALONG SLAUSON CORRIDOR - 40'+ RIGHT OF WAY**  
 - continental crosswalk on Slauson Corridor  
 - 50' mixing zone at non-bus stop corner  
 - 100' mixing zone at bus stop corner  
 - shade trees & furnishings at bus stop corner  
 - diverted island where ROW is 40'+



Example of divider island with drought tolerant flora

## Shade & Lighting



## Emergency Phones



Blue emergency phones will be used in the Hybrid Path segment between Slauson and 11th Avenue.



# Los Angeles Countywide Parks and Recreation Needs Assessment

Park acre need is based on the number of park acres available in a given Study Area. The fewer park acres available in a given Study Area, the greater the park acre need. This analysis included all local parks, regional recreation parks, and regional open space and was calculated by assigning a park service area to each existing park, based on the acres of the park and using the Department of Parks and Recreation service area standards as a guide.

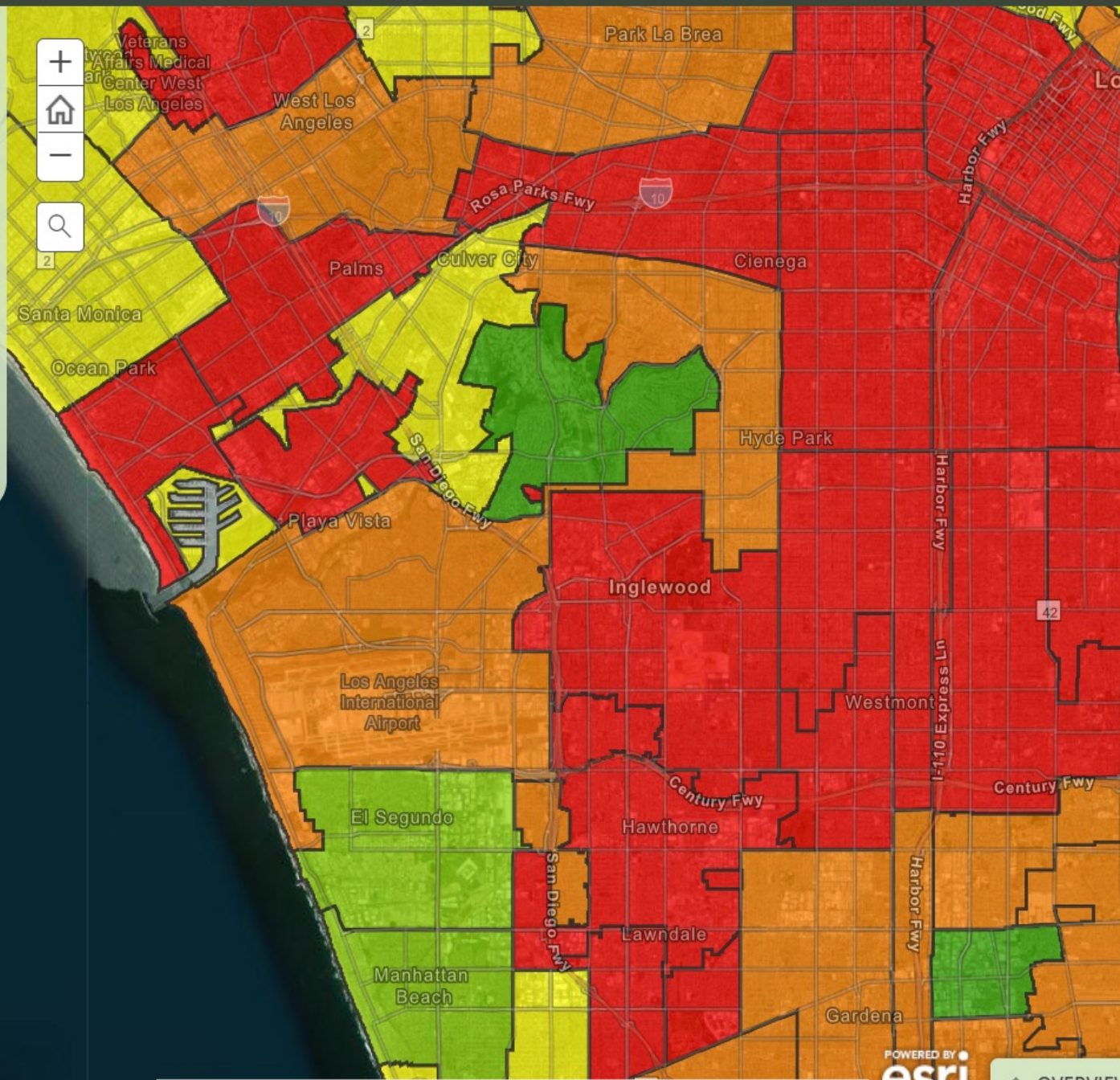
> **Zoom to any location in the County to assess the number of park acres available from that location.**

## 2 DISTANCE TO PARK

Distance to a park measures how far a given household is from a park. This analysis included local parks, regional recreation parks, and regional open space. Households the greatest distance from a park have the least park access, and those closest to a park have the most park

Park Need - Summarized by Study Area

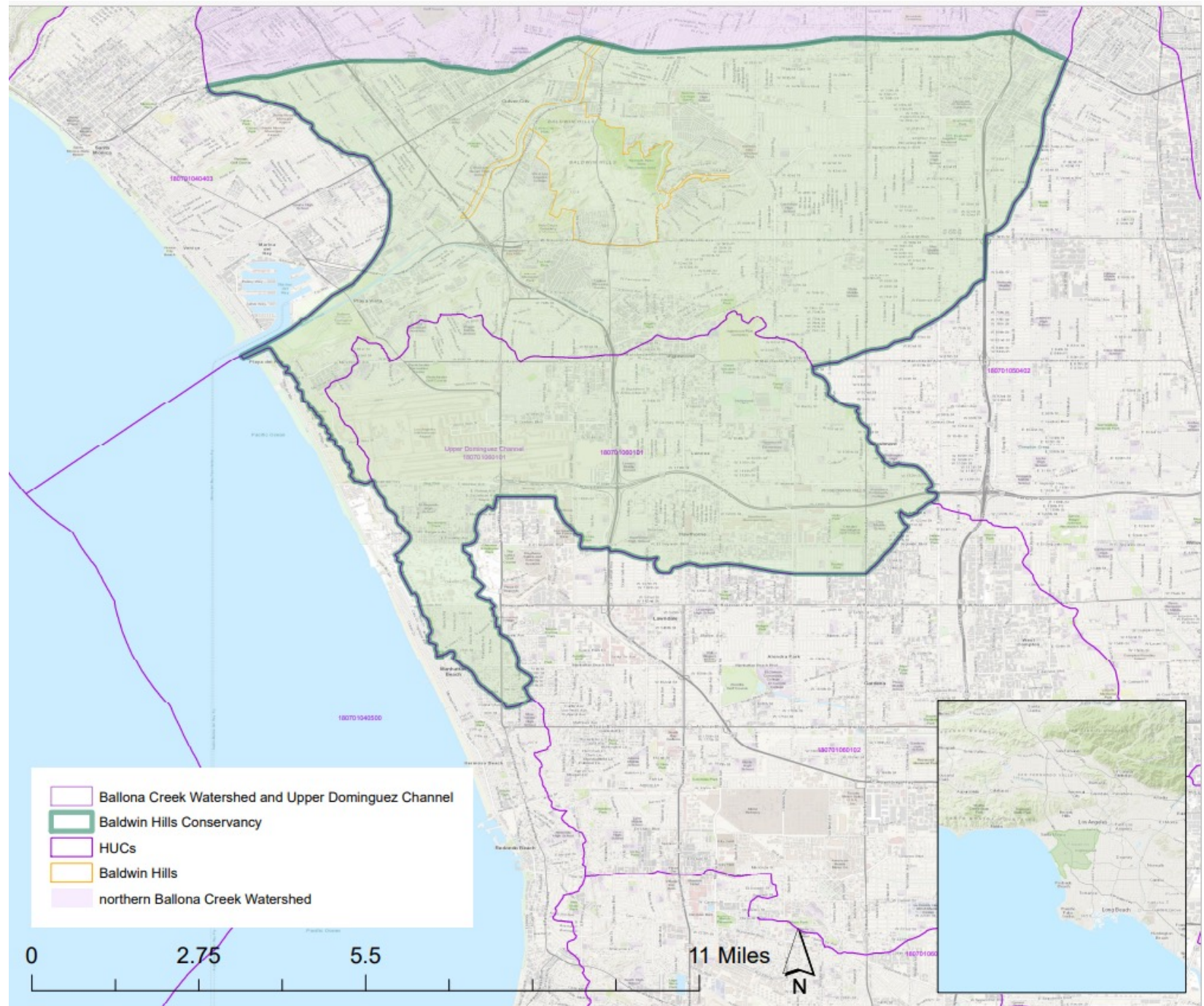
- Not Participating
- Very Low
- Low
- Moderate
- High
- Very High





STATE OF CALIFORNIA Baldwin Hills & Urban Watersheds Conservancy

The new expansion approved by the Governor and Legislature places a dedicated Conservancy in the heart of the most densely populated urban county in California beginning on January 1, 2023. With an average of nearly 14,000 people per square mile, the new territory holds several key legislative districts, cities and portions of unincorporated county that can now receive direct access to innovative watershed-based grant programs and resiliency services offered by the State.



- Current Baldwin Hills Conservancy Boundary 2,126 Acres
- Future Baldwin Hills Conservancy Boundary 45,518 Acres
- Senate Districts
- Assembly Districts



**Communities & Agency Partners**

**Baldwin Hills Regional Conservation Authority**

**California Geologic Energy Management Division**

**California State Parks**

**City of Los Angeles Department of Recreation and Parks**

**City of Los Angeles Public Works Board**

**Coastal Conservancy**

**Crenshaw District**

**Culver City**

**Culver City Department of Parks, Recreation and  
Community Services**

**Del Aire**

**El Segundo**

**Hawthorne**

**Inglewood**

**Inglewood Department of Parks and Recreation**

**Jefferson Park**

**Lennox**

**Los Angeles County Department of Parks and Recreation**

**Los Angeles County Department of Public Works**

**Los Angeles World Airports**

**Manhattan Beach**

**Rivers and Mountains Conservancy**

**Santa Monica Mountains Conservancy**

**South Bay Cities Council of Governments**

**South LA**

**West Adams**

**West Athens**

**West Basin Municipal Water District**

**Westmont**

**Other Institutions and Landmarks**

**Baldwin Hills**

**Ballona Creek**

**Ballona Wetlands**

**Dominguez Channel**

**Exposition Park**

**Hawthorne Airport**

**Hollywood Park**

**Intuit Dome**

**SoFi Stadium**



Confluence of Ballona Creek and Sepulveda Channel shows degraded landscape and poor water quality, as well as the potential for high-quality recreation.



Aerial photo shows the proximity of Mar Vista Gardens to the Creek Trail and beach.

The desolate grey infrastructure that covers much of southwest LA County is **unwelcoming** **unimproved** and **unacceptable.**



**Ballona Wetlands ER**  
**Visitor Areas and Information**

Data Source: CDFW Data Portal

**2019 Ballona Wetlands ER Visitor Counts**

	Students Served	Volunteer Hours	Field Trips/Events	Volunteers
Friends of Ballona	7070	7410	143	2964
LA Audubon	2363	1564	44	-
Bay Foundation	-	204	12	102
<b>Totals</b>	<b>9433</b>	<b>9178</b>	<b>199</b>	<b>3066</b>

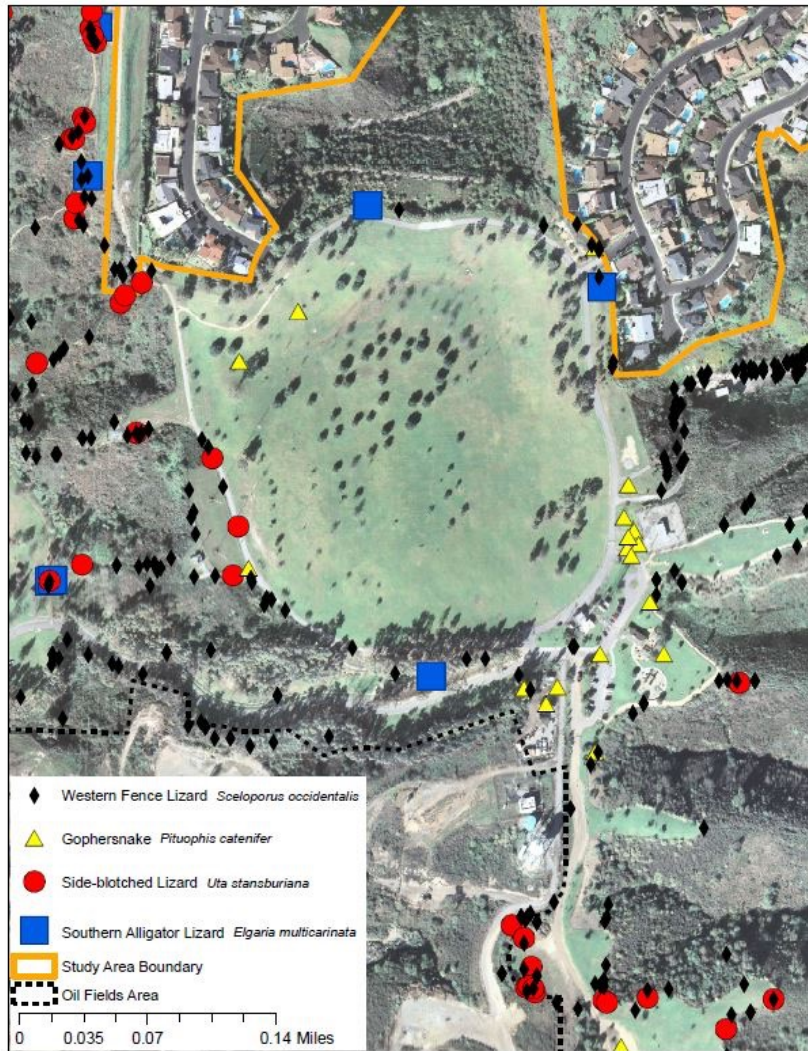


Figure 3-10. Location of snake and lizard observations around large expanses of lawn at Kenneth Hahn State Recreation Area.

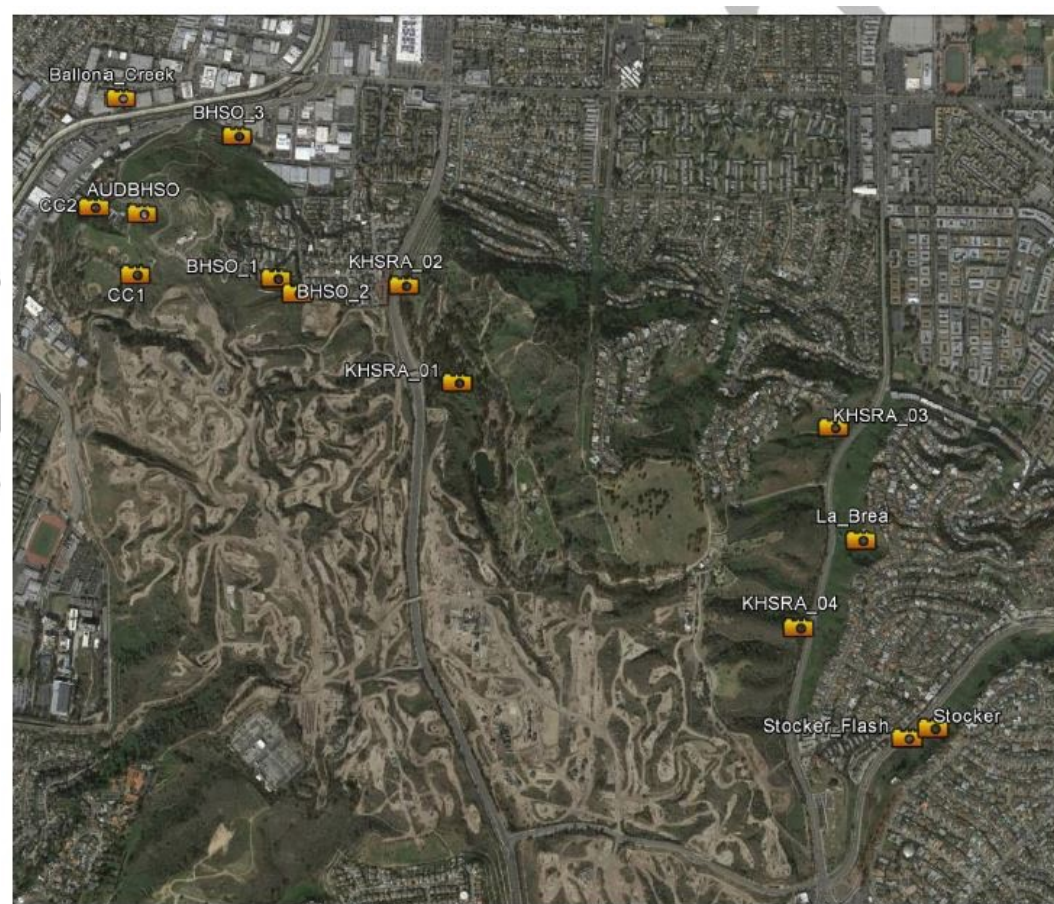


Figure 5-1. Locations of trail cameras deployed in the Baldwin Hills and vicinity.



Figure 5-2. Typical camera top deployment at optimal height (approx. 30 cm) for activation by medium-sized mammals.



Restoration Map    New    Login

Refresh    Delete    Edit    Download

- Useful Layers
- Monitoring Data
- Habitat Restoration

The image shows a web-based geo-spatial portal for Baldwin Hills. The main view is an aerial photograph of a residential area with a grid overlay. A sidebar on the left contains navigation buttons (Refresh, Delete, Edit, Download) and a layer control menu with three items: 'Useful Layers', 'Monitoring Data', and 'Habitat Restoration'. Below the sidebar is a gallery of 22 numbered photographs of various plants and trees, likely native to the area. The photos are arranged in a grid-like fashion, with some overlapping. The numbers range from 1 to 22. The background map shows a mix of urban development and green spaces, with a prominent road and a large green area in the center.

# Biota



## Baldwin Hills Biota

### Stats






Totals

**959**  
Observations »

**256**  
Species »

**50**  
People »






Most Observations

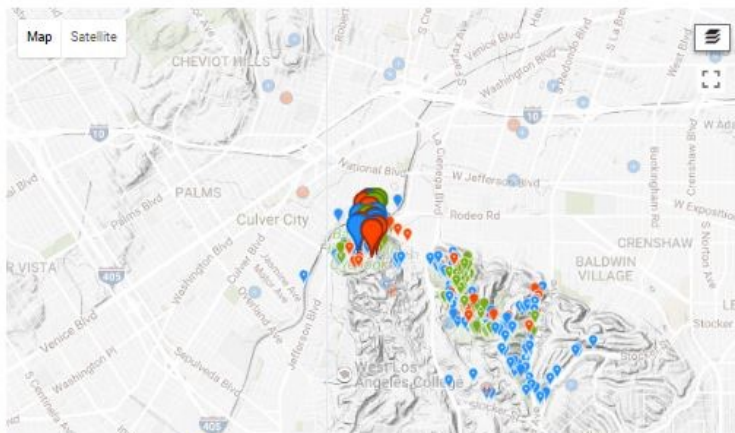
-  **cedric\_lee**  
181 observations
-  **steviegold**  
176 observations
-  **ctwothree**  
117 observations
-  **quantron**  
88 observations
-  **thealetter**  
44 observations

Most Species

-  **cedric\_lee**  
118 species
-  **quantron**  
52 species
-  **steviegold**  
27 species
-  **ctwothree**  
25 species
-  **nhmordenana**  
23 species

Most Observed Species

-  **Western Fence Lizard**  
97 observations
-  **Gopher Snake**  
65 observations
-  **Southern Alligator Lizard**  
36 observations
-  **Common Side-blotched Lizard**  
35 observations
-  **Milk Snail**  
16 observations




» **Members** 59 members



[View all members »](#)

» **Export observations**



### About

The Baldwin Hills are found in urban Los Angeles, between Culver City and Inglewood, with sweeping views across the entire Los Angeles Basin. They are an island of natural and modified habitats in the middle of the city. Part of the area is in parkland and a significant portion is used for oil and gas