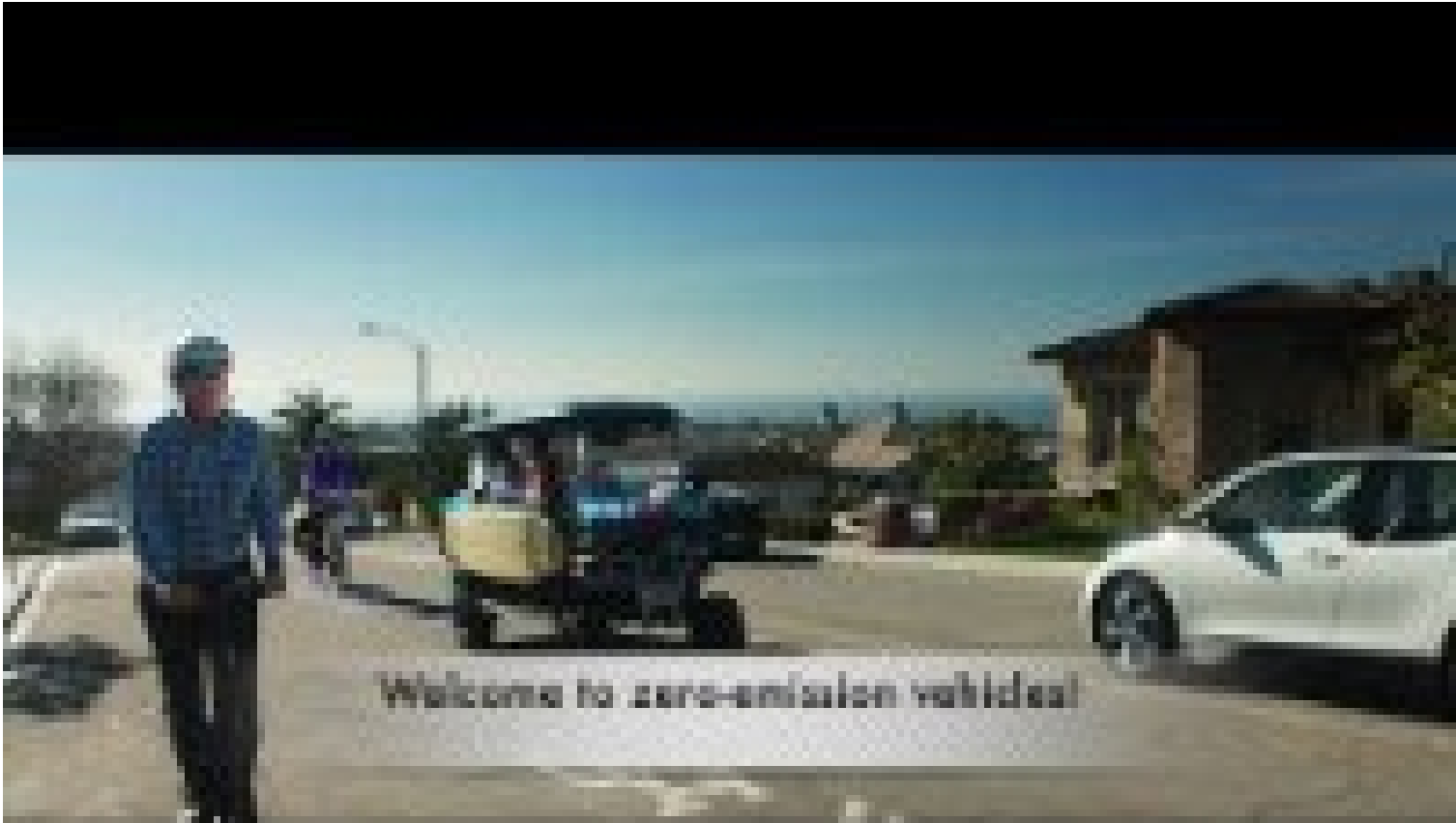


# Support Growing Market of Micro-Mobility Devices



# Local Travel Network: Steps Towards Implementation

Senior Services Working Group  
December 6, 2022



# Foundational Planning & Research: 20 Years

- Climate Action Plans
- Adaptation Plans
- Vulnerability Assessments
- EV Adoption
- EVSC MUD & Proximity Siting
- Community Outreach

NEV and BEV  
Pilot Project



# Why a South Bay Local Travel Network...Why Now?

*Sustainability:*

*A Local Solution  
to Support  
Zero-Emission  
Mobility*

- 70% of all South Bay Trips are 3-miles or less
- 90% of all trips are under 10-miles or less
- *Right-Sizing Your Ride*
- Implementation of LUT Strategies for Climate Action Plans
- *Vision-Zero (Safety)*
- *Access: Mobility/Physically Challenged*
- *Infrastructure to support growing market of micro-mobility devices*

# What is the South Bay Local Travel Network?

*Connecting  
Neighborhoods  
to  
Neighborhoods  
to  
Destinations*

- A 243-mile route-network overlayed on the South Bay's 2,000 miles of streets
- To provide South Bay residents with safe and efficient routes to reach frequent destinations using zero-emission micro-mobility devices
- ***Slow-Speed Streets (mostly 25 mph)***
- ***Traffic signals to cross busy, fast-moving streets***
- Automobiles will share the roadway with micro-devices on the LTN without dedicated lanes – via a system of “sharrows”

***This IS about personally-owned vehicles***

***This is NOT about rental scooters***



# Infrastructure to Support the Growing Market of Micro-Mobility Devices





E-Bike  
Boom  
is Here!





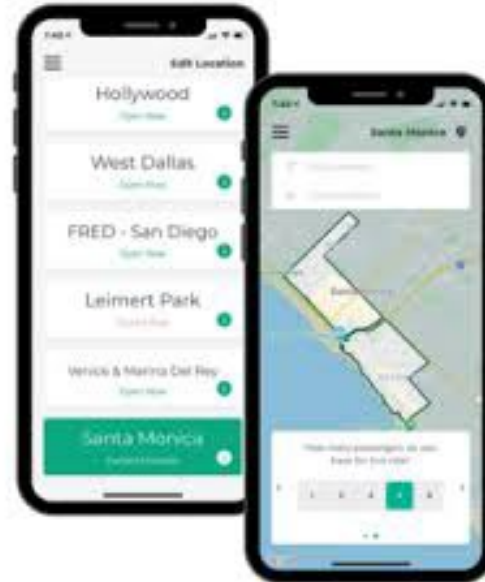
# Micro-Mobility as a Service





# Micro-Mobility as a Service for Seniors

- Shopping
- Doctor's Appointments
- Entertainment



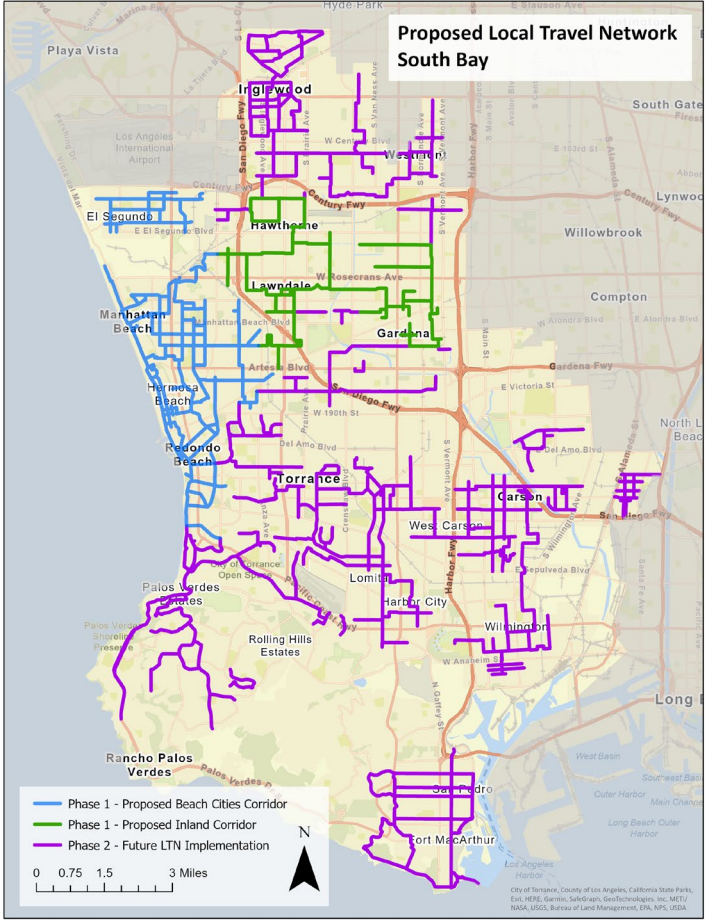
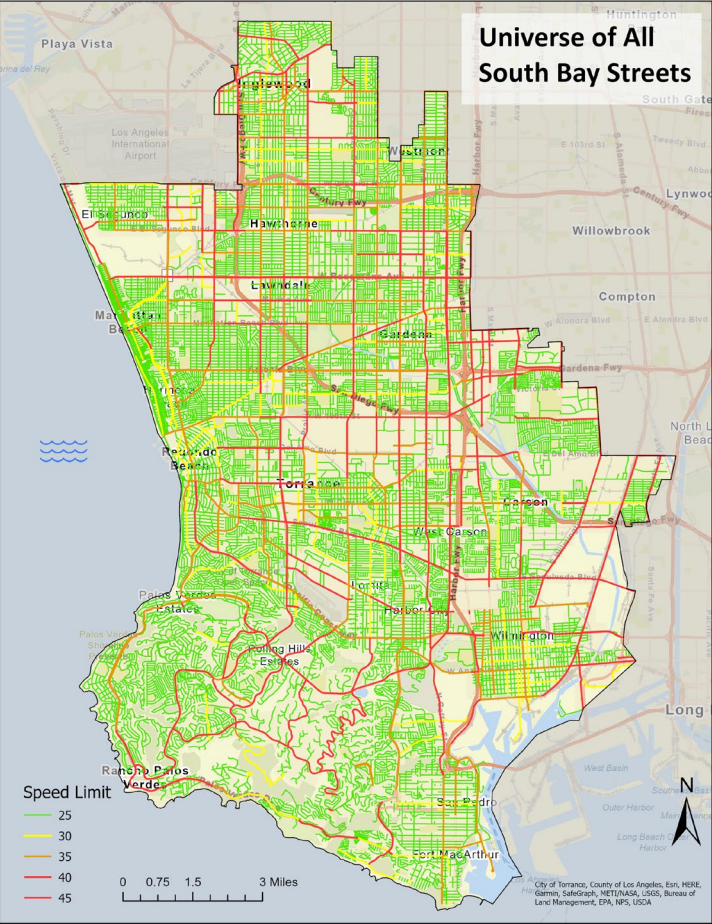


# LTN Infrastructure: Sharrows and Wayfinding

*Connecting  
Neighborhoods  
to  
Neighborhoods  
to  
Destinations*



# The South Bay Local Travel Network:



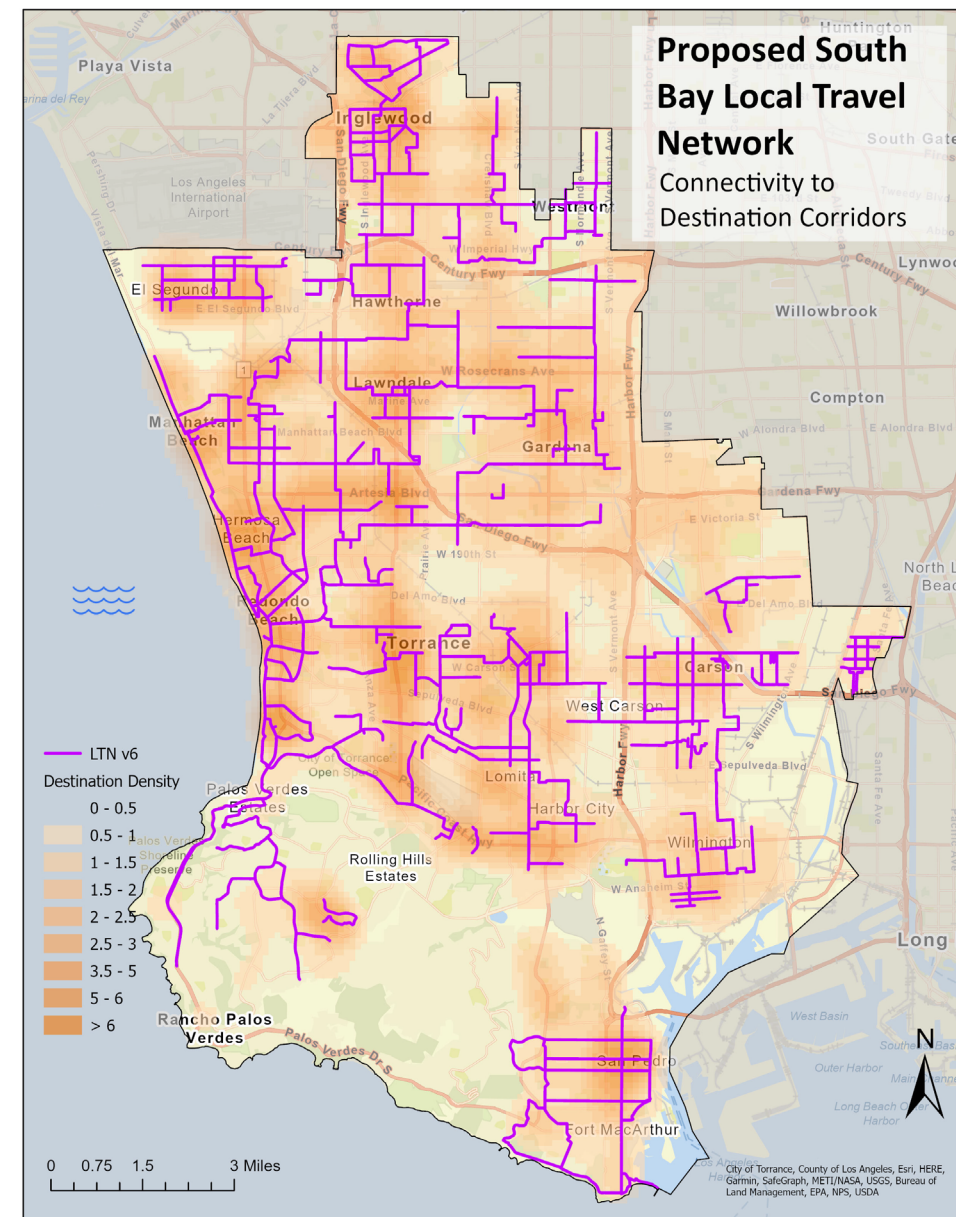


# Local Travel Network: Destinations Overlay

*“Connecting Neighborhoods to Neighborhoods to Destinations”*

*Crossings at Controlled Intersections:*

*Schools  
Employment Centers  
Recreational (Parks)  
Commercial*

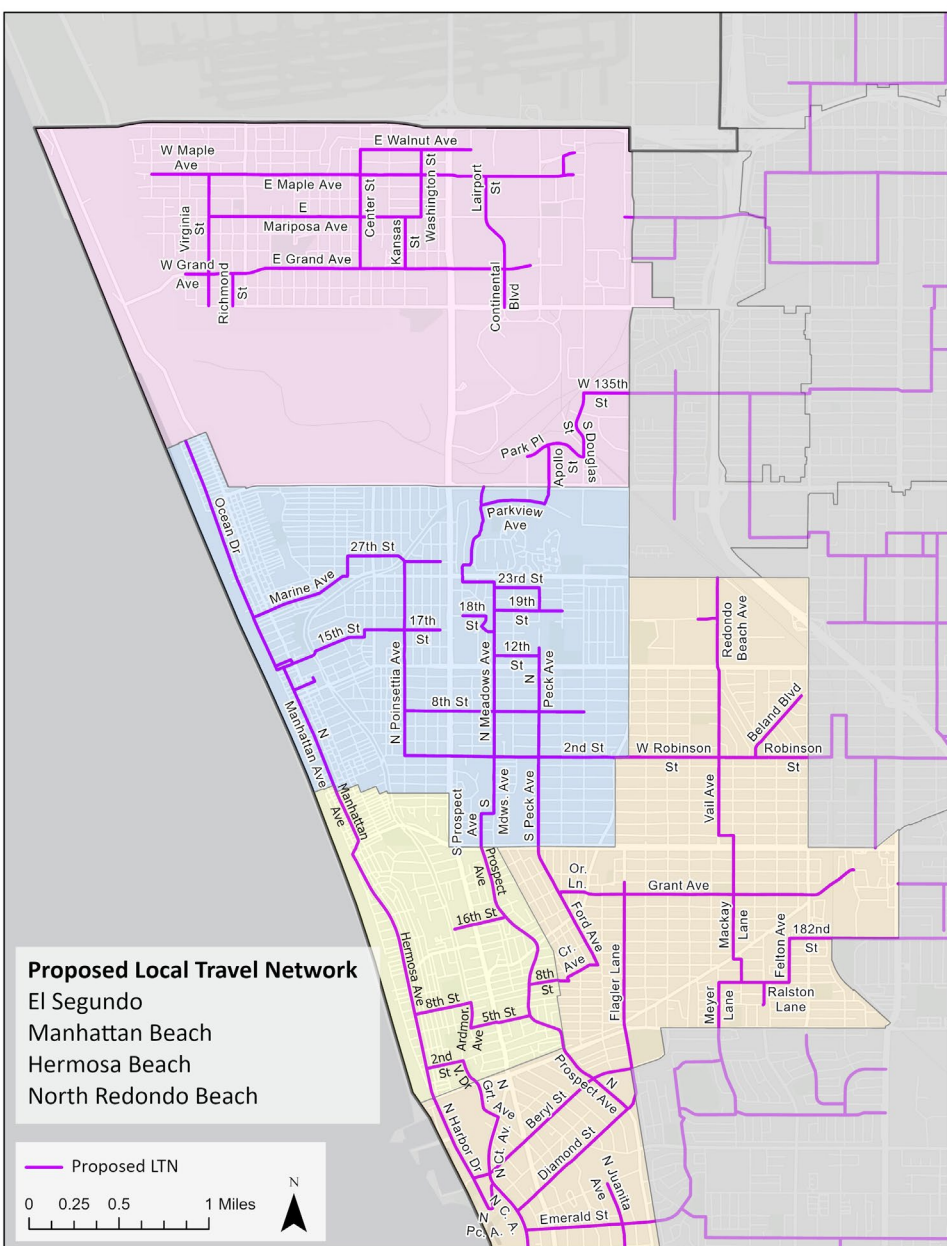




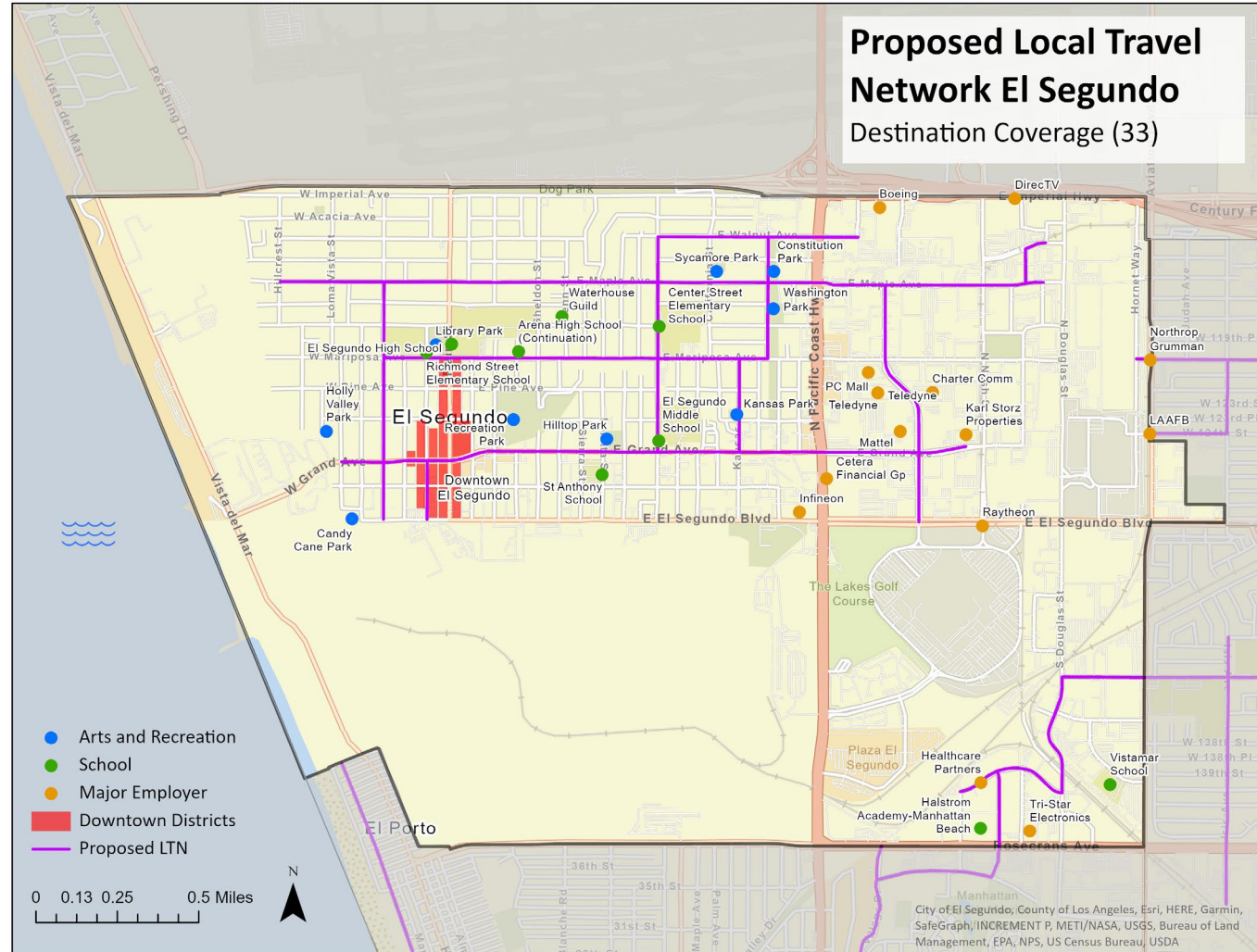
# Proposed Local Travel Network Beach Corridor

*“Connecting Neighborhoods to  
Neighborhoods to Destinations”*

*Crossings at Controlled  
Intersections*



# El Segundo: Proposed Routes for Implementation



# SBCCOG's Wayfinding Project

OPTION 3  
**Rolling Turtle**



# Working to Change the Culture of Mobility

- **Education**
- **Marketing**
- **Network Development**

**Ride & Drive Events  
Educational Events  
(Kids & Adults)  
Right-Size Your Ride Tool  
E-Bike Rebates**

**Additional  
South Bay  
Cities Join  
the LTN**

**LTN  
IMPLEMENTATION**



**SBCCOG + CITIES + VENDORS  
+ COMMUNITY STAKEHOLDERS**



## Next Steps:

- Become “Champions” of the LTN in Your City and Across the South Bay Region
- Become Involved with your City’s LTN Planning and Implementation Process
- Partner with the SBCCOG, the City, and other stakeholders on safety programs and mobility pilot projects
- Give Micro-Mobility a “Spin” and “Right-Size” Your Ride!

# QUESTIONS?

## Thank You!

Contact:

Aaron Baum, LTN Program Manager  
South Bay Cities Council of Governments

[aaron@southbaycities.org](mailto:aaron@southbaycities.org)

310 428-7581 (c)

