

# CivicSpark Project: Energy Efficiency

SBCCOG BOARD MEETING

---

THURSDAY, JULY 24, 2025



**SOUTH BAY CITIES**  
COUNCIL OF GOVERNMENTS

# CivicSpark Fellow: Kevin Truong

---



- Graduated from UCLA with a B.S. in Environmental Science and Minor in Environmental Systems and Society
- Desires to provide organizations with the tools and resources to operate more sustainably
- Previously a CivicSpark Fellow at LA County Public Works
- Fun fact: plays the piano and currently taking singing lessons



# Project Components

---

Greenhouse  
Gas Emissions  
Inventories

Energy  
Resilience  
Action Plans

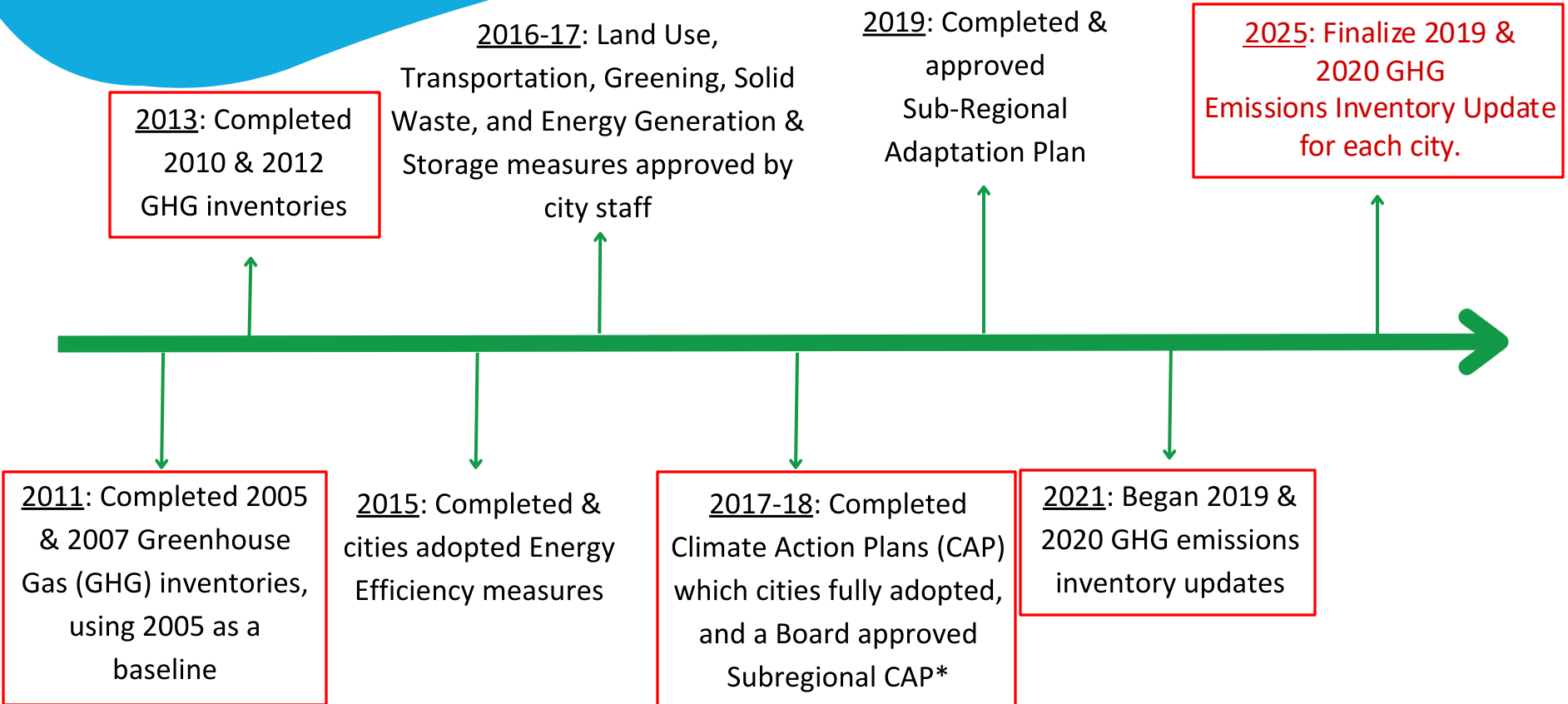
AB 802 Energy  
Benchmarking

Energy  
Management  
Working Groups

Recognition  
Program

GIS  
Contributions

# Climate Projects Timeline



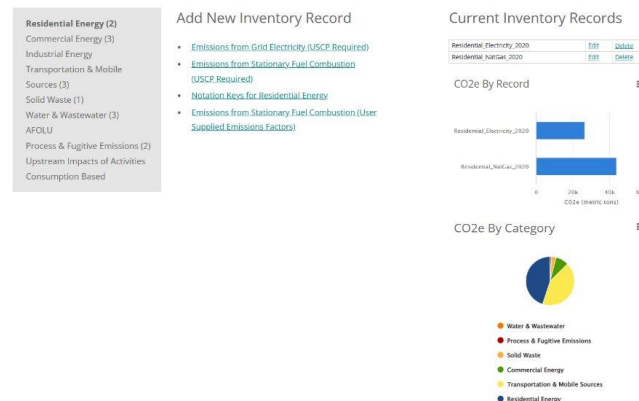
\*The SBCCOG Board uses this to help guide future projects



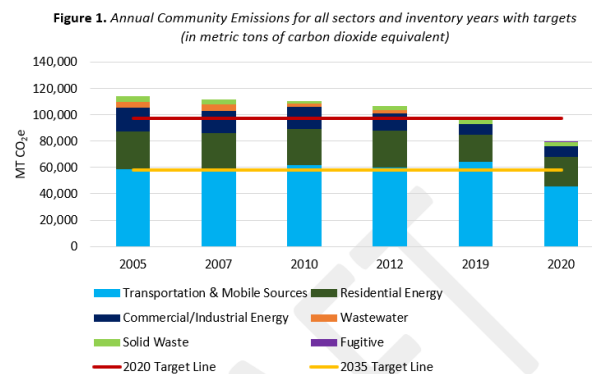
# GHG Emissions Inventories

## The Fellow:

- QC data on ICLEI ClearPath
- Drafted reports, finalizing report language and figures
- Conducted webinar plus additional presentations to brief city staff
- Distributed draft reports for review and incorporated city feedback into final reports



*example ICLEI ClearPath page*



*example figure from GHG inventory report*

## GHG Next Steps

Develop emissions forecasts

Update Climate Action Plans

Pursue grant funding and awards



# Energy Resilience Action Plan

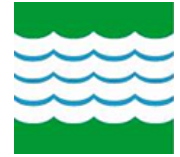
---



## **Energy Resilience Action Plan (ERAP):**

- Near- to long-term strategies to support community energy resilience
- A retrofit plan for transforming facilities into resilience centers for the community
- A robust collection of resilience planning resources and references.

SoCalREN program offering, currently in collaboration with the Cities of Gardena, Hawthorne, Lomita, Manhattan Beach



# Energy Resilience Action Plan

The Fellow supported data collection and coordination with SoCalREN and city staff on the following:

**Resilience Hub Opportunity Analysis (RHOA):** ranks facilities based on resilience hub potential and provides additional analysis for top 2 facilities

**Energy audits:** identify project opportunities for energy efficiency and resilience







# Energy Resilience Action Plan

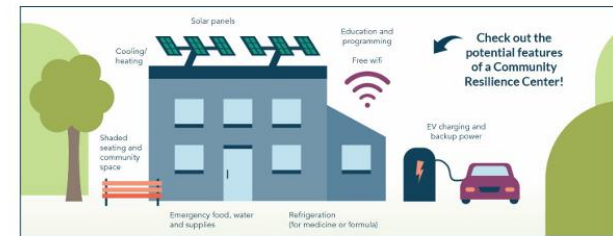
**Community outreach:** survey residents on desirable resilience hub locations and services of interest

Outreach methods: tabling, flyer drop-offs, newsletters, social media

210+ survey responses total (as of 7/23)



**TELL US WHAT YOU THINK!**  
Community Resilience Center Feedback Survey  
*Complete for a chance to receive an Energy Efficiency Gift Basket worth \$40*



A Community Resilience Center is a safe place that provides shelter and resources during climate and other emergencies, like a cooling center during a heat wave or power outage. Manhattan Beach is exploring opportunities for a Community Resilience Center and wants to hear from you about where it should be located and what services you would like to be offered there.

**1. Which of these locations would you like the city to develop as a Community Resilience Center? (Choose one)**

- a. Joslyn Community Center, 1601 N Valley Dr.
- b. Manhattan Heights Community Center, 1600 Manhattan Beach Blvd.



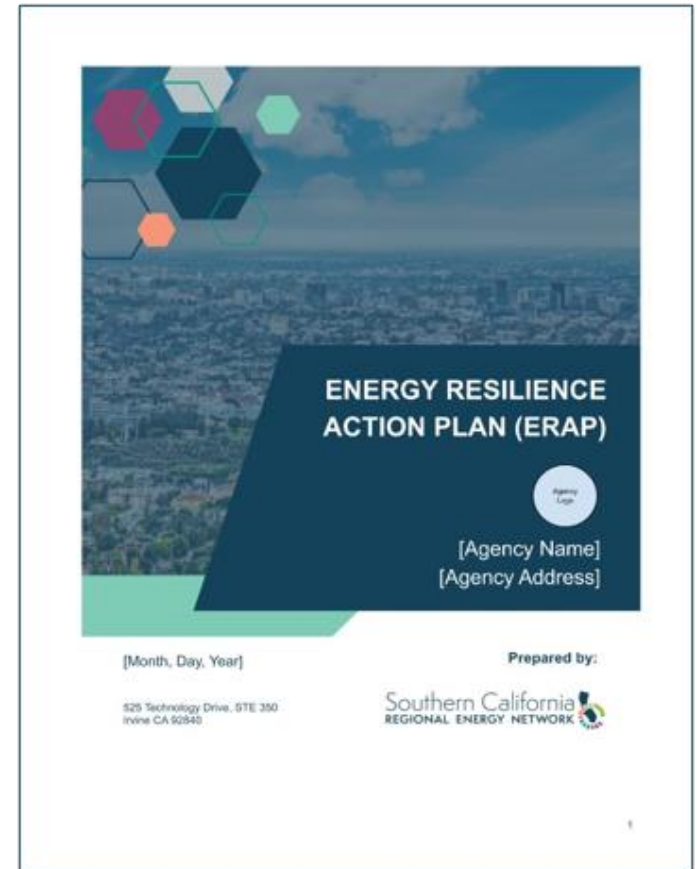
**2. How would you travel to this location during an emergency? (Choose one)**

- a. Drive
- b. Carpool
- c. Bike
- d. Walk
- e. Public Transit (Bus, Train)
- f. Other: \_\_\_\_\_



# ERAP: Next Steps

- Share results of energy audits and community surveys
- Work with SoCalREN to finalize ERAP reports





# AB802 Compliance

---

Building Energy Benchmarking Program (AB 802): owners of buildings greater than 50,000 ft<sup>2</sup> must submit annual reports to the California Energy Commission (CEC)

The Fellow worked with city staff to obtain missing utility data, review benchmarking reports, and submit to the CEC. **Completed benchmarking reports for 10 cities required to comply with AB 802.**



**Building Energy Benchmarking Program**

# Energy Management Working Groups

---



**Energy Management Working Group (EMWG):** quarterly meetings with city and school district staff to discuss facility improvements, energy efficiency programs, incentives, policies or regulations, and other updates.

The Fellow has coordinated 3 EMWGs – inviting staff, coordinating presentations, and compiling minutes.

- Q1: 11 agencies
- Q2: 7 agencies
- Q3: TBD

# 2025 South Bay Energy & Climate Recognition Program



The Fellow assisted with updating program guidelines for 2025, progress tracking/reporting, and engaging city staff.





# Q2 Report - (Jan - Jul 2025)

---

## Platinum Status

- Torrance – 36 points

## Gold Status

- Gardena – 23 points

## Silver Status

- Carson – 19 points
- Manhattan Beach – 17 points
- El Segundo – 12 points

## Bronze Status

- Lomita – 10 points
- Hermosa Beach – 7 points
- Hawthorne – 5 points

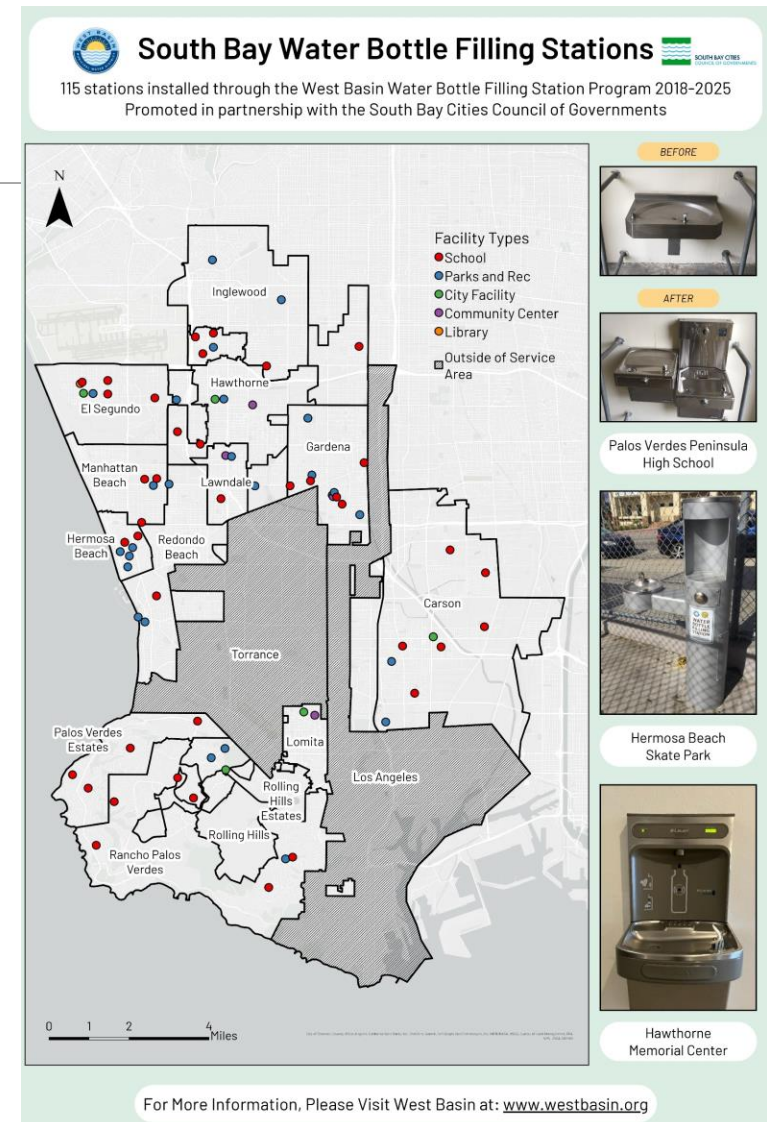
## In Progress

- Inglewood – 7 points
- Redondo Beach – 3 points
- Rolling Hills – 3 points
- Rancho Palos Verdes – 2 points
- Rolling Hills Estates – 2 points
- Lawndale – 1 point
- Palos Verdes Estates – 1 point



# GIS Contributions

- Created a poster showcasing installations of West Basin's Water Bottle Filling Station Program
- Supported archiving of SBCCOG StoryMaps



# Thank you!

---

