



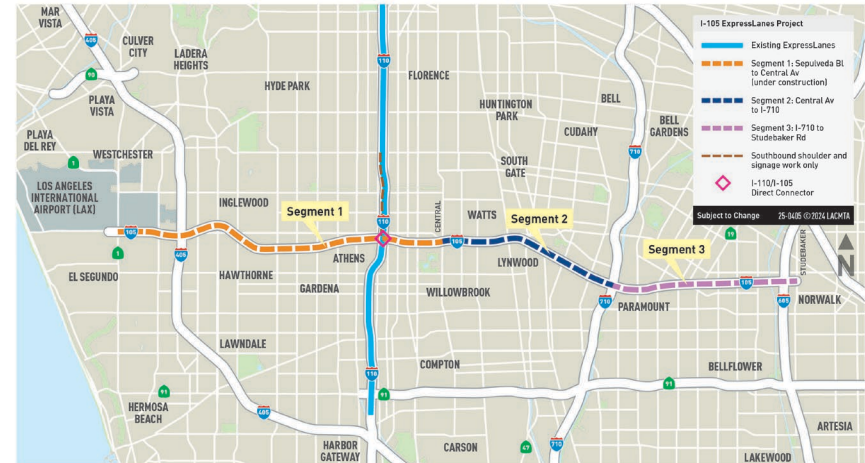
We're planning a better commute
on the 105.

Project Overview

- > Construction converting the existing I-105 HOV lane to two ExpressLanes in each direction between I-405 and Studebaker Rd
- > Provides more options, access, and connections for all users of the I-105 corridor
- > Segment 1 - currently under construction
- > Segments 2 and 3 - construction anticipated to start mid-2026
- > **No residential Right-of-Way impacts**
- > Is among the projects and improvements of Measure M that was supported and approved by LA County voters including voters in the project area



I-105 ExpressLanes Project Area



Project Overview: Benefits

- > **Addresses speed degradation** in the existing HOV lane that is operating at less than 45 mph during peak periods.
- > **Enhances operations and improves trip reliability and travel times** within the corridor for all motorists including HOVs, vanpools, commuters and transit service to LAX.
- > **Enhances highway safety** by addressing an auxiliary lane gap closure and by reducing stop and go traffic conditions, which will in turn reduce rear-end collisions.
- > **Addresses freeway overflow and congestion on local streets** by shifting vehicles in local area streets back onto the freeway, **improving livability for corridor residents.**

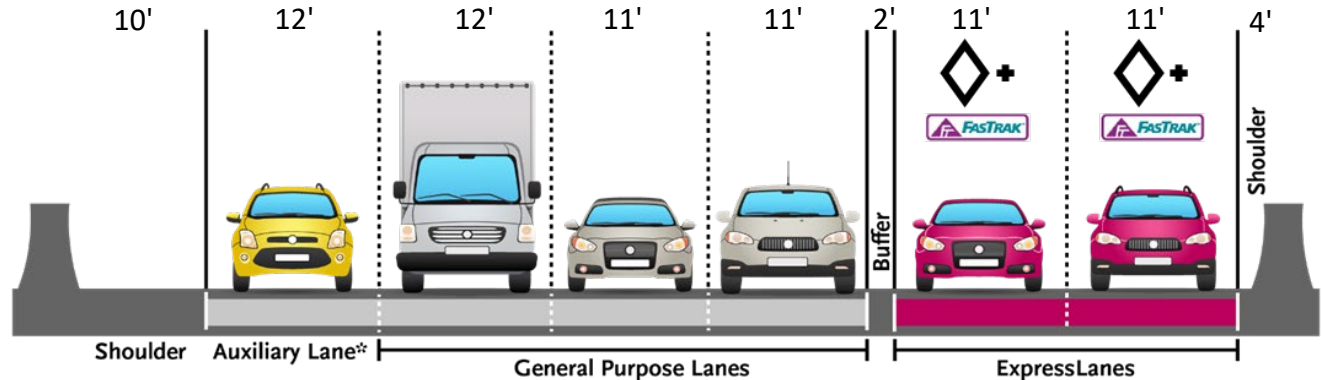
Additional Project Improvements

- > New and reconstructed soundwalls (most with increased height)
- > Seismic retrofit of the Alameda Viaduct
- > Multimodal Improvements:
 - The project will **provide funding for improvements at Harbor and Avalon C line stations**, such as lighting, wayfinding, and repair/rehabilitation projects
 - Future net toll **revenue will be used to fund active transportation, transit, and roadway projects** in the local community along the project alignment

I-105 Freeway New Lane Configuration and Dimensions

The project will utilize non-standard lane and shoulder widths:

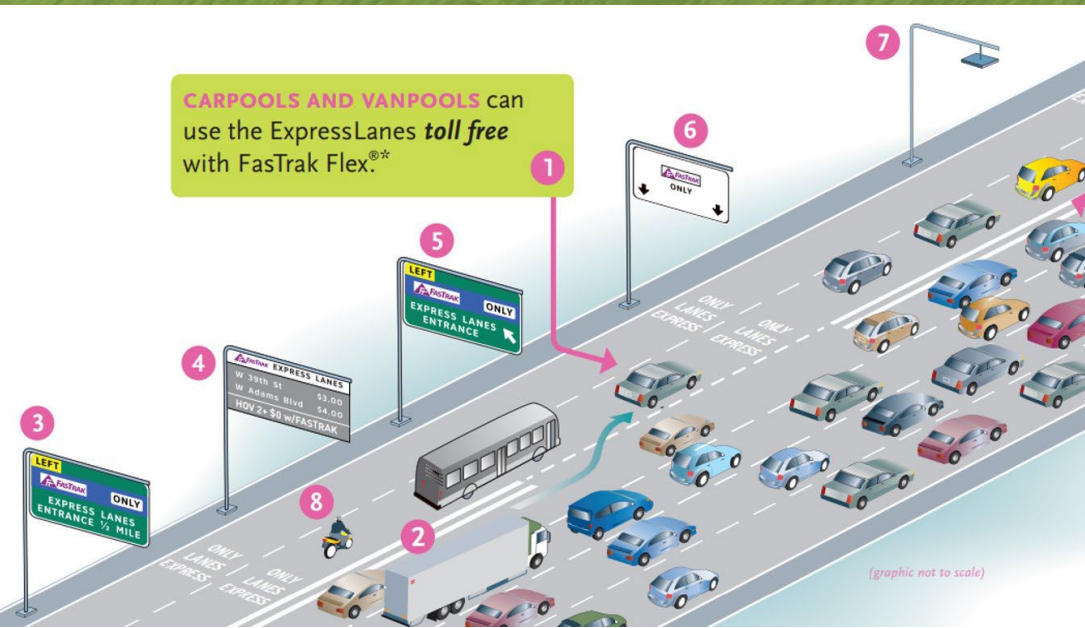
- 11 ft. ExpressLanes
- two 11 ft. GP lanes, one 12 ft. GP lane
- 4 ft. left shoulder
- 2 ft buffer between ExpressLanes and GP lanes



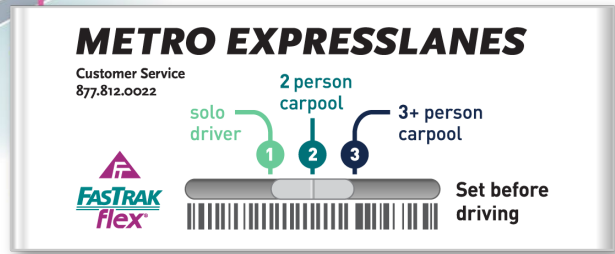
New lane dimensions in feet



How ExpressLanes Work



- Metro ExpressLanes program features:
- ✓ Transit Benefits/Rewards
 - ✓ Low Income Assistance Plan
 - ✓ Choices for Solo Drivers
 - ✓ ExpressLanes revenue reinvestment
 - ✓ For more information, please go to Metroexpresslanes.net



- ExpressLanes users enter/exit at designated locations
- Qualified carpools travel toll-free (with a transponder); switchable transponder must be used to receive carpool discount
- Vehicles can use the ExpressLanes without a transponder but pay \$9+toll



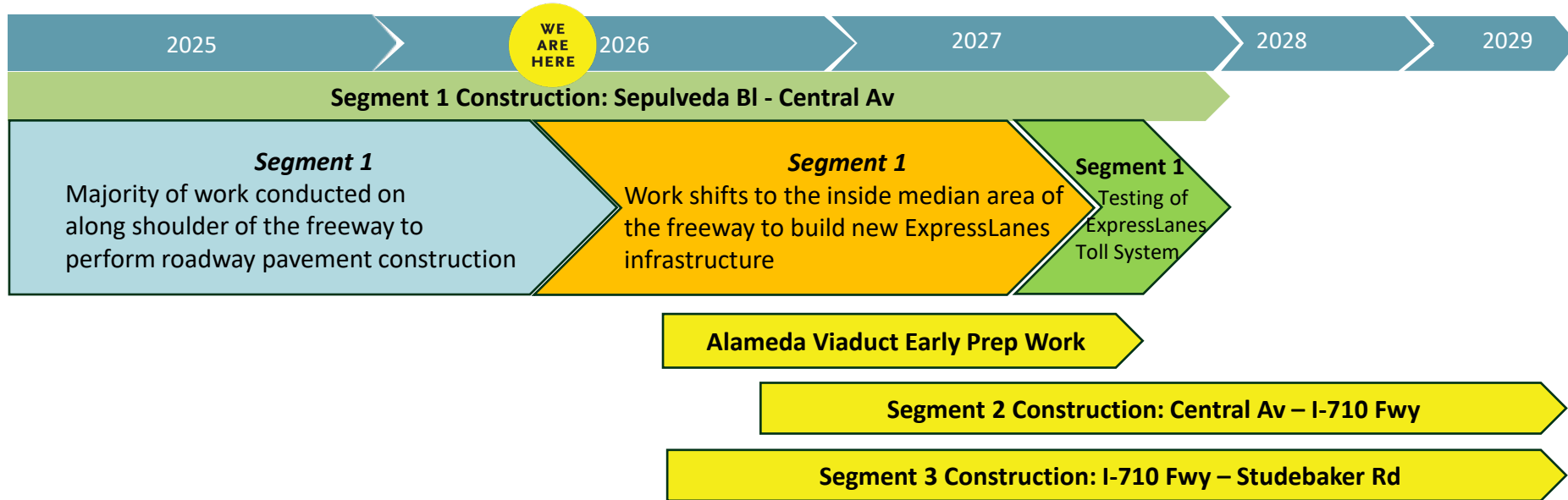
Segment 1 Construction Work Activities

- > Roadway pavement construction along the shoulder and outer edges of freeway corridor
- > New and reconstructed soundwalls (most with increased height)
- > New retaining wall construction
- > Undercrossing/bridge widenings
- > ExpressLanes toll infrastructure, equipment, electrical systems, signage, & pavement markings
- > Landscape and tree removal and restoration



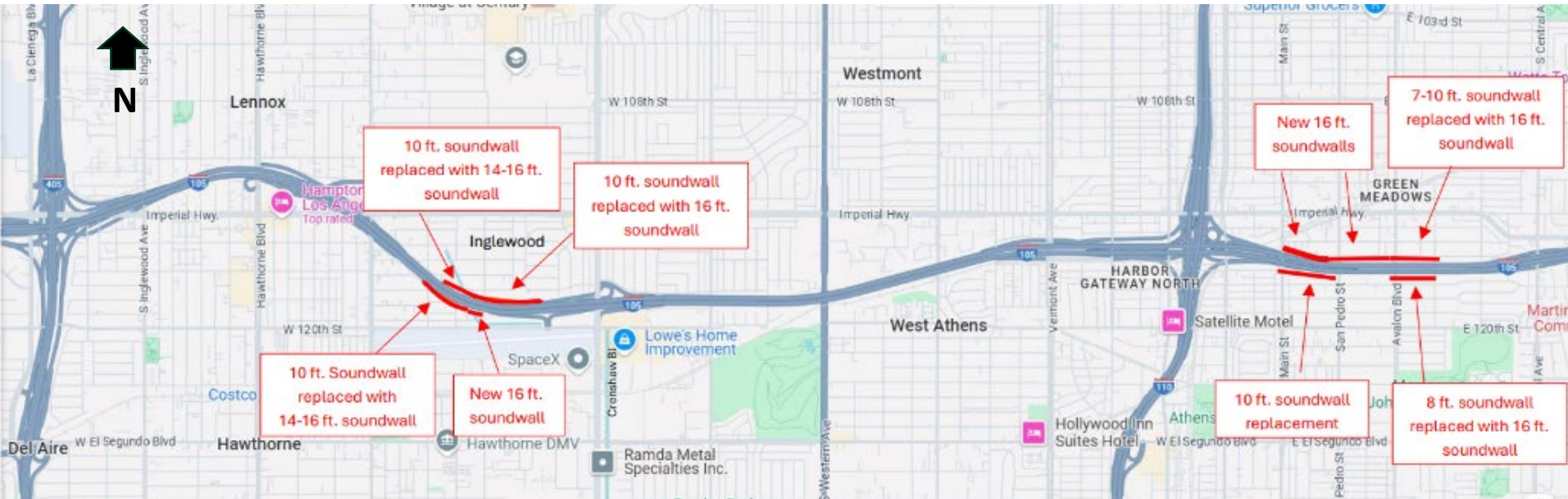
New sound wall: Westbound I-105 in Inglewood

I-105 ExpressLanes Project – Anticipated Construction Schedule



Segment 1 Soundwall Construction Locations

Segment 1 Sound Wall Construction



Roadway Pavement/Soundwall Construction

I-105 EXPRESSLANES IMPROVEMENTS Typical Section of Higher I-105 Elevation (Portions of Segment 1 and Segment 2)

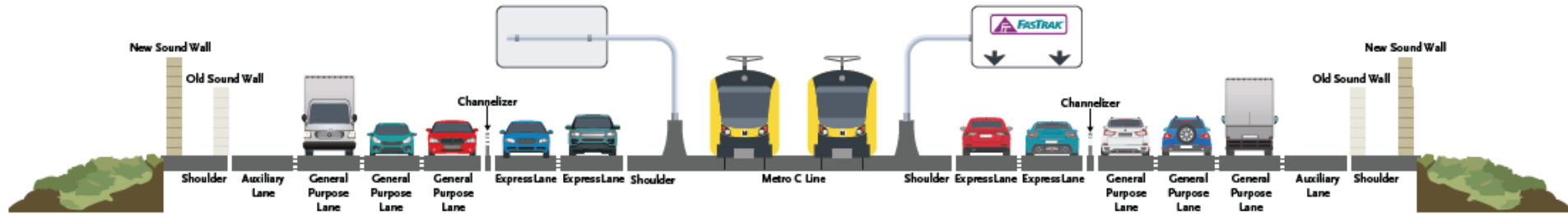


Image is a rough approximation of final roadway configuration



Segment 1 Undercrossing/Bridge Construction

City of Los Angeles



City of Hawthorne and Inglewood
(No vehicle or pedestrian access)



Images are a rough approximation of work zone areas

- > Construction began May 2025
- > Anticipated completion late summer of 2026
- > Work activities include:
 - Drilled pile installation
 - Outer overhead barrier demolition
 - Excavation, bridge foundation and structure work
 - Falsework installation (bridge support structure)
 - Bridge deck installation
- > Work mostly conducted during daytime hours
- > Most work conducted behind k-rail (concrete barriers)
- > Occasional night work including city street closures at I-105 undercrossing in the City of LA

Segment 1 Undercrossing/Bridge Construction



Westbound Avalon BI undercrossing abutment footing



Westbound Avalon BI undercrossing concrete work

Segment 1 Undercrossing/Bridge Construction

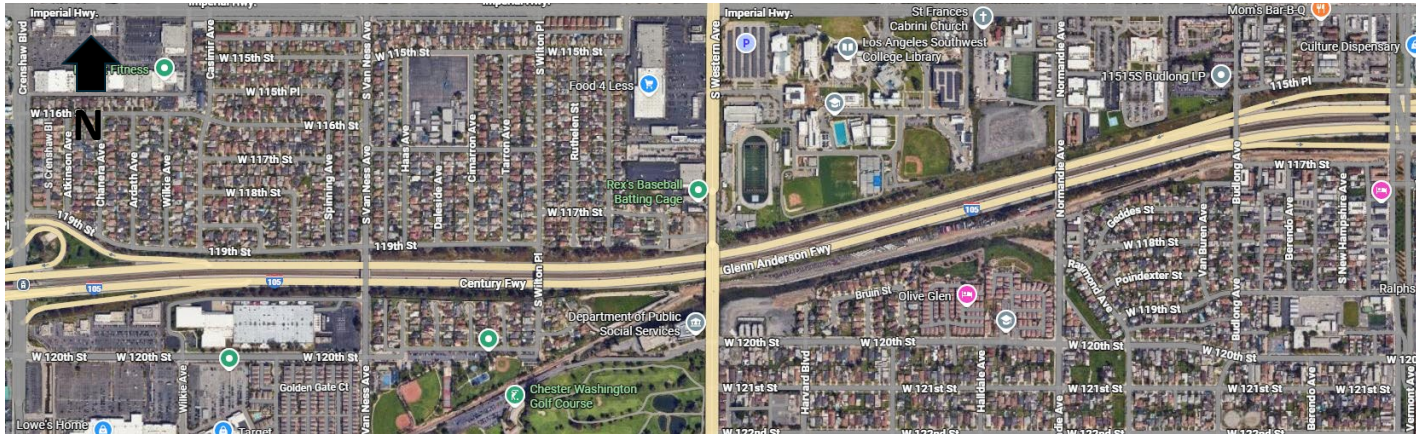


Avalon BI undercrossing construction



Segment 1 Roadway Pavement/Retaining Wall Construction

Typical I-105 retaining wall construction area



Retaining wall construction area along EB and WB I-105 between Vermont Av to Crenshaw Bl

Roadway Pavement/Retaining Wall Construction

I-105 EXPRESSLANES IMPROVEMENTS Typical Section of Lower I-105 Elevation (Portions of Segment 1 and Segment 3)

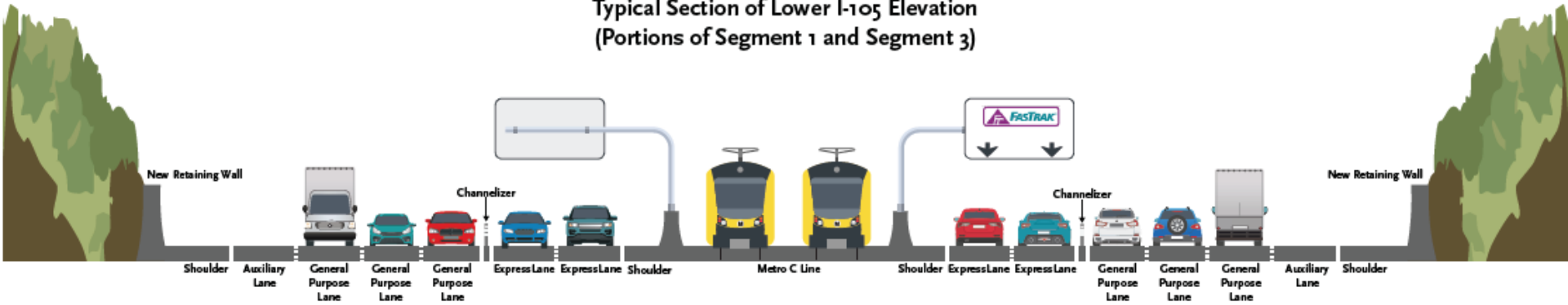


Image is a rough approximation of final roadway configuration



Freeway Traffic Control/Closures

- > Regular nightly I-105 traffic control to support work activities:
 - Freeway lane closures
 - Intermittent on & off ramp closures
 - Intermittent connector ramp closures
- > Occasional full directional freeway closures to support work activities:
 - Late nighttime work activity typically between 11 PM – 5 AM
 - Traffic detours implemented
 - Advance signage in place to alert motorists

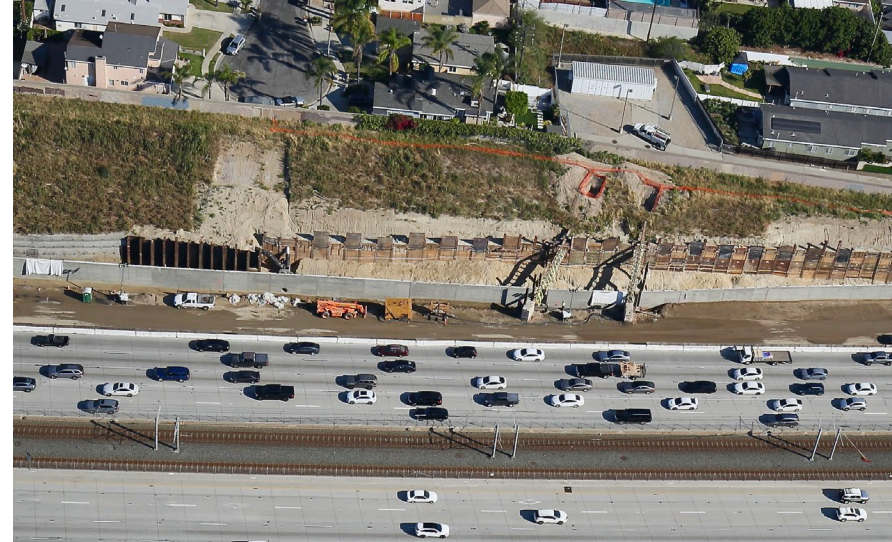


Segment 1: Overhead signage removal on the eastbound I-105 near Vermont Av

Freeway Traffic Control/Closures (cont.)


Extended weekend lane closures

- Series of closures for median sign structure work
- Directional inside/center 2 lane closures
- Implemented intermittently from spring 2026 to early 2027
 - Completed April 25 – 26 (Metro C Line power relocation work)
 - July 18 – 19 (First median sign structure work)
 - July 25-26 (Median sign structure work)
 - Additional dates to be determined



Retaining wall construction near Western Av

Segments 2 and 3 Construction Work Activities

- > New roadway pavement construction throughout I-105 corridor
- > Construction of new soundwalls and reconstructed soundwalls (most with increased height) – Segment 2 from Central Av to Atlantic Av
- > Undercrossing/bridge widenings (total of 11) – Segment 2 from Success Av to Atlantic Av
- > New retaining wall construction – Segment 3 from I-710 to Studebaker Rd
- > ExpressLanes toll infrastructure, equipment, electrical systems, signage, & pavement markings
-  > Landscape removal and restoration

Segments 2 and 3 Construction Work Activities (cont.)

- > Minor I-105 preconstruction activities started in Spring 2026
 - Utility verification
 - Freeway field investigatory and surveying activities
 - Preconstruction surveys of local areas and properties

- > Imperial Hwy/Alameda St early prep work in mid 2026
 - Implementation of long-term traffic reconfiguration/lane reductions
 - Utility relocations

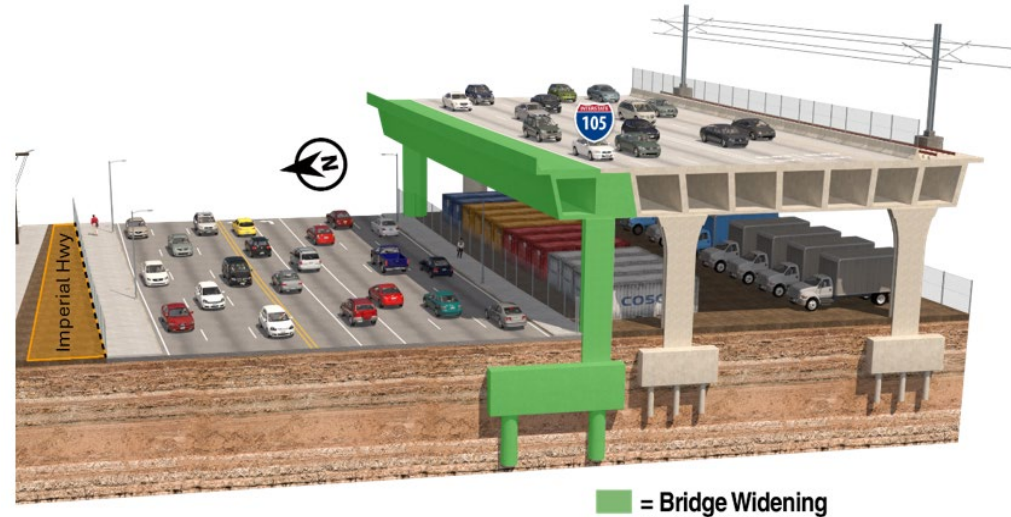
- > New auxiliary lanes from I-710 to Long Beach Bl

- > New ExpressLanes weave lanes near I-710



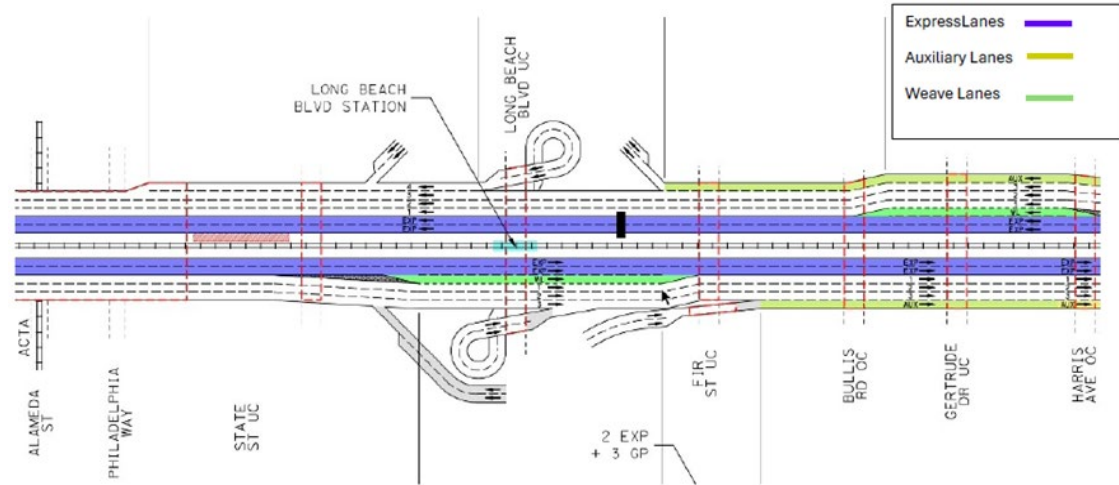
Alameda/Imperial Hwy Viaduct Widening and Retrofit

- > Anticipated 2 ½ years construction
- > Imperial Hwy traffic reconfiguration
 - Long-term lane reductions (Mona Bl to Fernwood Av)
 - Truck detours
- > Work Activities:
 - Utility relocations (summer 2026 - 2027)
 - Viaduct widening (Summer 2027 - late 2028)

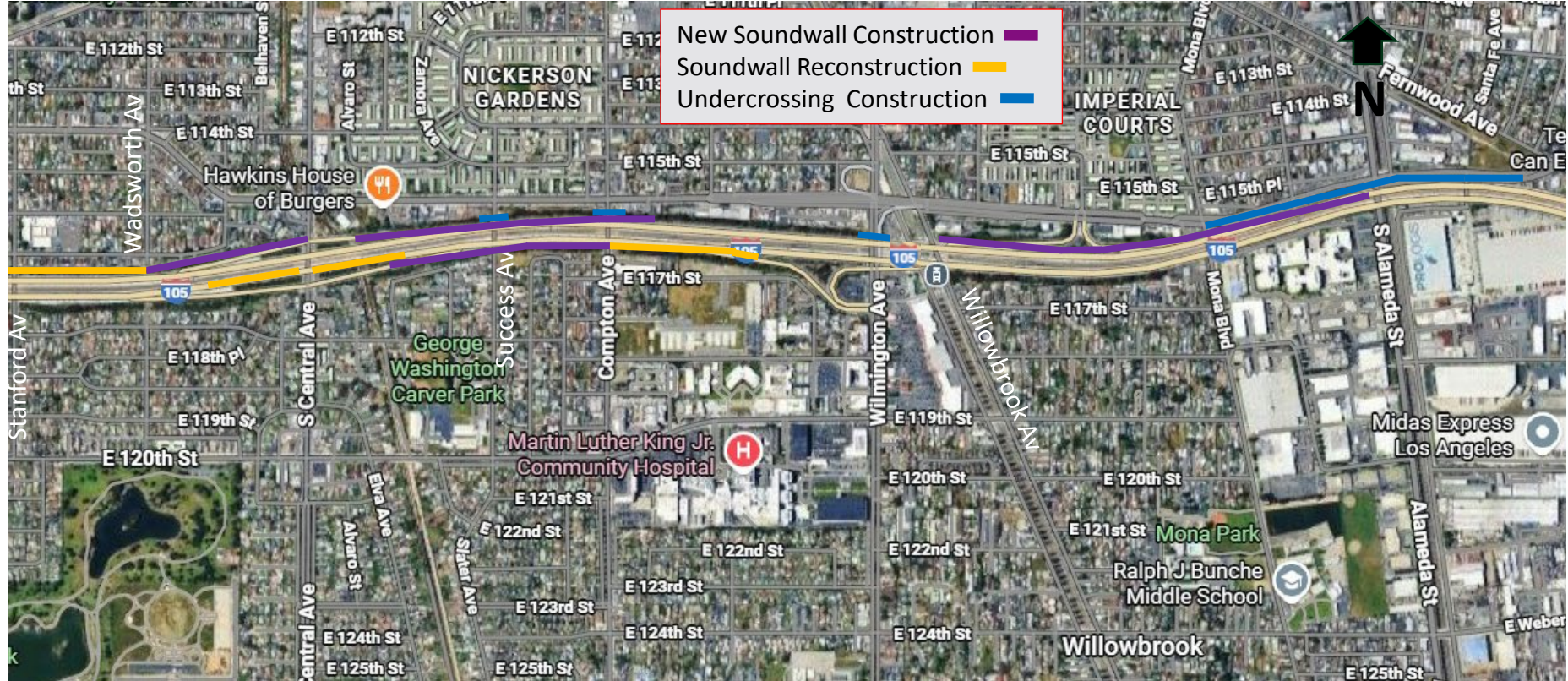


Segment 2 – New ExpressLanes Auxiliary and Weave Lanes

- > New auxiliary lanes from I-710 to Long Beach Bl in each directions
 - Supporting safer and smoother lane transitions
- > New ExpressLanes weave lanes between Mona St to Harris Av in each direction
 - Supporting safer and smoother lane transitions into and out of the ExpressLanes



Segment 2 Project Improvements City of LA/Willowbrook/Lynwood Area

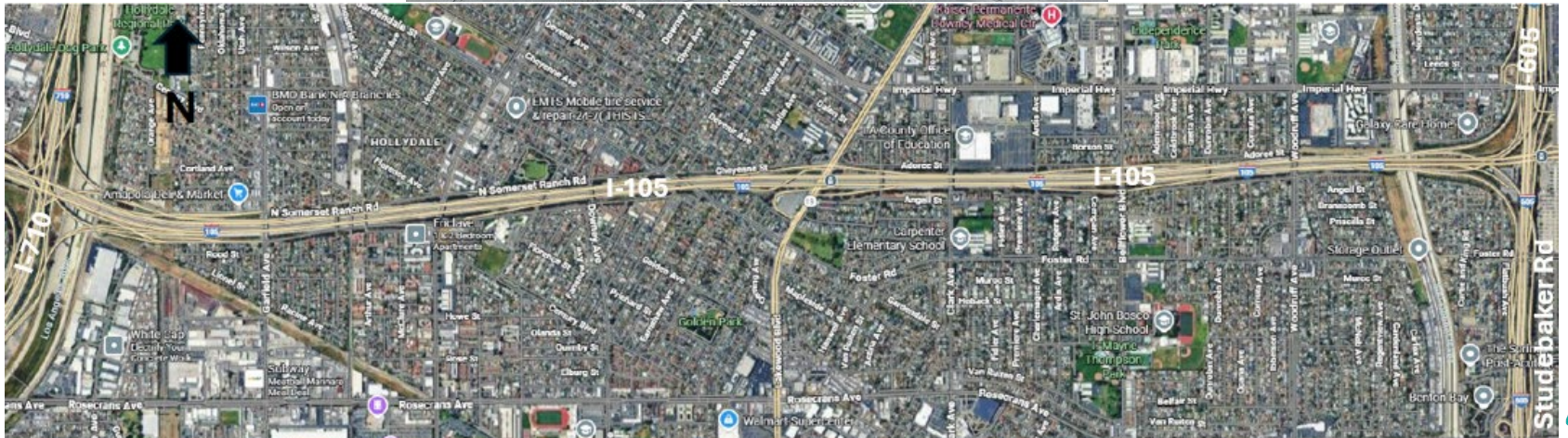


Segment 2 Project Improvements – City of Lynwood



Segment 3 Roadway Pavement/Retaining Wall Construction

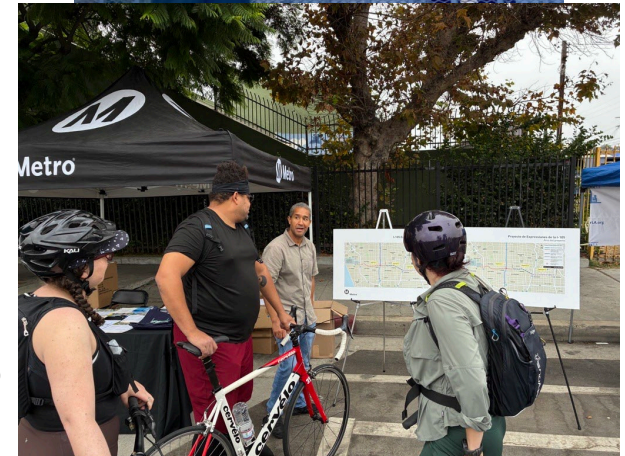
Typical I-105 retaining wall construction area



Retaining wall construction area along EB and WB I-105 between I-710 to Studebaker Rd

Segment 2 & 3 Community Outreach and Engagement

- Briefings with local cities along the corridor
- Project initiation mailer to local stakeholders
- Preconstruction outreach to local property owners/stakeholders
- City of Lynwood coordination
 - City Council presentation
 - Office of City Manager coordination
 - Project information dissemination
- Key stakeholder outreach
 - Large employers
 - Educational institutions
 - Medical facilities
 - Community groups
- Upcoming Segment 2 & 3 Community Meeting in July 7, 2026



Stay connected to this project.



213.922.6565



105ExpressLanes@metro.net



Metro.net/105expresslanes