



# Connect SoCal 2050 Local Data Exchange (LDX)

---

Kevin Kane, PhD

Forecasting & Spatial Analytics, SCAG

March/April 2026

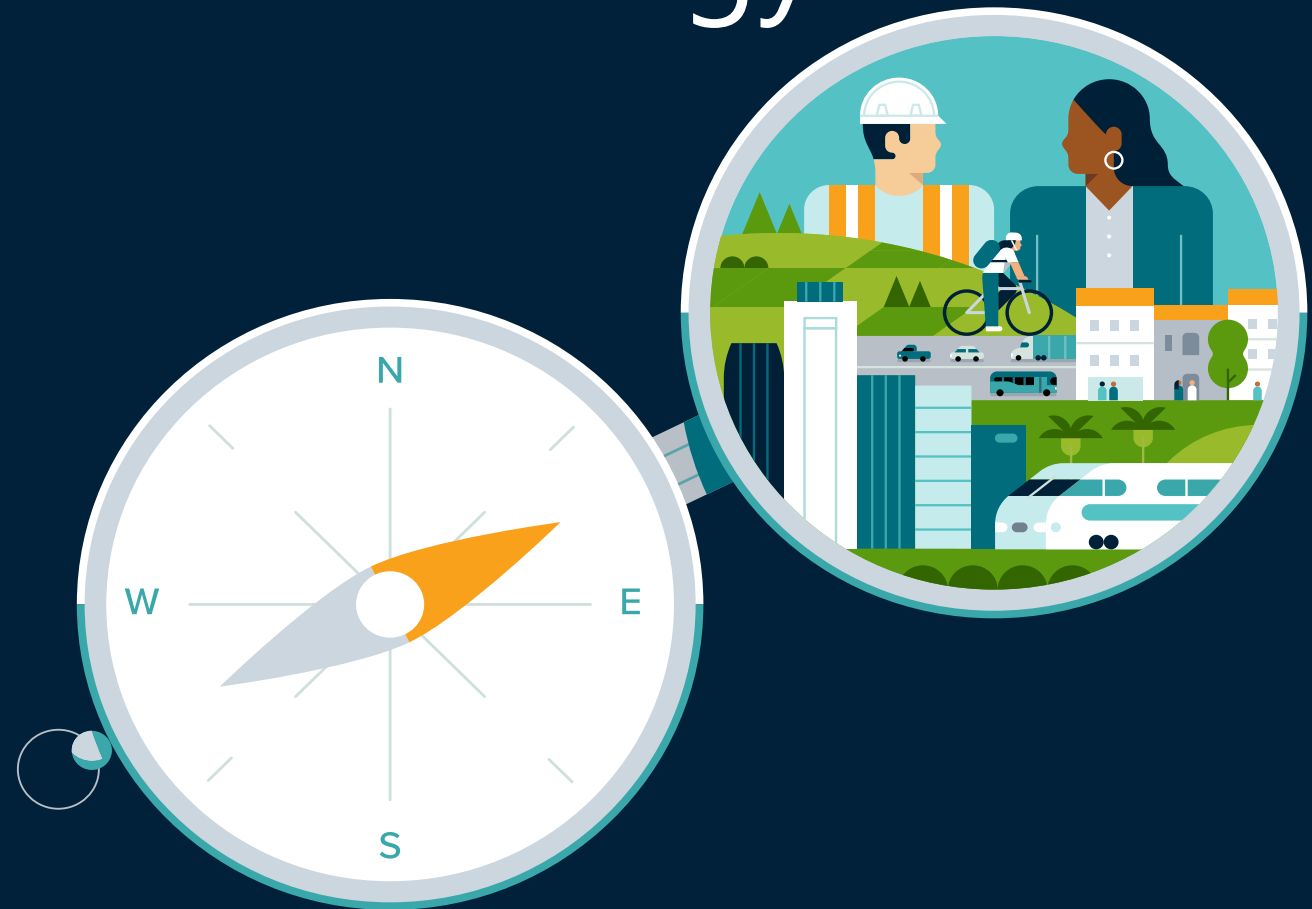
[WWW.SCAG.CA.GOV](http://WWW.SCAG.CA.GOV)

# Connect SoCal 2050

## Regional Transportation Plan/ Sustainable Communities Strategy

This federally and state required plan will show how the region will develop over the next 20+ years and will detail investments in the regional transportation network.

These two core elements along with regional policies and strategies will enable SCAG to meet its mobility, community, environmental and economic goals.



# Local Data Exchange (LDX): A Local Input Process for Connect SoCal

---

- **What is LDX?**

- Through the LDX, SCAG aims to meet and exchange local information for regional purposes with all Southern California Jurisdictions.

- **Why LDX is used?**

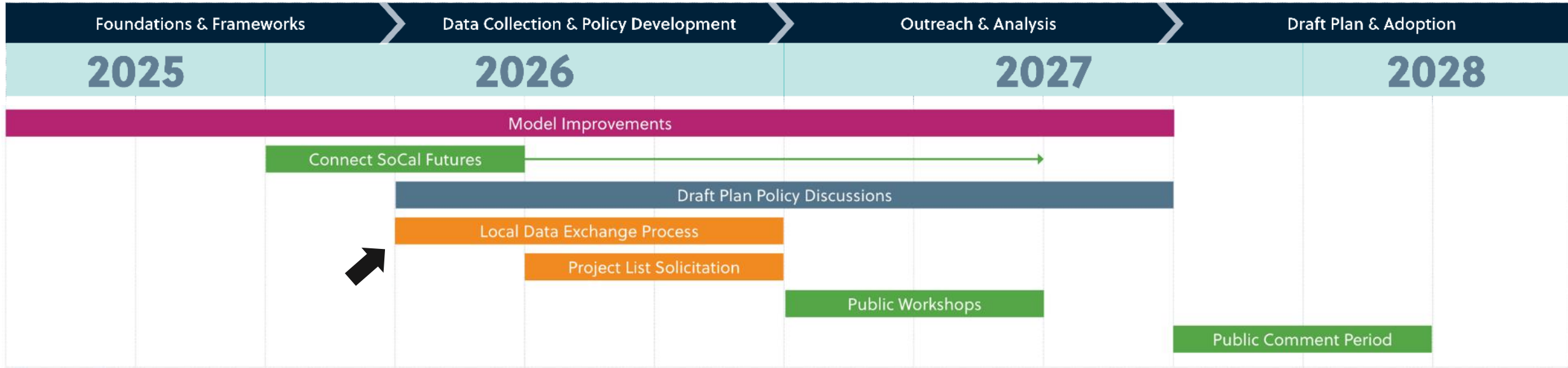
- A key purpose is to support SCAG in meeting the requirement to “set forth a forecasted development pattern for the region.” The LDX is also the primary opportunity for local jurisdictions to provide input into the development of Connect SoCal, ensuring that the data are accurate and consistent across the region.

- **How LDX works?**

- SCAG prepares jurisdiction-specific GIS data and maps and a survey. SCAG aims to meet one-on-one with local jurisdictions to discuss the data and plan development. For Connect SoCal 2050, meetings will begin in April 2026 and input is due to SCAG by November 20, 2026.



# Connect SoCal 2050 Preliminary Milestones\*



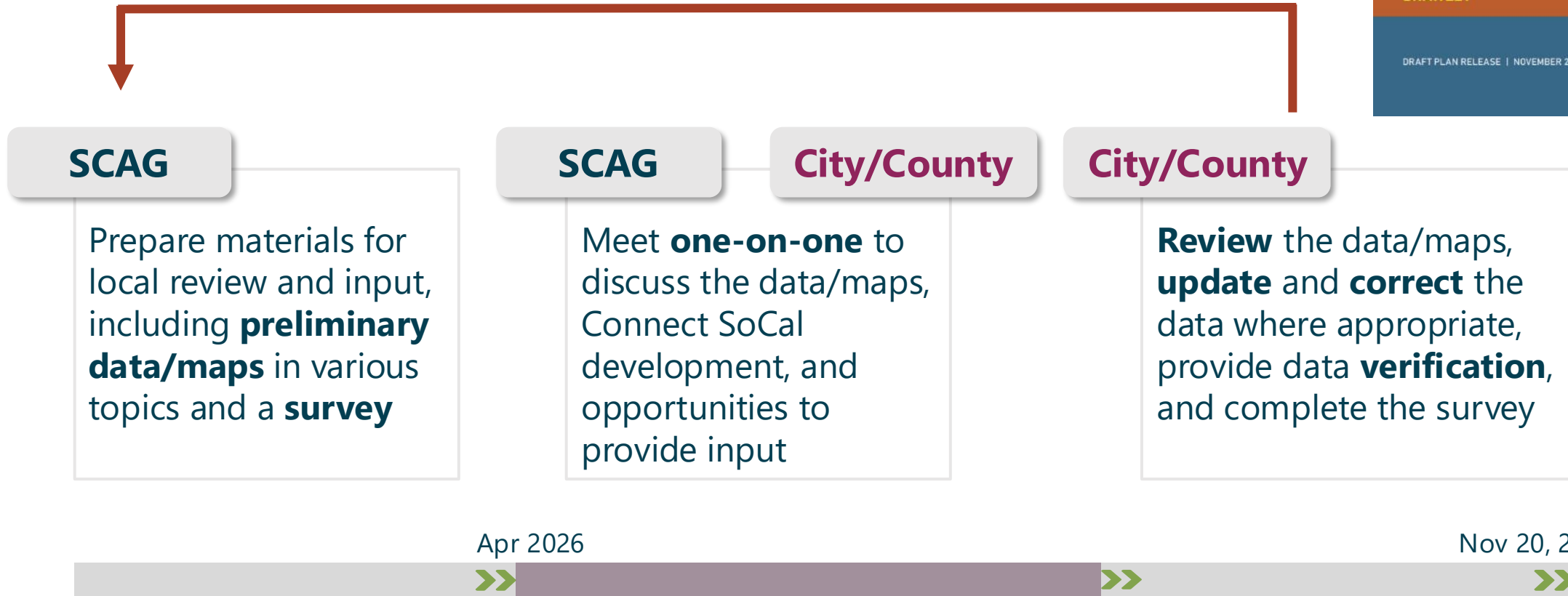
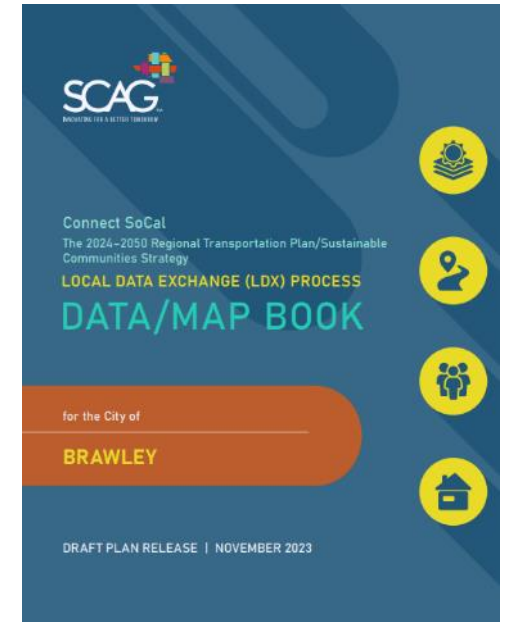
Milestones Color Key:

- Plan Foundation and Elements
- Local Agency Input Process
- Modeling/Forecast
- Outreach and Engagement

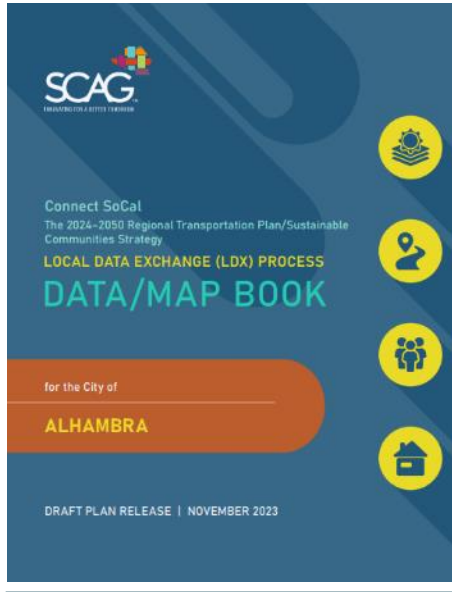
\* Draft - Subject to Change

# Local Data Exchange: the *Process*

- Data with local input + survey responses will inform the development of upcoming RTP/SCS;
- Local Data/Map Books will be updated.



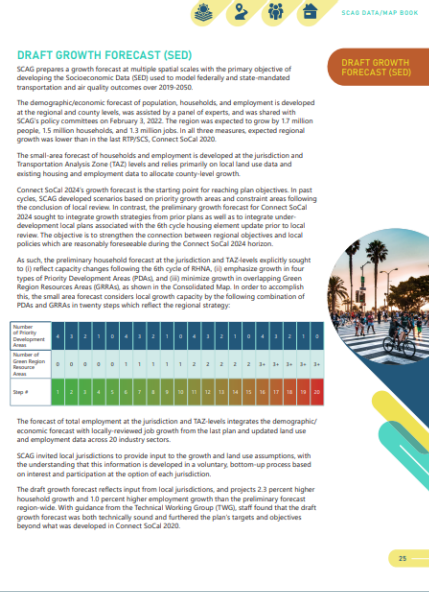
# Local Data/Map Book



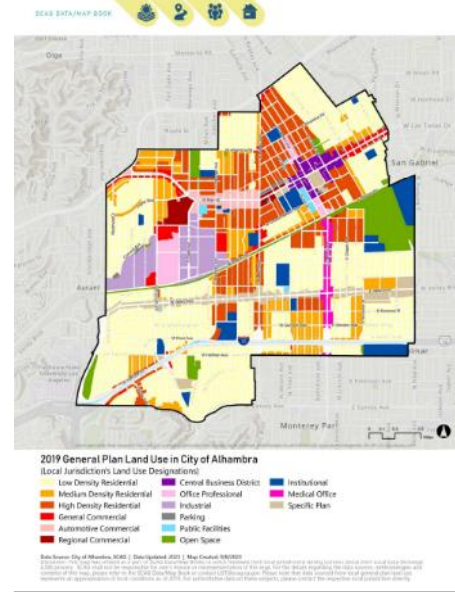
Cover Page



Data Description



Methodology



Map Example: General Plan Land Use



Data available via SCAG's Content Library

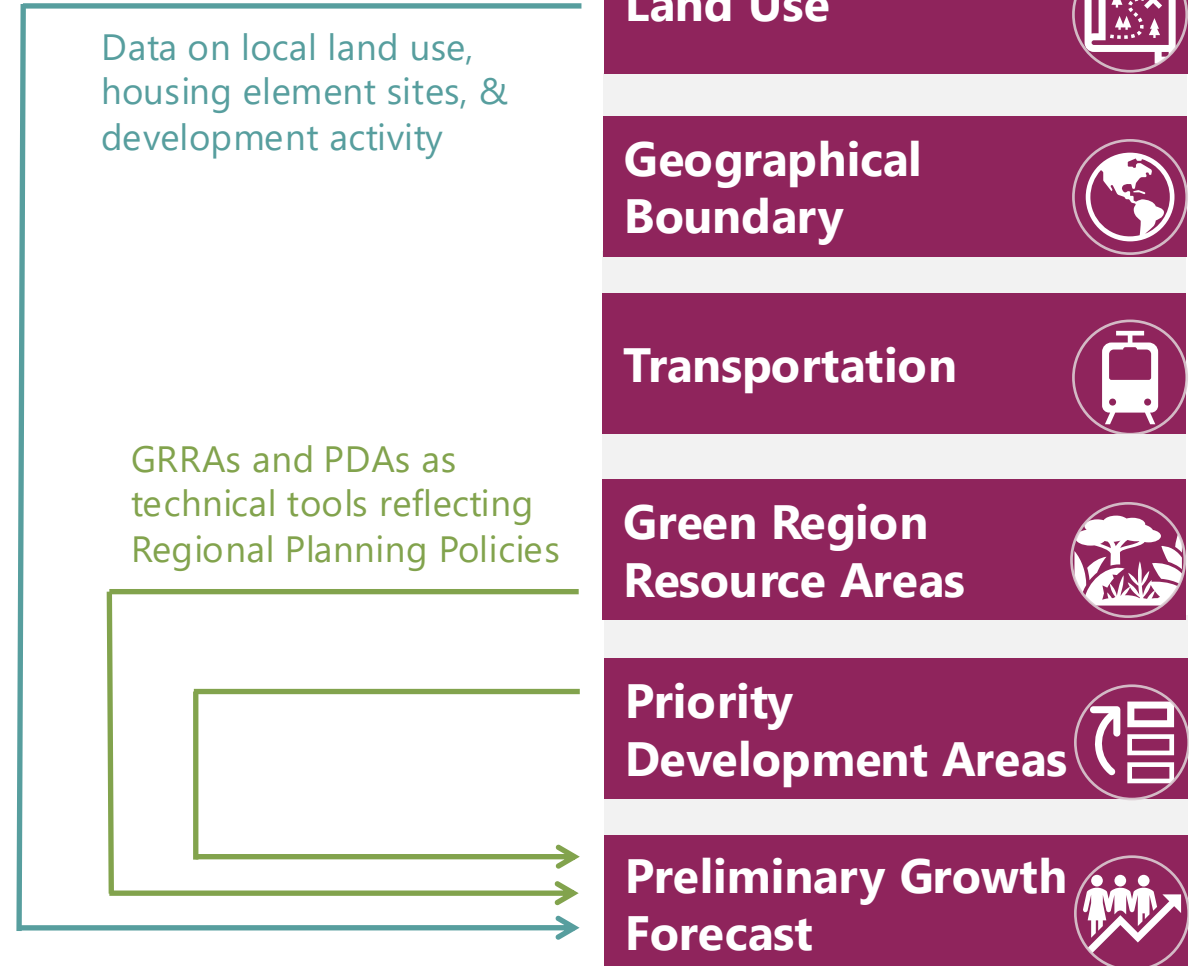
# Preliminary Data/Maps for Connect SoCal 2050

- Six categories of data/maps:
  - Local jurisdictions may update/correct data that fall within local purview
  - Additional regional data provided as a reference
- LDX serves as a two-way information exchange process to provide *transparency* into regional plan development process as well as *data*, *resources*, and *tools*.



# Preliminary Data/Maps for Connect SoCal 2050

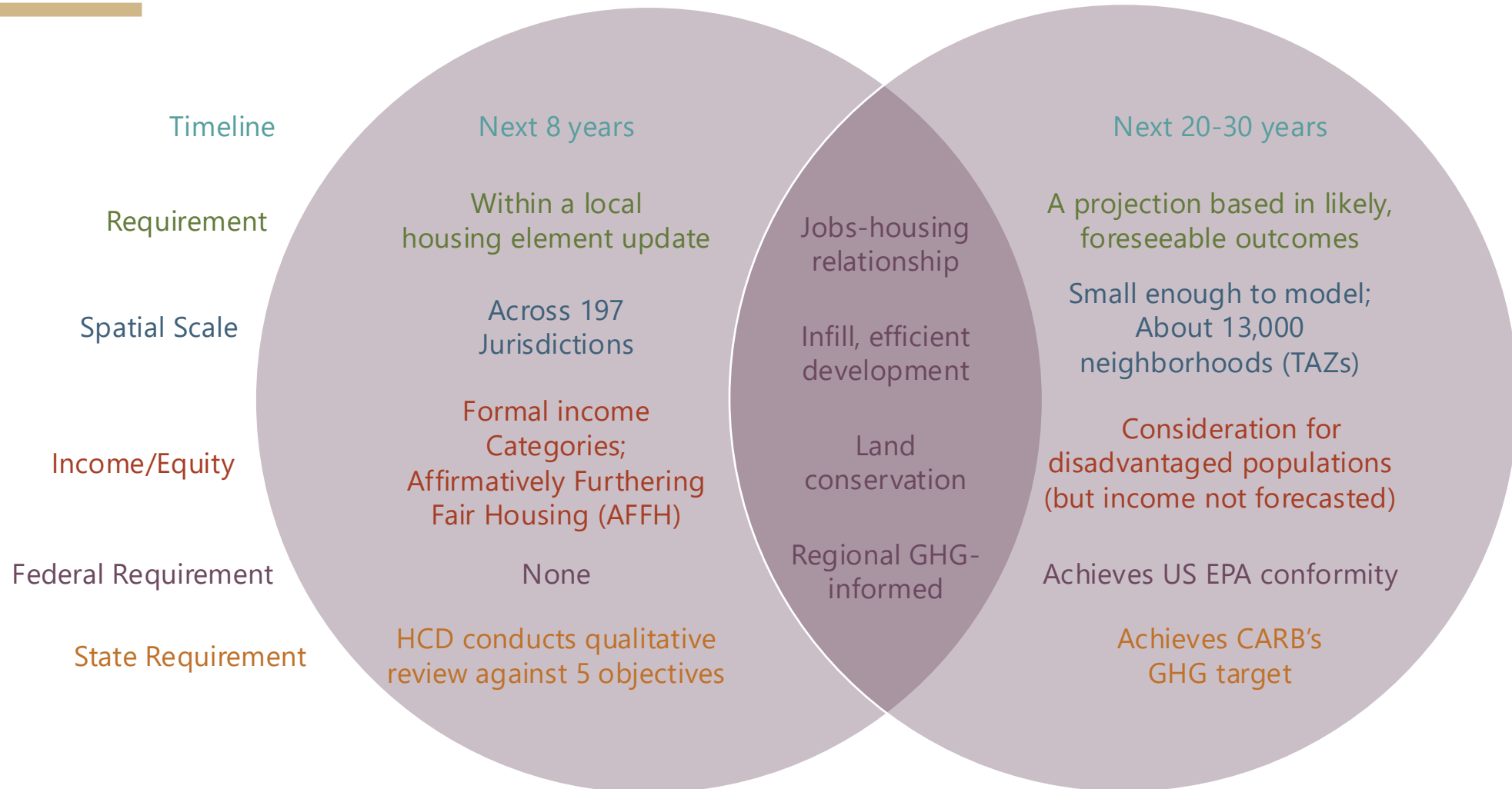
- LDX provides a process for SCAG staff to work with local jurisdictions to generate a **forecasted regional development pattern (FRDP)**:<sup>1</sup>
  1. Rooted in local planning policies.
  2. Aligned with state policy.
  3. Steered by a regional vision.









1. California Government Code 65080(b)(vii) states that an MPO shall "set forth a forecasted development pattern for the region, which, when integrated with the transportation network, and other transportation measures and policies, will reduce the greenhouse gas emissions from automobiles and light trucks to achieve, if there is a feasible way to do so, the greenhouse gas emission reduction targets approved by the state board, and (viii) allow the regional transportation plan to comply with Section 176 of the federal Clean Air Act (42 U.S.C. Sec. 7506)."

**7<sup>TH</sup> Cycle RHNA Allocation  
(2029-2037)**

**Connect SoCal 2050 Forecasted  
Development Pattern (2024-2050)**

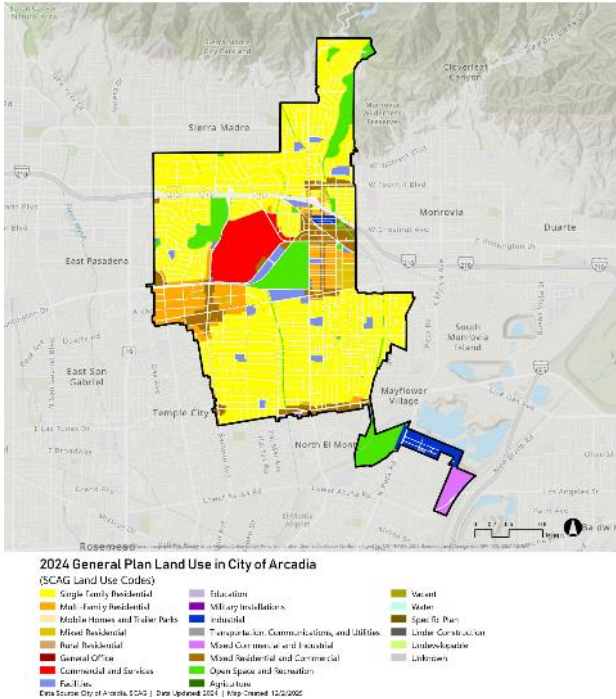


# Preliminary Data/Maps for Connect SoCal 2050

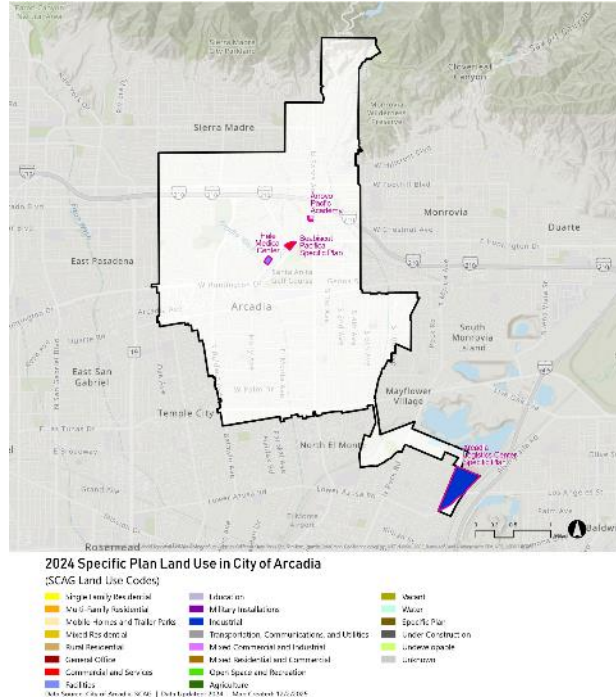
<p><b>Update</b></p>  <p><b>Land Use</b></p>	<p><b>Reference</b></p>  <p><b>Geographical Boundary</b></p>	<p><b>Update/Reference</b></p>  <p><b>Transportation</b></p>	<p><b>Reference</b></p>  <p><b>Green Region Resource Areas (GRR)</b></p>	<p><b>Reference</b></p>  <p><b>Priority Development Areas (PDA)</b></p>	<p><b>Update</b></p>  <p><b>Preliminary Growth Forecast</b></p>
<p>General Plan land use</p> <p>Specific Plan land use</p> <p>Existing land use</p> <p>Zoning code</p> <p>6<sup>th</sup> cycle housing element + rezone sites</p> <p>Residential development activity</p>	<p>City boundary</p> <p>Sphere of influence</p> <p>Census tract</p> <p>Transportation Analysis Zone (TAZ) geography</p>	<p>Major transit stops</p> <p>Transit Priority Areas (TPA)</p> <p>High Quality Transit Corridors (HQTC)</p> <p>Dedicated Transit Lanes</p> <p>California Road System</p> <p>*Mobility Hubs</p> <p>*Regional bikeways</p> <p>*Regional truck routes</p>	<p>Conserved Area</p> <p>Climate Hazards (flood, fire hazard, sea level rise)</p> <p>Habitat (aquatic resources, wildlife corridors, habit value)</p> <p>Agriculture (farmland)</p>	<p>PDA category</p>	<p>Households 2024-2050</p> <p>Employment 2024-2050</p>

Note. SCAG is seeking input on all data and maps under the land use and preliminary growth forecast categories. In addition, we ask local jurisdictions to provide updates or corrections to transportation maps identified by an asterisk.

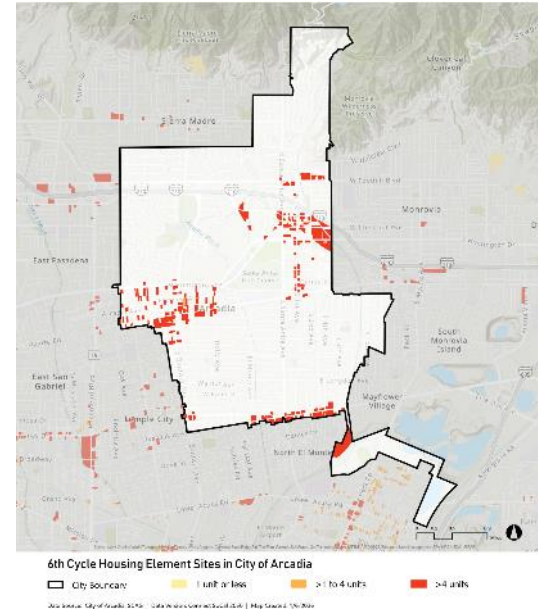
# Examples of *Land Use Maps* (For Review)



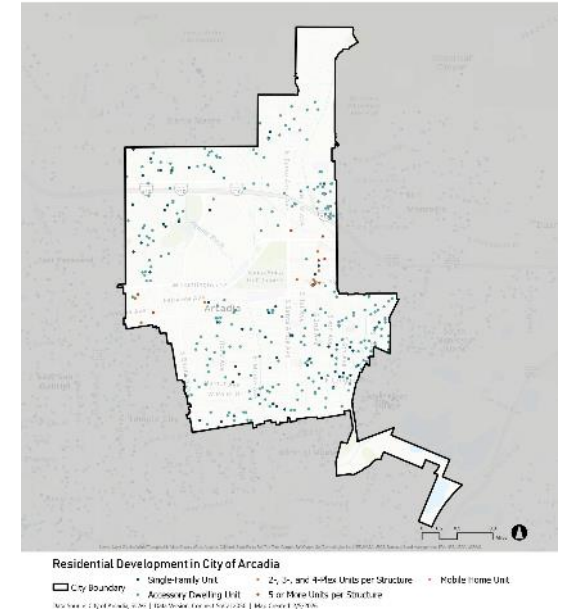
General plan land use, sourced from city



Specific plan land use, sourced from city



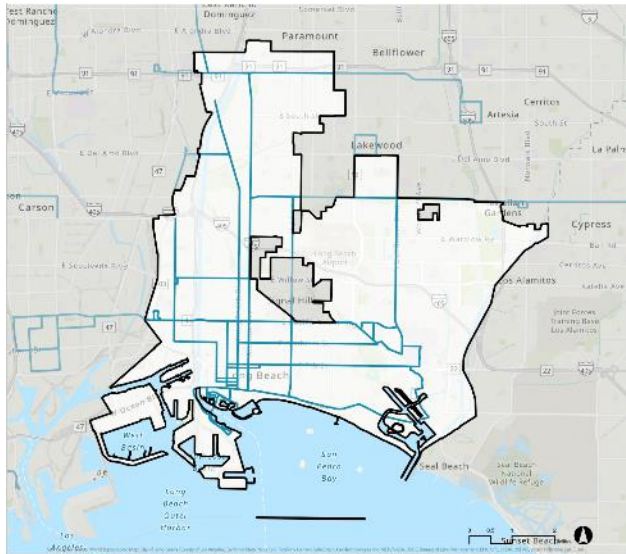
6th Cycle housing element sites, sourced from local sites inventory data submitted to HCD



Residential development activity, sourced from local annual progress reports (APR) submitted to HCD

Note. Local jurisdictions are asked to provide updates/corrections where appropriate to all land use maps. Full descriptions and complete details of data sources for each map are provided in Data/Map Books.

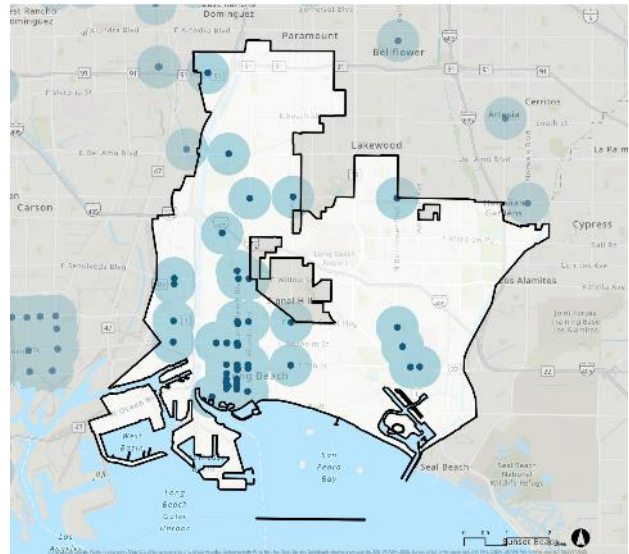
# Examples of Transportation Maps (Reference Only)



**High Quality Transit Corridors in City of Long Beach**  
[Connect SoCal 2024 Plan Year 2050]

Note: HQTs calculated in the Data/Map Book are based on the 2050 plan year transit network of Connect SoCal 2024. Further explanation of the methodology for identifying HQTs is included in the Connect SoCal 2024 Transit Technical Report Appendix. Please note that SCAG updates HQTs with the acquisition of new RTPOCs or updates four years. However, transit planning studies may be conducted by transit agencies on a more frequent basis than the RTPOC is updated by SCAG. This data is intended for planning purposes only, and SCAG shall incur no responsibility or liability as to the completeness, timeliness, or accuracy of this information. SCAG assumes no responsibility arising from use of the information by individuals, businesses, or other public entities, users should consult with the appropriate transit provider to obtain the latest information on the routes, stop locations, and service frequency for a specific mode – including regarding CEQA exemption – or alternative.

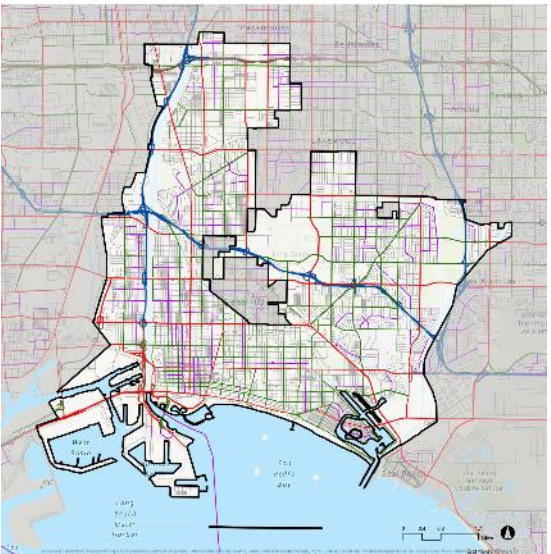
Data Source: County Transportation Commission, SCAG | Data Version: Connect SoCal 2024 - Plan Year 2050 | Map Created: 10/2024



**Transit Priority Areas and Major Transit Stops**  
in City of Long Beach [Connect SoCal 2024 Plan Year 2050 (AB 2553 Updated)]

Note: Major transit stops and the TPAs included in this Data/Map Book are based on the 2050 plan year transit network of Connect SoCal 2024 and reflect the updated statutory definition of major transit stops under AB 2553. Please note that SCAG updates the inventory of planned transit routes with the adoption of a new RTPOC, on a every four years. However, transit planning studies may be conducted by transit agencies on a more frequent basis than the RTPOC is updated by SCAG. This data is intended for planning purposes only, and SCAG shall incur no responsibility or liability as to the completeness, timeliness, or accuracy of this information. SCAG assumes no responsibility arising from use of the information by individuals, businesses, or other public entities, users should consult with the appropriate transit provider to obtain the latest information on transit routes, stop locations, and service frequency for a specific mode – including regarding CEQA exemption – or alternative.

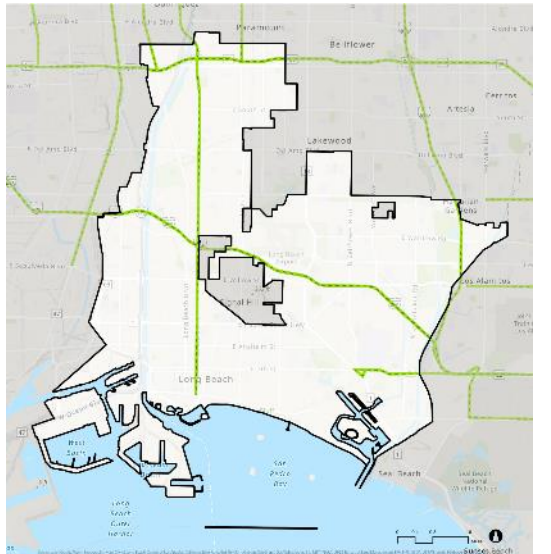
Data Source: County Transportation Commission, SCAG | Data Version: Connect SoCal 2024 - Plan Year 2050 (AB 2553 Updated) | Map Created: 10/2024



**Functional Classification Roads in City of Long Beach**

Note: Major transit stops and the TPAs included in this Data/Map Book are based on the 2050 plan year transit network of Connect SoCal 2024 and reflect the updated statutory definition of major transit stops under AB 2553. Please note that SCAG updates the inventory of planned transit routes with the adoption of a new RTPOC, on a every four years. However, transit planning studies may be conducted by transit agencies on a more frequent basis than the RTPOC is updated by SCAG. This data is intended for planning purposes only, and SCAG shall incur no responsibility or liability as to the completeness, timeliness, or accuracy of this information. SCAG assumes no responsibility arising from use of the information by individuals, businesses, or other public entities, users should consult with the appropriate transit provider to obtain the latest information on transit routes, stop locations, and service frequency for a specific mode – including regarding CEQA exemption – or alternative.

Data Source: Caltrans Department of Transportation (Caltrans) | Data Version: 06/2024 | Map Created: 10/2024



**Dedicated Transit Lanes in City of Long Beach**

Note: Major transit stops and the TPAs included in this Data/Map Book are based on the 2050 plan year transit network of Connect SoCal 2024 and reflect the updated statutory definition of major transit stops under AB 2553. Please note that SCAG updates the inventory of planned transit routes with the adoption of a new RTPOC, on a every four years. However, transit planning studies may be conducted by transit agencies on a more frequent basis than the RTPOC is updated by SCAG. This data is intended for planning purposes only, and SCAG shall incur no responsibility or liability as to the completeness, timeliness, or accuracy of this information. SCAG assumes no responsibility arising from use of the information by individuals, businesses, or other public entities, users should consult with the appropriate transit provider to obtain the latest information on transit routes, stop locations, and service frequency for a specific mode – including regarding CEQA exemption – or alternative.

Data Source: County Transportation Commission, SCAG | Data Version: Connect SoCal 2024 - Plan Year 2050 (AB 2553 Updated) | Map Created: 10/2024

High Quality Transit Corridor, based on the 2050 plan year transit network of *Connect SoCal 2024*

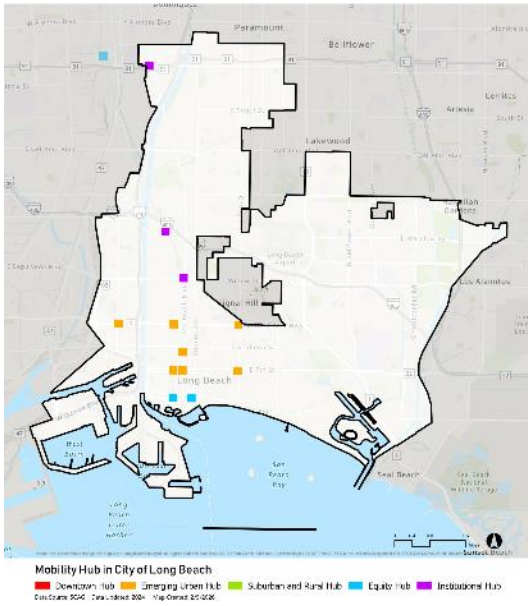
Transit Priority Areas and major transit stops, based on the 2050 plan year transit network of *Connect SoCal 2024*

Functional Classification Roads, sourced from Caltrans California Road System Map

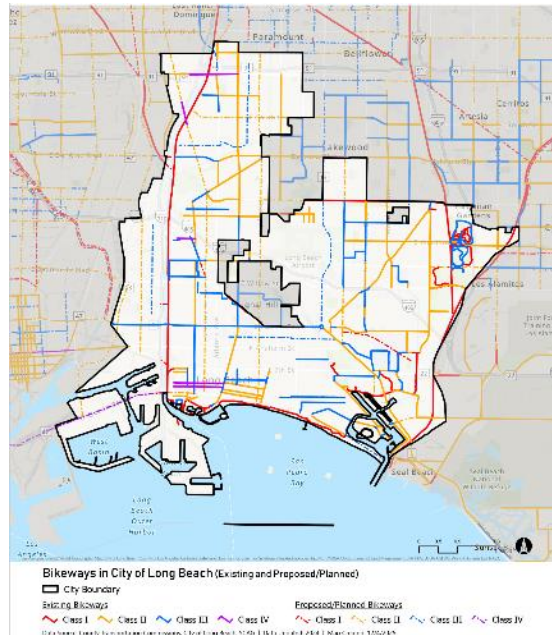
Regional dedicated transit lanes, sourced from *Connect SoCal 2024*

Note. SCAG will seek input from county transportation commissions to update data and maps related to the region’s planned transportation infrastructure as part of the adoption of a new RTP/SCS. Full descriptions and complete details of data sources for each map are provided in Data/Map Books.

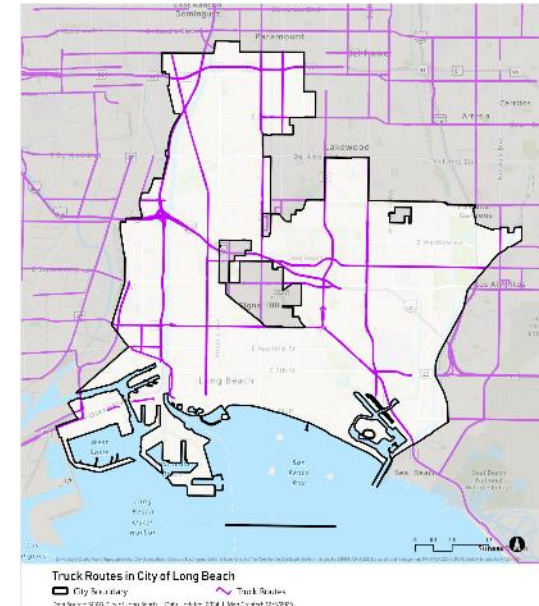
# Examples of *Transportation Maps* (For Review)



Mobility hubs, sourced from *Connect SoCal 2024*



Regional bikeways, compiled in coordination with county transportation commissions and reviewed in LDX processes

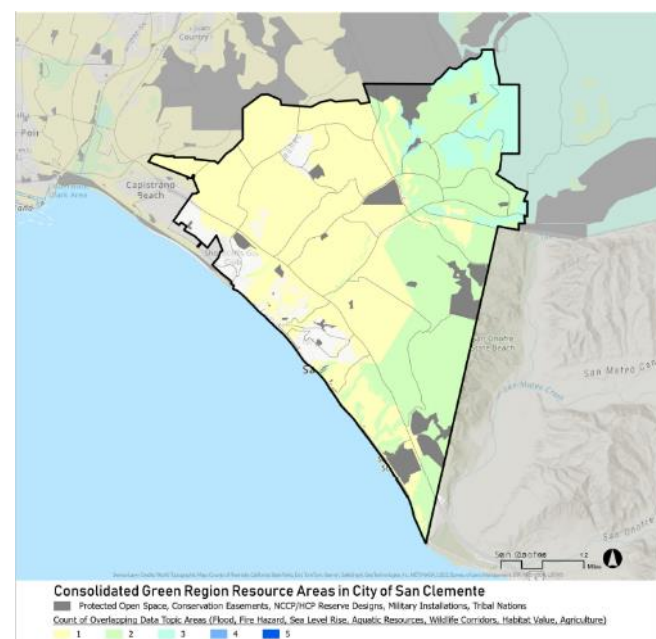


Regional truck routes, sourced from city

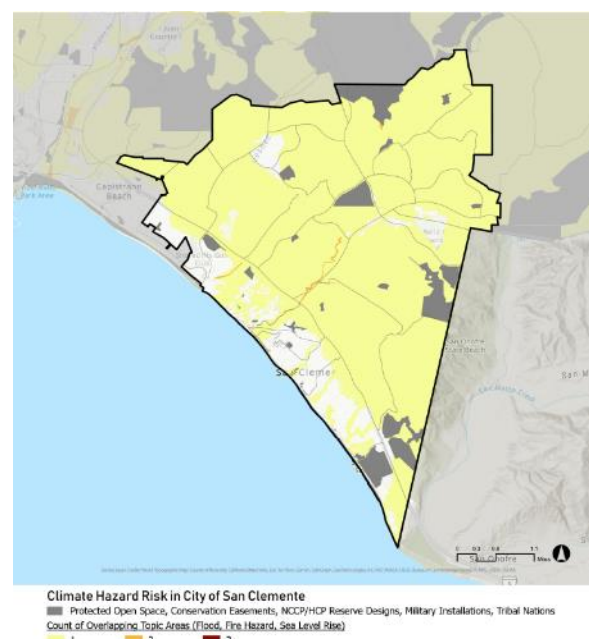
Note. SCAG will seek input from county transportation commissions to update data and maps related to the region's planned transportation infrastructure as part of the adoption of a new RTP/SCS. Full descriptions and complete details of data sources for each map are provided in Data/Map Books.

# Examples of *Green Region Resource Area (GRRRA)* Maps (Reference Only)

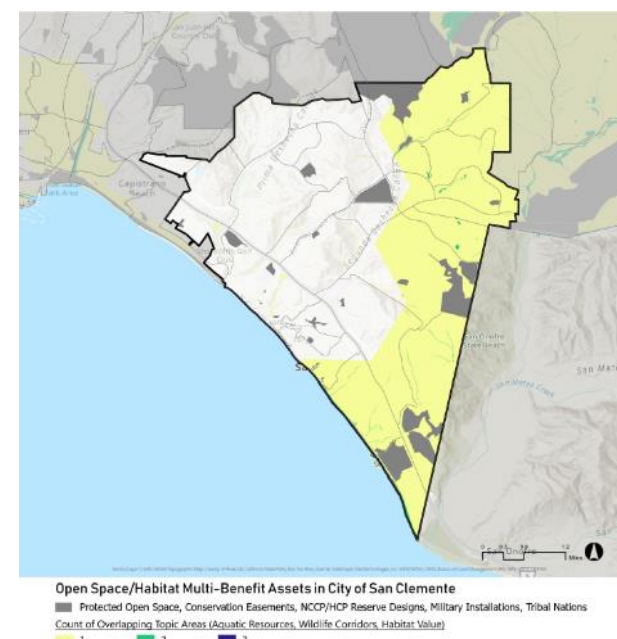
GRRRA maps are derived from Senate Bill (SB) 375 statute and Connect SoCal 2024 strategies, highlighting where future growth may be less feasible or recommended due to sensitivities to climate hazards, habitat areas, agricultural areas, and areas legally protected from growth to a varying degree.



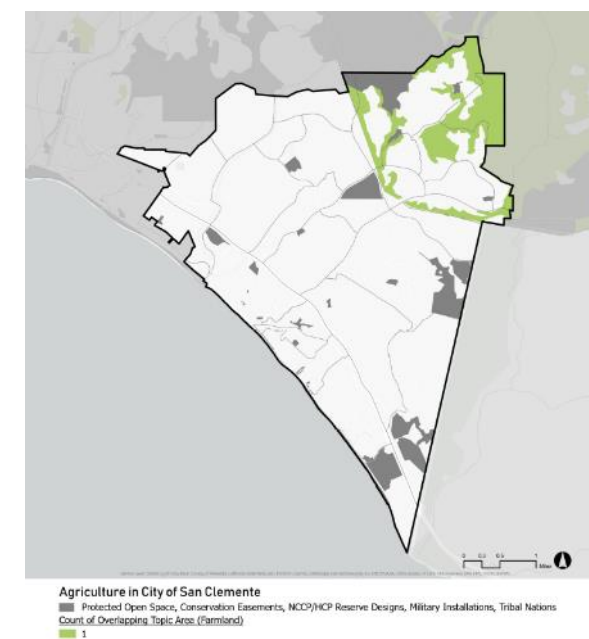
GRRRA consolidated map



Climate Hazard Risk



Habitat areas

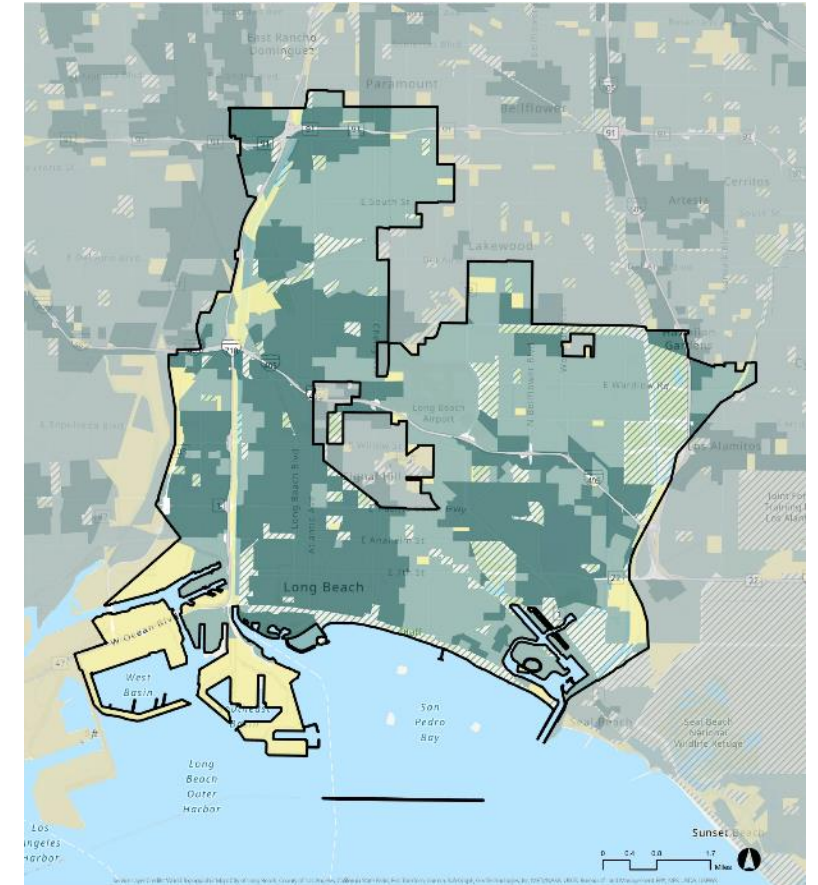


Farmland

Note. Full descriptions and complete details of data sources for each map are provided in Data/Map Books.

# Priority Development Area Map (Reference Only)

- SCAG uses Priority Development Areas (PDAs) as a technical tool during plan development to identify areas likely to result in comparatively lower per-capita vehicle miles traveled (VMT) for residents.
- PDAs are categorized by High Priority Areas, Medium Priority Areas, and Low Priority Areas, which are developed using a GIS suitability analysis.
- Data inputs include *Connect SoCal 2024* street and transit networks, accessibility measure, and Regional Planning Policies.
- PDAs represent a flexible framework developed to support the early stage of *Connect SoCal 2050* development and are subject to further change and refinement including changes resulting from Regional Council direction or state policy.



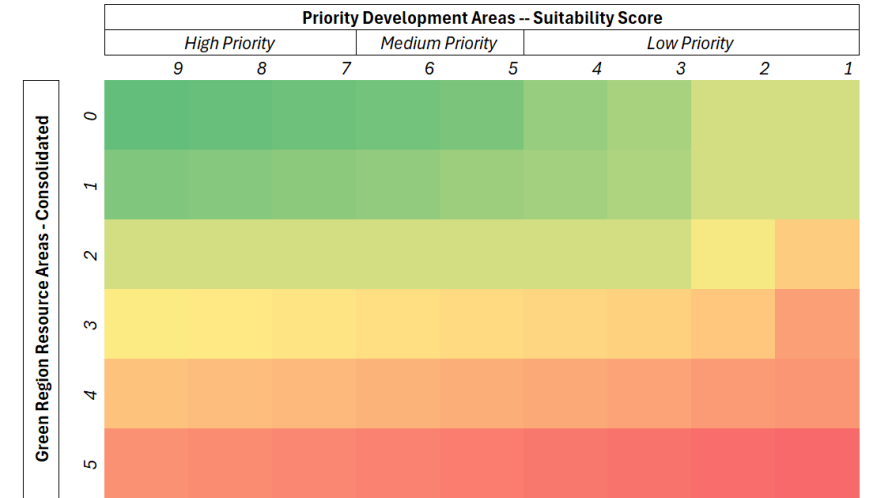
Priority Development Area in City of Long Beach

City Boundary High Priority Medium Priority Low Priority Conserved Area  $\geq 5\%$

Data Source: SCAG | Data Version: Connect SoCal 2018 | Map Created: 5/11/2025

# Data/Maps on *Preliminary Growth Forecast*

- SCAG’s Forecasted Regional Development Pattern begins with county-level growth projections for population, households, and employment;
- A jurisdiction’s household growth largely follows patterns established in Connect SoCal 2024. Within a jurisdiction, growth is distributed based on:
  - Site-level capacity based on local land use data included in LDX (e.g., general/specific plans, housing element sites, sites for rezoning, etc.)
  - Connect SoCal 2024 Regional Planning Policies → GRRAs and PDAs, found in LDX layer
- Employment growth based on prior plan projection and updated land use and economic data across industry sectors



*Illustration of how the preliminary growth forecast assumes supportive planning strategies and investments will increase the feasibility and market viability of a sustainable growth pattern. As supply and capacity data are not consistent across the SCAG region and implementation varies locally, review during LDX is a critical step.*

Maps/Data	Description	Review Type	Update Notes
<ul style="list-style-type: none"> <li>▪ Jurisdiction-level projections</li> </ul>	Household & employment growth (2024-2050)	Update/ Corrections	In progress; anticipated completion by Mar 2026
<ul style="list-style-type: none"> <li>▪ TAZ-level projections</li> </ul>	Map of household & employment growth (2024-2050)		

# Data/Maps on *Geographical Boundary*

Maps	Description	Review Type	Update Notes
<ul style="list-style-type: none"> <li>City Boundary and Sphere of Influence</li> </ul>	Map of city boundary and sphere of influence sourced from County Local Agency Formation Commissions (LAFCO)	Reference Only	Geographical boundaries are for 2024, base year of Connect SoCal 2050
<ul style="list-style-type: none"> <li>Census Tract Boundary</li> </ul>	Map of census tract boundary sourced from the U.S. Census		
<ul style="list-style-type: none"> <li>Transportation Analysis Zone (TAZ) Boundary</li> </ul>	Map of TAZ boundary developed by SCAG to facilitate travel demand and land use modeling		

# LDX Survey

In addition to the LDX data and maps, local jurisdictions will also be asked to provide input through a qualitative survey, which is organized into five sections:

- Land Use & Housing,
- Transportation,
- Environmental,
- Implementation, and
- Data.



# Major LDX and Connect SoCal 2050 Milestones

EVENT	<u>ANTICIPATED DATE</u>
Schedule meetings and begin subregion-level outreach	Beginning March 2026
Finalize and complete LDX data	March 2026
Launch Local Data Exchange. Data made available for local review through <a href="#">Data/Map Books</a>	April 2026
Begin one-on-one meetings with local jurisdictions to review the data package and feedback opportunities	April 2026
Deadline for local jurisdictions to provide feedback for possible inclusion in Connect SoCal	<b>November 20, 2026</b>
Regional collaboration on plan development. Continued development of Connect SoCal strategies with stakeholders, working groups, and the public	2027
Draft Connect SoCal 2050 (RTP/SCS) release	Fall 2027
Final Connect SoCal 2050 (RTP/SCS) adoption	Spring 2028

# What to Expect (April–November 2026)

---

- Access to updated Data/Map Books and complete data package
- One-on-one meetings beginning in April 2026
  - SCAG will reach out to schedule 90-minute meetings with local jurisdictions
- Following the meetings, jurisdictions are asked to:
  - Review LDX data/maps and provide verification by Nov 20
  - Provide input through LDX survey by Nov 20
- Ongoing support from a dedicated point of contact throughout the process



# THANK YOU

---

For questions, contact [LIST@scag.ca.gov](mailto:LIST@scag.ca.gov)

Scan the QR code  
for more information.

