

Metro Goes for Gold!

2028 Olympic and Paralympic Games Planning



South Bay Cities COG

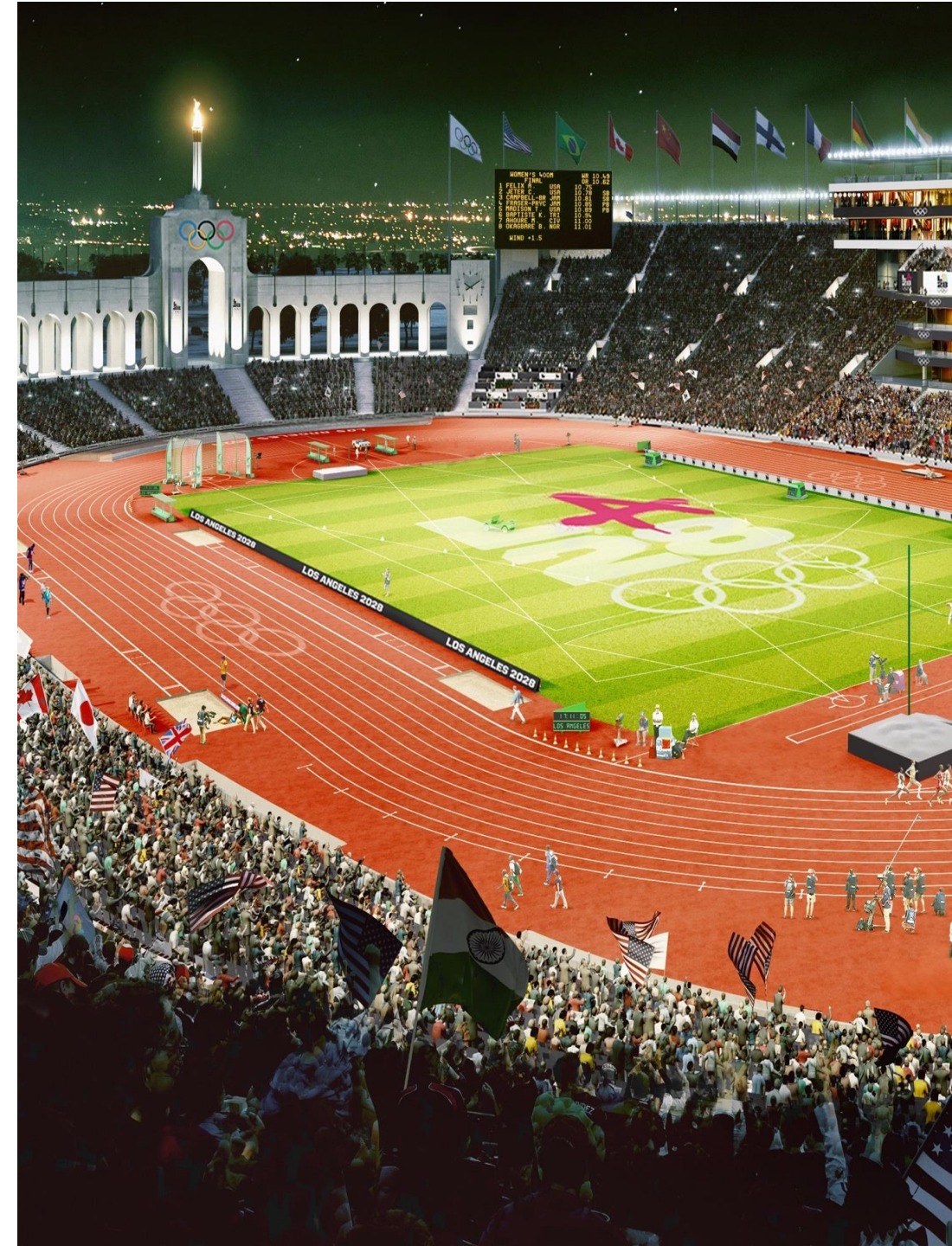
March 9, 2026



Metro®

2028 Games Context

- **Historic**
 - Anticipated largest peacetime gathering in US history
 - Biggest Games ever. Most sports (36). Most athletes (15,000).
 - Los Angeles hosting for 3rd time
 - Only the 3rd city in history with London and Paris
 - First time LA is hosting the Paralympics
- **Challenges**
 - No public or spectator transportation funding or budget. LA28 is privately funded.
 - National Special Security Event (NSSE) prohibits parking at most venues
 - Transit-first Games due to limited parking
 - Games start July 14 –no change for delays!



Games by the Numbers

15M

Spectators

150+

Heads of State +
Government

30

Days of
Competition

11,200

Olympic
Athletes

4,480

Paralympic
Athletes

\$18B

Economic
Output

22,900

Accredited
Media

49

Competition
Venues

206

National Olympic
Committees

185

National
Paralympic
Committees

5B

Viewers Around
the World

11,000+

Hours of Content
Produced by Olympic
Broadcasting Services

800+

Competition
Events

2028 Games Venues

“Like hosting 7 Super Bowls a day”



- Athletes Village at UCLA
- Olympic Family Hotel
- Competition Venue
- Venue Approach Enhancements
- Key Venue Supporting Stations
- Light Rail Safety
- Mobility Hubs
- Bus Corridor Safety Improvements
- Games Enhanced Transit Service (GETS)
- Games Route Network (GRN)
- Assumed Additional GRN Sections
- Metro
- Metrolink

Twenty-Eight by '28

- Revised in March 2024 Project List
- 11 replacement project in **Bold**

PROJECT	CURRENT STAGE	SUBREGION
1. “New Blue” Improvements to the A Line	Operations, opened 2019	GC, CC
2. Silver Line Improvement Program	Operations, opened 2020	SG, CC, SB
3. Crenshaw/LAX Line	Operations, opened 2022	CC, SB
4. Regional Connector	Operations, opened 2023	CC
5. Eastside Access Improvements	Operations, opened 2023	CC
6. Airport Metro Connector Station	Operations, opened 2025	WC
7. J Line Electrification	Operations, opened 2025	SG, CC, SB
8. Rail to Rail, Segment A	Operations, opened 2025	CC
9. North San Fernando Valley BRT	Construction, target 2028	SFV
10. Purple Line Extension, Section 1	Construction, target 2026	WC, CC
11. Gold Line Foothill Ext to Pomona	Operations, opened 2025	SG
12. Purple Line Extension, Section 2	Construction, target 2025	WC
13. Rosecrans/Marquardt Grade Sep	Construction, target 2025	GC
14. New Bus Corridors	Design, target 2026	TBD
15. I-5 North Capacity Enhancements	Construction, target 2026	NC
16. Key DTLA Stations	Planning, target 2026	CC
17. NoHo to Pasadena BRT	Design, target 2027	SFV, SG
18. LA River Bike Path/Mobility Hub - SFV	Design, target 2027	SFV
19. G Line Travel Time & Safety Features	Design, target 2027	SFV
20. Purple Line Extension, Section 3	Construction, target 2027	WC
21. Mobility Hubs in SFV	Planning, target 2027	SFV
22. Gateway Cities MCP Projects	Construction, target 2027	GC
23. LRT Speed & Reliability Improvements	Planning, target 2027	CC
24. Bus Only Lanes (Olympic/Venice)	Planning, target 2027	WC
25. I-105 Express Lanes, Segment 1	Design, target 2028	SB, GC
26. SR 57/60 Interchange Improvements	Construction, target 2028	SG
27. Vermont Transit Corridor BRT	Planning, target 2028	CC
28. I-405 Integrated Corridor Management ⁸	Design, target 2028	SB

Games Mobility Executives (GME)

Priority Workstream	GME Lead Agency
Games Enhanced Transit Service (GETS) & Zero Emission Bus Program & Access Services Electrification	Metro
Games Route Network (GRN) & Integrated Traffic Management	Caltrans
Mobility Hubs	Metro
Bus Only Lanes	Metro
First/Last Mile Improvements & Open Streets	LADOT
Light Rail Speed and Operational Improvements & Key Station Improvements	Metro
Travel Demand Management & Universal Basic Mobility	SCAG
Communications and Outreach	LA28
Universal Design & Inclusive Design	City of Los Angeles
Regional Rail	Metrolink
Wayfinding	Metro
Heat	Metro



Metro



METROLINK

LADOT



MCP Workstreams

Essential Games Projects

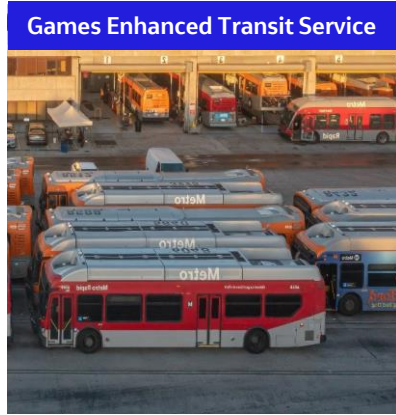
- Games Enhanced Transit Service (GETS)
- Games Route Network (GRN)

Legacy Infrastructure Projects

- First/last mile
- Bus Priority Improvements
- Mobility hubs
- LRT Improvements
- Key Stations (SOGR)
- Zero Emission Bus Program Phase 1
- Access Services Fleet Electrification
- Metrolink 2028 Games Readiness Program
- Integrated Transportation Management

Legacy Programs

- Open Streets to Uplift Arts, Culture, and Recreation
- Transportation Demand Management
- Universal Basic Mobility

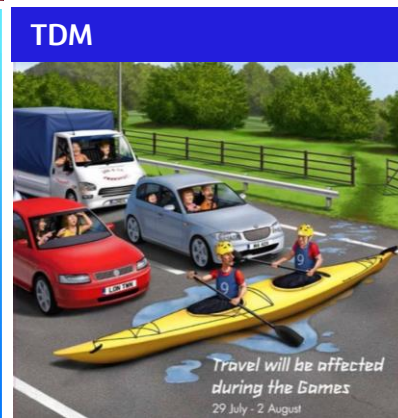


14 Workstreams

11 Metro-led workstreams

\$2B Games workstreams

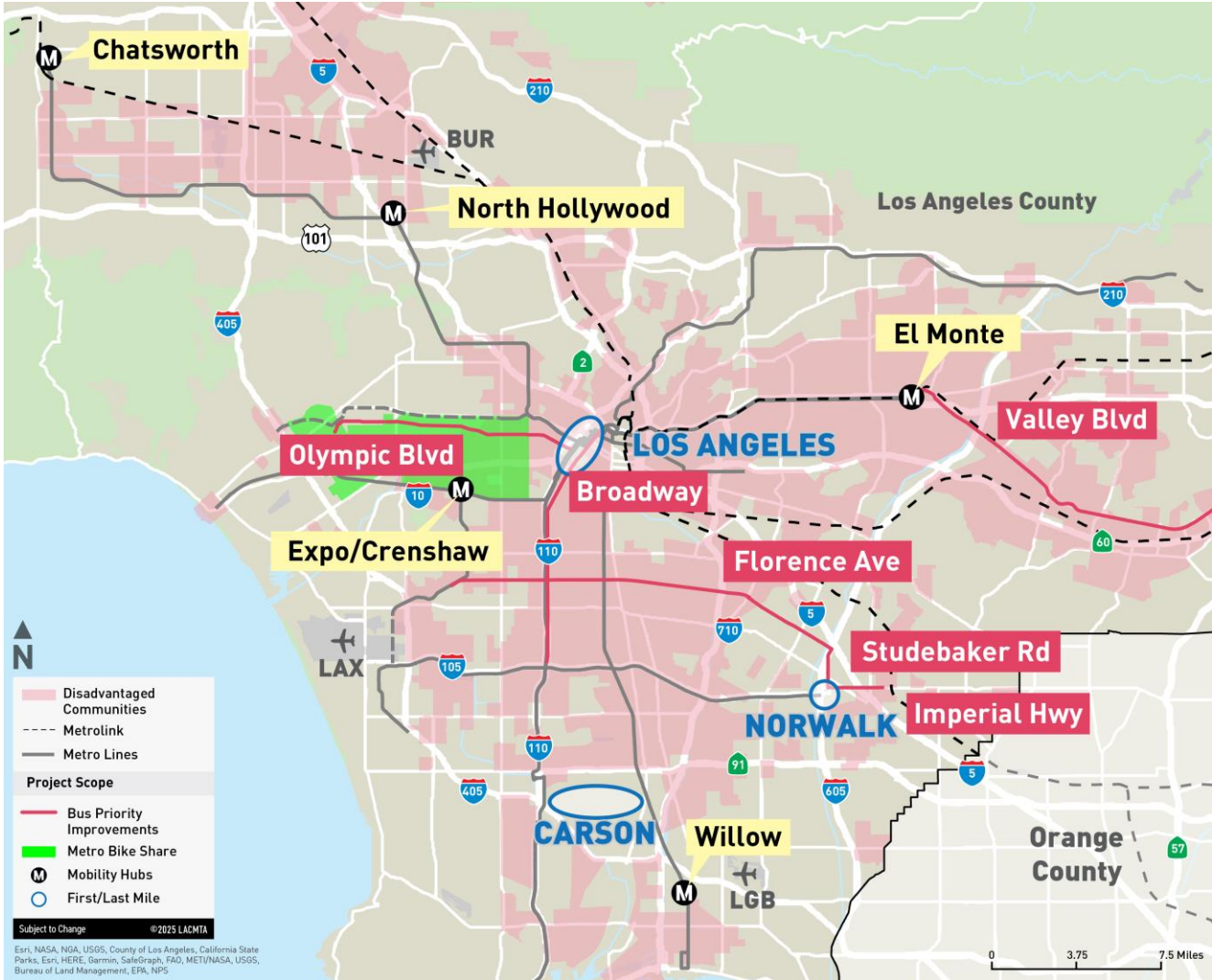
\$1B Legacy workstreams



Removing Barriers and Creating Legacy Grant

- **Goal:** Improve connectivity and equity in LA County's transportation, focusing on disadvantaged communities
- **Impact:** Increase access to jobs, affordable housing and better health.
- **Collaboration:** Work with 13 partners to deliver projects.
- **Acceleration:** Expedite projects to benefit the region and support the 2028 Games

\$161.5 Program Amount		\$139M Federal Amount	
SCOPE			
35 miles bus priority enhancements	5 first/last mile corridors	3 open street locations	
5 mobility hubs	60 bikeshare stations	5 years GoPass	



MCP Priority Projects

- Directive from February 2025 Ad-Hoc Games Committee by Director Bass requested recommendations for
 - A set of high-value, low-cost priority projects consistent with 2028 MCP that could be locally funded without affected major voter-approved projects;
 - An innovative funding structure for Games MCP legacy projects relying on local programs that would benefit cities in LA County;
 - A technical assistance plan for local cities to expedite completion of Games-priority projects.
- Provisional Project list was approved in September 2025





Metro's Budget Request for 2028 Games

	Project/Program	Fed Funding Request	FY26	FY27	FY28	Grants, Loans, Local/State \$	Recipients
GRN	Games Route Network (GRN)*	\$342.0M	\$9.70	\$63.60	\$268.70	-	Caltrans, Venue Cities
	Paralympic Athlete Transport*	\$50.0M	-	-	\$50.00	-	Metro
GETS	Games Enhanced Transit Service (GETS)	\$1,008.4M	\$30.80	\$349.60	\$628.00	-	Metro, US Transit, Charter
	Light Rail Safety for Venue Support & Accessibility	\$48.9M	\$5.00	\$43.90	-	\$106.30	Metro
	Games-Integrated Transportation Management	\$138.4M	\$9.50	\$128.90	-	-	Metro, Caltrans, LADOT
	Bus Corridor Safety Improvements	\$31.0M	-	\$31.00	-	\$10.00	SGVCOG
	Rail Safety Enhancements to Support Paralympic/Olympics	\$144.0M	\$18.70	\$125.30	-	-	Metro
	Games Transportation Demand Management	\$25.0M	-	\$12.50	\$12.50	-	SCAG
HUBS	Olympic and Paralympic Venue Approach Enhancements	\$107.0M	\$4.00	\$103.00	-	-	Venue Cities
	Key Venue Supporting Stations Safety & Accessibility Enhancements	\$129.5M	\$16.60	\$112.90	-	\$29.90	Metro
	Metro Mobility Hubs	\$0.0M	-	-	-	\$90.70	Metro
Total =		\$2,024.2M	\$94.30	\$970.70	\$959.20	\$236.90	

* IOC contractual requirement

Accessibility Goals

Purpose:

- Ensure all 2028 Games transportation elements are **inclusive and accessible** "For All"
- Leave a **lasting legacy** of accessible transportation for Angelenos with disabilities
- Promote **awareness and societal integration** of universal design and equity across all Games mobility work



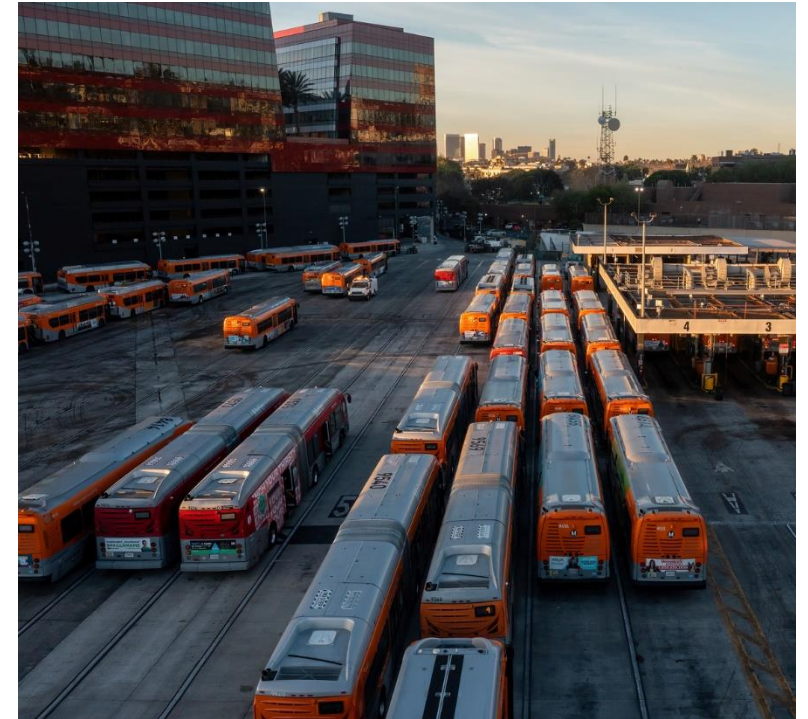
PURPOSE

To provide transit needed to move spectators and workforce to and from Games venues where limited parking and transit capacity exists to accommodate multiple events per day at individual venues.

DESCRIPTION

The GETS consists of the following elements:

- Bus vehicles that are permanently or temporarily procured/borrowed
- Bus malls at venues and Park-and-Ride lots to serve spectators and workforce
- Bus depots to maintain, clean, fuel/charge, and support the operation of the GETS
- Operations team that includes drivers, mechanics, supervisors, schedulers, park & ride site stewards from across the United States



BY THE NUMBERS

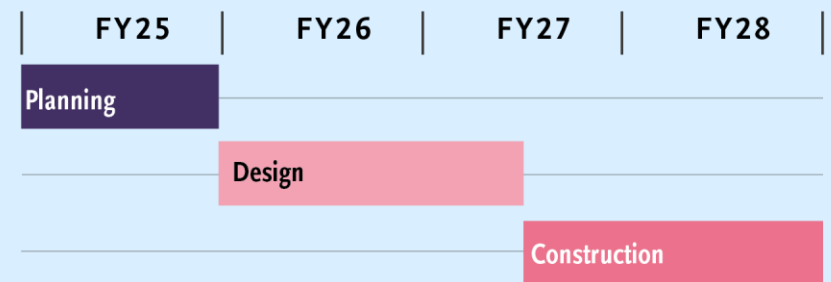


1,748
BUSES



750K
ANTICIPATED PEAK
DAILY SPECTATORS

SCHEDULE



GETS Updates

- Optimized fleet requirements to 1,747 buses, down from 2,700 due to:
 - Replacement venues closer to existing transit
 - Event schedule optimization
 - Revised attendance numbers
- Over half of the required buses have been secured
- Metro will implement World Cup GETS as a foundational step towards the 2028 Games

PURPOSE

A dedicated network of lanes with 2028 Games designation that connect key venues to provide travel time reliability for athletes, officials, media and spectator/workforce buses. The GRN is a contractual obligation to the IOC for the rights to host the 2028 Games.

DESCRIPTION

The GRN will consist of a range of strategies that may include:

- Dedicated Games lanes
- Traffic signal/intersection improvements
- Signage and striping
- Curb space management
- Enhanced response times to incidents, breakdowns, and obstructions
- Retiming of freight and deliveries to nighttime operation
- Street officers and camera enforcement to prevent and enforce unauthorized use



BY THE NUMBERS



210

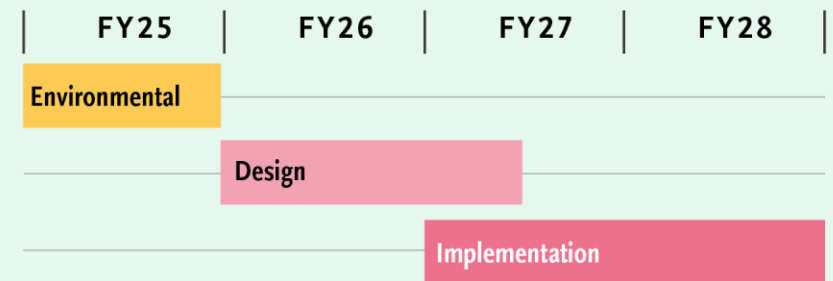
HIGHWAY MILES



100

LOCAL ARTERIAL MILES

SCHEDULE



PURPOSE

Improve access and safety between transit stations/stops and venues to move large numbers of spectators and workforce in and out of venues multiple times a day, and others along corridors that will be intermittently open and closed to vehicle traffic.

DESCRIPTION

Proposed improvements may include the following:

- Pedestrian walkways
- Temporary intersection safety improvement
- Increased shade
- Improved signage/wayfinding
- Temporary bike lanes

Potential locations for these improvements include stations near 2028 Games venues such as Long Beach, Pasadena, Downtown Los Angeles, Sepulveda Basin, Inglewood, and Carson.



BY THE NUMBERS



7

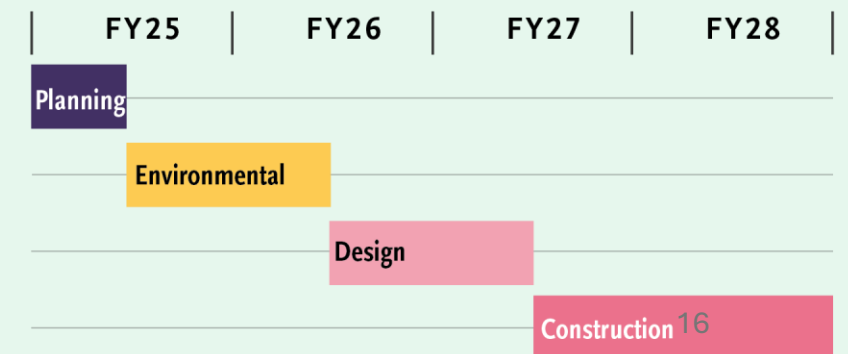
LOCATIONS FOR VENUE APPROACH ENHANCEMENTS



90%

TRANSIT RIDERS WALK, BIKE, OR OTHERWISE ROLL TO AND FROM TRANSIT

SCHEDULE



Mobility Hubs: Projects and Progress

- **RCN**
 - Prepared 30% design and implementation plans
 - Chatsworth (G Line/MetroLink/Amtrak)
 - El Monte (J Line)
 - Expo/Crenshaw (E/K Lines)
 - North Hollywood (B/G Lines)
 - Willow (A Line)
- **MCP Priority Projects**
 - Secured CEQA exemptions, preparing conceptual 15% design plans
 - Harbor Gateway (J Line)
 - Norwalk (C Line)
 - Memorial Park (A Line)



Games Legacy: Mobility Hub Locations

Wayfinding

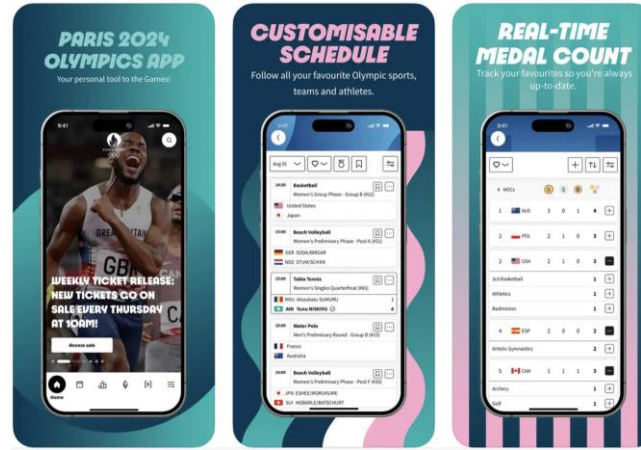
Permanent Signage



Temporary Signage



Digital Wayfinding



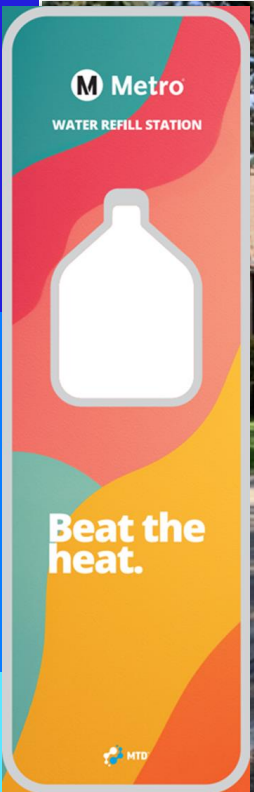
Human Wayfinding



Heat Principles

- Implement heat mitigation strategies grounded in **data and emerging best practices**, while also encouraging creative approaches.
- **Balance temporary and permanent** heat mitigation strategies across venue locations and vulnerable communities to ensure long-term impact.
- Highlight the significance of heat mitigation and accessibility as complementary components of **event planning**.

Moving shade from the exception to the norm



Thank you!

